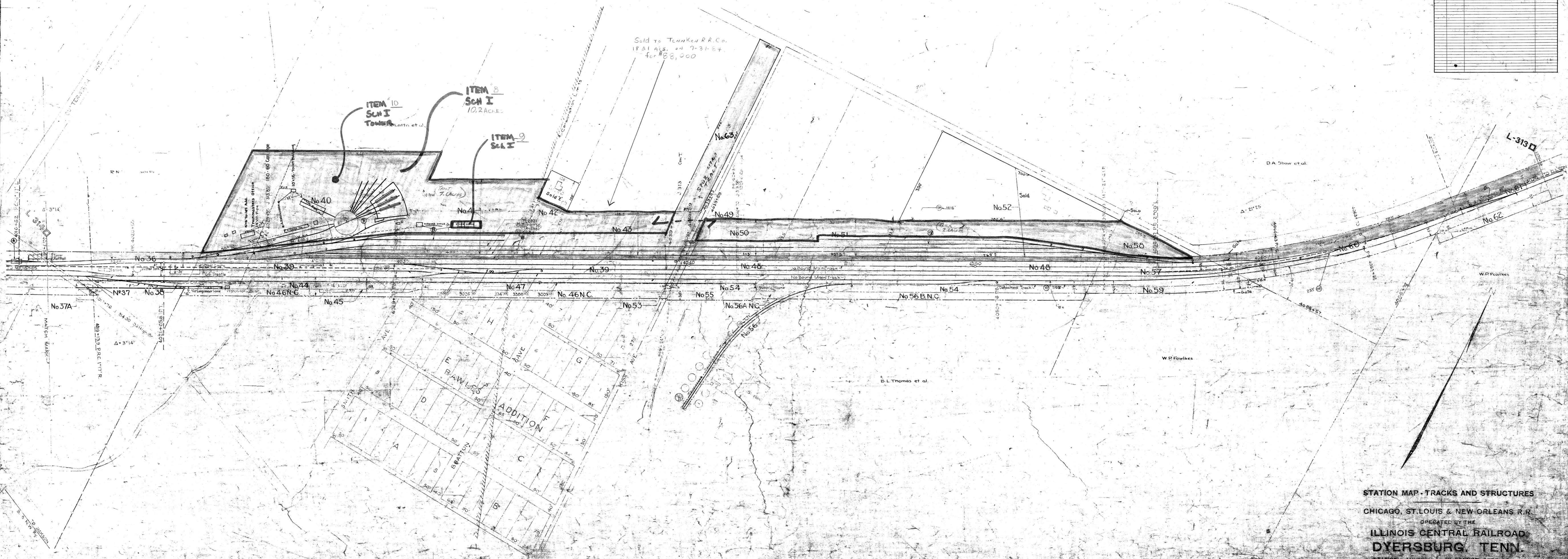


Item No.	Area	Description	Date
1
2
3
4
5
6
7
8
9
10
11
12
13
14
15
16
17
18
19
20
21
22
23
24
25
26
27
28
29
30
31
32
33
34
35
36
37
38
39
40
41
42
43
44
45
46
47
48
49
50
51
52
53
54
55
56
57
58
59
60
61
62
63
64
65
66
67
68
69
70
71
72
73
74
75
76
77
78
79
80
81
82
83
84
85
86
87
88
89
90
91
92
93
94
95
96
97
98
99
100



STATION MAP - TRACKS AND STRUCTURES
 CHICAGO, ST. LOUIS & NEW ORLEANS R.R.
 OPERATED BY THE
 ILLINOIS CENTRAL RAILROAD
 DYERSBURG, TENN.

023-020

Sheet No. 1 of 200
 Date: 1917
 Scale: 1" = 100 FT.
 Office of Chief Engineer
 Chicago, Ill.