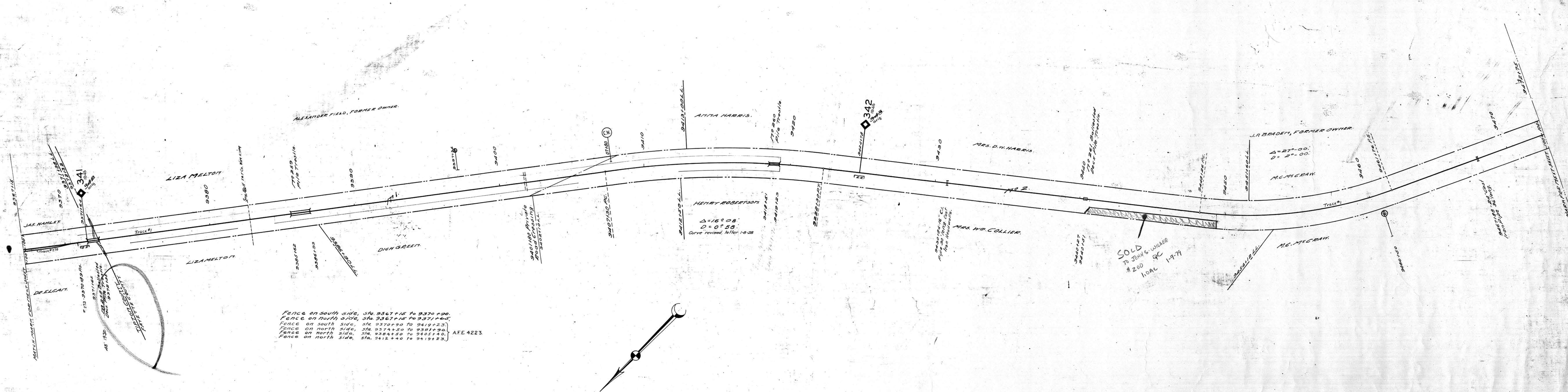


AFE	Date Completed	Description
307	4-5-20	Drainage ditch, Trac. 255 & 260
4223		New Fence miles 342, 343, 344
13356	4-27-20	Replacing 70' C.B.D. Trac. No. 258 with 18" C.B.D. Trac.
40835	8-22-22	Rebuild Br. 260 with Conc. pile trestle



Fence on south side, Sta. 9367+15 to 9370+90.
 Fence on north side, Sta. 9367+15 to 9371+65.
 Fence on south side, Sta. 9370+90 to 9419+23.
 Fence on north side, Sta. 9371+90 to 9381+90.
 Fence on north side, Sta. 9381+90 to 9403+10.
 Fence on north side, Sta. 9412+40 to 9419+23.

Sheet 199 of 111 of Memphis Line from survey station
 9367+15 to survey station 9472+75
 Valuation Engineer

RIGHT OF WAY AND TRACK MAP
 LOUISVILLE AND NASHVILLE R. R. CO.
 MEMPHIS LINE
 STATION 9367+15 TO STATION 9472+75
 SCALE 1 INCH = 200 FT.

024-003

KES
 30