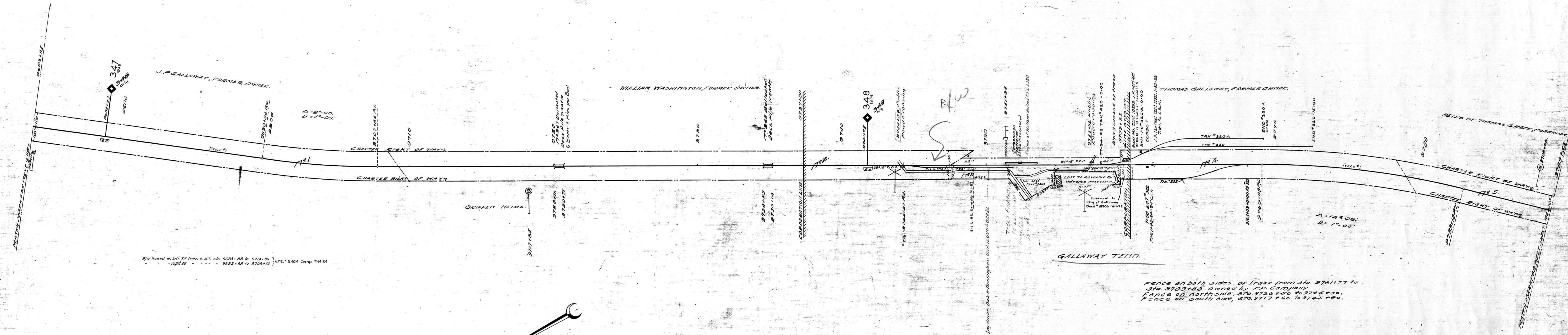


A.F.No.	Date Comp.	Description of Change
5404	5-24	New Office Misc 348 & 349
6380	5-9-25	Ret of part of freight platform.
12811	5-8-29	Ret of stock pens at Galloway.
20510	3-6	Ret of 171
29464	1-12-42	Ret of 1036 Trk # 276
34637	3-19-46	5 End of station retired
3700	2-28-50	Retire Depot and install shelter shed.
44728	12-16-55	Rebuild Br #267
55687	5-2-63	Sale of pt. of Par. 3



Cont. 29748 10-21-37 West Tenn. Power & Light Co. Wire Crossing at 9761+02 Trans. to So. West Tenn. Elec. Mem. Corp. 10-19-39  
 L.F. 34772 " 39208 7-21-51 Banks Brothers 176' Extension to Trk #276 Memo. 8-12-52 Est. 7-1 "276 78"

Sheet 11830 of 111 of Memphis Line from survey station 9683+95 to survey station 9789+55  
 Valuation Engineer.

RIGHT OF WAY AND TRACK MAP  
 LOUISVILLE AND NASHVILLE R. R. CO.  
 MEMPHIS LINE  
 STATION 9683+95 TO STATION 9789+55  
 SCALE 1 INCH = 200 FT.  
 OFFICE OF CHIEF ENGINEER,  
 LOUISVILLE, KY.

024-006

