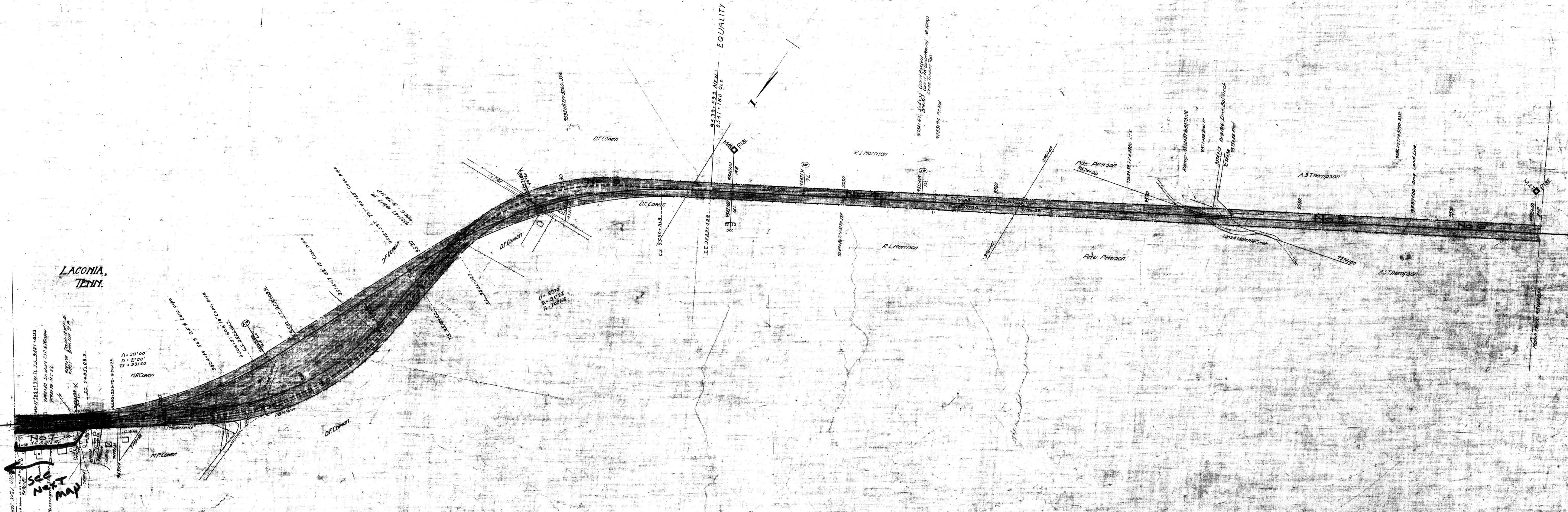


APPENDIX DATE DESCRIPTION  
 6/2/01 8-6-08 Rel. T.R.'s 124 & 125

NO.	GRANTOR	GRANTEE	INSTRUMENT	DATE	RECORD	CURT. NO.	REMARKS	NO.	GRANTOR	GRANTEE	INSTRUMENT	DATE	RECORD	CURT. NO.	REMARKS
1	V.M. West	Tenn. Midland Ry. Co.	Deed	Jan. 22, 1887	DB 29-174-Oct. 11, 1904	205	Note 1	7	J.W. Sanders	N.C. & St. L. Ry.	Deed	Sept. 14, 1904	DB 29-235-Nov. 14, 1904	273	
2	D.F. Conner	Tenn. Midland Ry. Co.	Deed	June 22, 1887	DB 29-131-Oct. 15, 1904	278	Note 1								
3	G.H. Henley	Tennessee Midland Ry. Co.	Deed	June 30, 1887	DB 29-148-Oct. 20, 1904	279A	Note 1								
4	F. B. Henley	Tennessee Midland Ry. Co.	Deed	June 30, 1887	DB 29-145-Oct. 20, 1904	2803	Note 1								
5	Frank Trimble	Tennessee Midland Ry. Co.	Deed	Dec. 24, 1887	DB 29-130-Oct. 20, 1904	285	Note 1								
6	T.K. Hedrick	Tennessee Midland Ry. Co.	Deed	Feb. 1, 1897	DB 29-175-Oct. 24, 1904	282	Note 1								
	C.A. Reichardt	Tennessee Midland Ry. Co.	Deed	Feb. 15, 1937	Office of Secretary	2813	Note 1								

Also see deed 3384 J.W. Phillips to the Louisville & Nashville Railroad Co. dated December 14, 1895, recorded DB 21 page 213.  
 NOTE 1- Deed also grants following rights relative to adjoining lands (1) to cut lines which adjoiners roadway (2) to change course of streams (3) to waste and borrow.



SEE NEXT MAP

RIGHT-OF-WAY AND TRACK MAP  
 LOUISVILLE & NASHVILLE R.R.  
 OPERATED BY THE  
 NASHVILLE, CHATTANOOGA AND ST. LOUIS RY.  
 PADUCAH & MEMPHIS DIV.

STATION 8801+25 TO STATION 8806+25  
 SCALE 1 IN. = 200 FEET  
 JUNE 30, 1915  
 M.P. 1800 to 1620

024-010