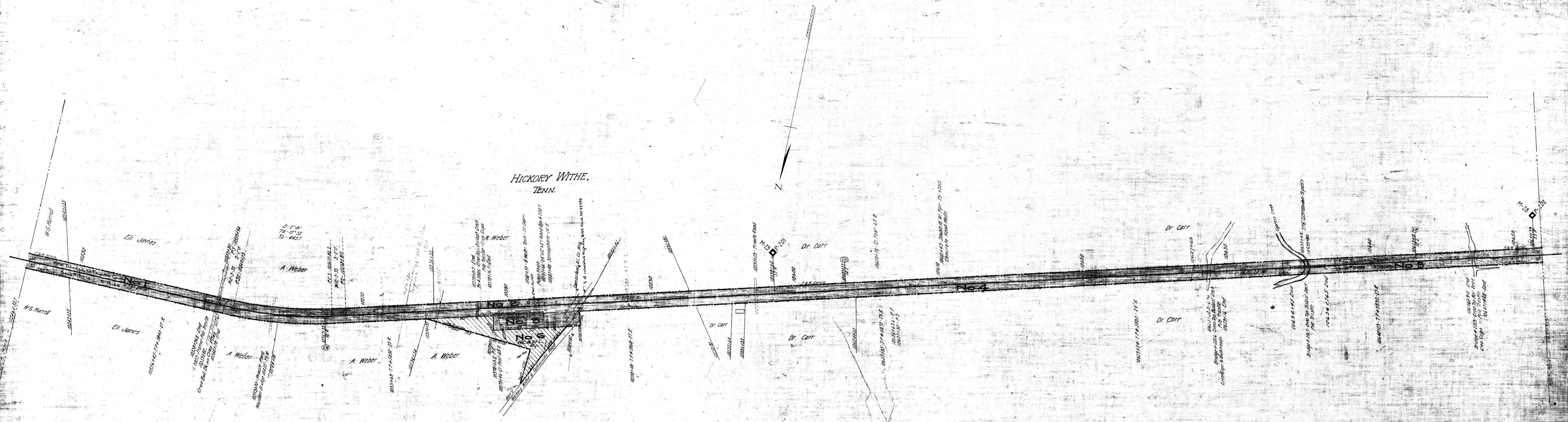


A.F.E. 50676 2-4-59 Ret. Mail Crane
 22300 3-24-60 Sale of pts. Par. 2 & 3
 37998 6-18-65 Ret. Pk. 106 of Pass Shaffer

NO.	GRANTOR	GRANTEE	INSTRUMENT	DATE	RECORD	CUST. NO.	REMARKS
1	L.A. Murrell	Tenn. Midland Ry. Co.	Deed	July 25, 1887	DB 29-163-Oct. 21, 1904	2816	Note 2
2	Ruona Carroll	Tenn. Midland Ry. Co.	Condemnation	Sept. 23, 1887	MB W-17-Circuit Court	2843	
3	Ruona Carroll	Tenn. Midland Ry. Co.	Deed	Aug. 25, 1888	DB 29-1-C-Oct. 18, 1904	2788	
4	J.T. Brewster	Tenn. Midland Ry. Co.	Deed	Feb. 1887	DB 29-129-Oct. 19, 1904	2757	Note 1
5	B.F. Askew	Tenn. Midland Ry. Co.	Deed	Feb. 16, 1887	DB 361-80-Oct. 25, 1904	2937	Note 1-Deed recorded in Shelby Co.
	R.C. Corbett	Tenn. Midland Ry. Co.	Deed	Aug. 6, 1887	DB 361-62-Oct. 19, 1904	2937-A	Note 1-Deed recorded in Shelby Co.

NOTE 1- Deed also grants following rights relative to adjoining lands: (1) to cut timber which endangers roadway (2) to change course of streams (3) to waste and borrow.
 NOTE 2- Deed also grants following rights relative to adjoining lands: (1) to cut timber which endangers roadway (2) to change course of streams.



Cont. 45157 3-5-59 Trunkline Gas Co. 30" gas pipe line X'ing under sta-10575+29 CANC 8/19/68
 40 144 5-25-68 L.A. Keith 24' x 24' Wooden Platform etc. 58465 Under sta- 10575+29 and Water line under track CANC 5-17-68
 72190 3-15-66 Tenn. State Highway Dept. - Relocate Highway 809 where it crosses over 7th

RIGHT-OF-WAY AND TRACK MAP
 LOUISVILLE & NASHVILLE R.R.
 OPERATED BY THE
 NASHVILLE, CHATTANOOGA AND ST. LOUIS RY.
 PADUCAH & MEMPHIS DIV.

STATION 10546+33.7 TO STATION 10651+33.3
 SCALE 1 IN. = 200 FT. JUNE 30, 1916

024-020

Sheet No 77 of 83 Sheets of
 P.C.M. Division from survey
 station 10546+33.7 to survey
 station 10651+33.3
 Surveyor
 Surveyor

M.P. 200.0 to 202.0

FAYETTE CO. TENN.