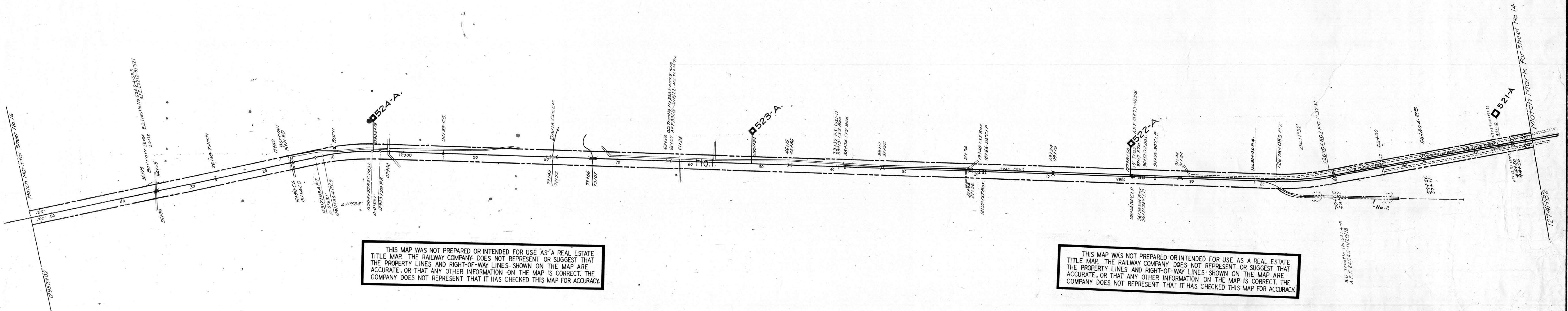
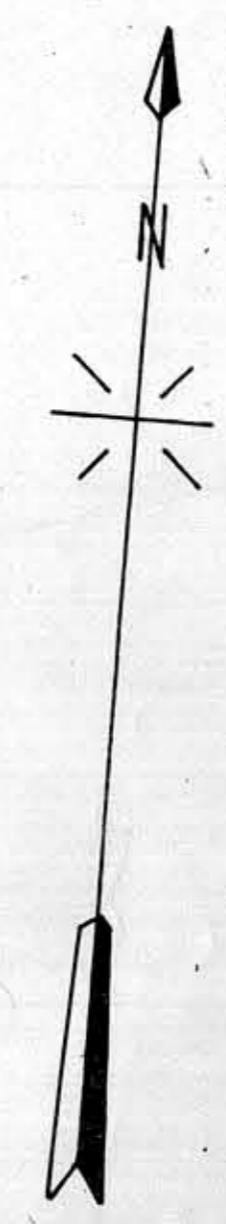


FAYETTE COUNTY, TENN



THIS MAP WAS NOT PREPARED OR INTENDED FOR USE AS A REAL ESTATE TITLE MAP. THE RAILWAY COMPANY DOES NOT REPRESENT OR SUGGEST THAT THE PROPERTY LINES AND RIGHT-OF-WAY LINES SHOWN ON THE MAP ARE ACCURATE, OR THAT ANY OTHER INFORMATION ON THE MAP IS CORRECT. THE COMPANY DOES NOT REPRESENT THAT IT HAS CHECKED THIS MAP FOR ACCURACY.

THIS MAP WAS NOT PREPARED OR INTENDED FOR USE AS A REAL ESTATE TITLE MAP. THE RAILWAY COMPANY DOES NOT REPRESENT OR SUGGEST THAT THE PROPERTY LINES AND RIGHT-OF-WAY LINES SHOWN ON THE MAP ARE ACCURATE, OR THAT ANY OTHER INFORMATION ON THE MAP IS CORRECT. THE COMPANY DOES NOT REPRESENT THAT IT HAS CHECKED THIS MAP FOR ACCURACY.



TRACK NOS REFER TO ICC LIST NOS

RIGHT-OF-WAY AND TRACK MAP

SOUTHERN RAILWAY COMPANY

Operated by the

SOUTHERN RAILWAY COMPANY

MEMPHIS DIVISION

STATION 12741 + 82 TO STATION 12953 + 02

SCALE: 1 IN. = 400 FT. DECEMBER 31, 1927.

Office of Special Engineer
Washington, D.C.

STATIONING REFERS TO ICC INVENTORY CHAINAGE—1916

024-027

V-81
15

Tracks corrected to Dec. 31, 1927