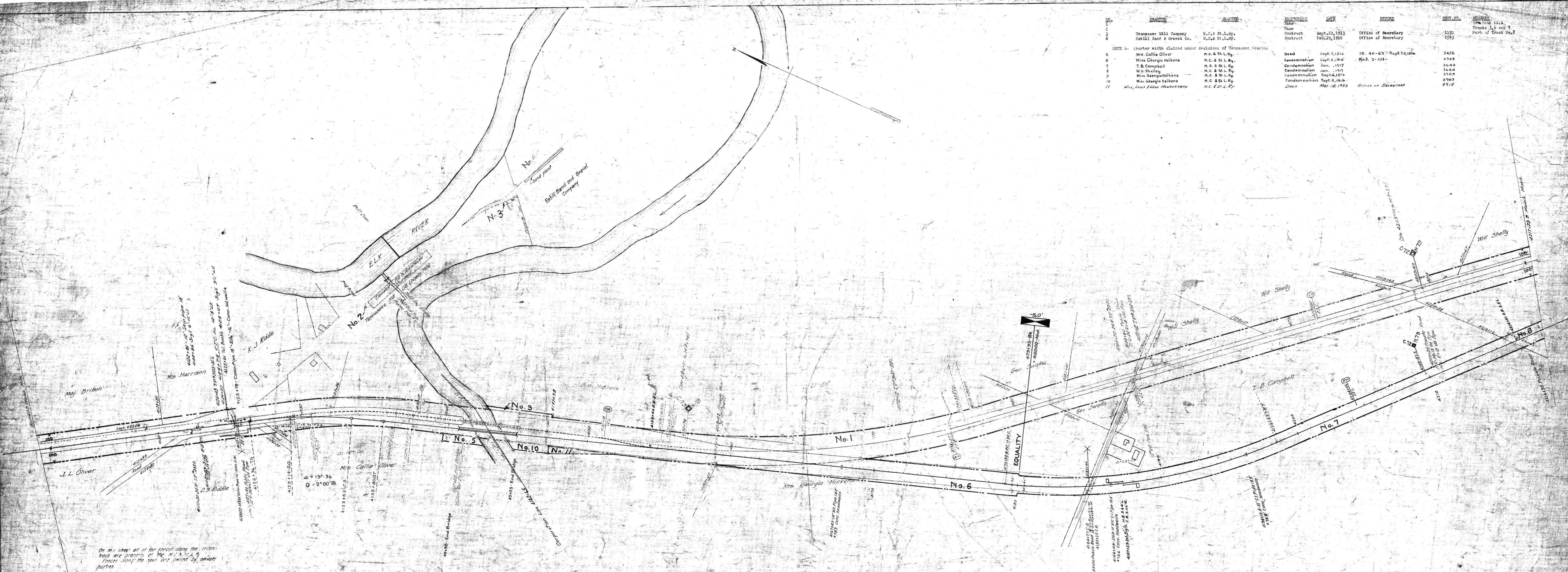


NO.	GRANTOR	GRANTEE	INSTRUMENT	DATE	RECORD	CURT. NO.	REMARKS
1			None				
2	Tennessee Mill Company	N.C. & St. L. Ry.	Contract	Sept. 22, 1913	Office of Secretary	1190	Tracks 5, 6 and 7
3	Estill Sand & Gravel Co.	N.C. & St. L. Ry.	Contract	Feb. 25, 1916	Office of Secretary	1593	Part of Track No. 6
NOTE 1- Charter with closed under decisions of Tennessee Courts.							
5	Mrs. Callie Oliver	N.C. & St. L. Ry.	Deed	Sept. 5, 1916	DE. 46-03-Sept. 20, 1916	3456	
6	Miss Georgia Heikens	N.C. & St. L. Ry.	Condemnation	Sept. 5, 1916	Ma.B. 3-188-	3703	
7	T. B. Campbell	N.C. & St. L. Ry.	Condemnation	Jan. 1, 1917		3643	
8	Will Shelly	N.C. & St. L. Ry.	Condemnation	Jan. 1, 1917		3644	
9	Miss Georgia Heikens	N.C. & St. L. Ry.	Condemnation	Sept. 5, 1916		3703	
10	Miss Georgia Heikens	N.C. & St. L. Ry.	Condemnation	Sept. 5, 1916		3703	
11	Will Louis Leen Hawksmith	N.C. & St. L. Ry.	Deed	May 18, 1955	Office of Secretary	4912	



On this sheet all of the parcels along the main track are shown as the N.C. & St. L. Ry. parcels along the spur are owned by private parties.

Cont. 45506 7-17-59 Town of Estill Springs - 3/4" Water Line 42' from E.M.T. Sta. 4109+35 to 4124+92

026-004

RIGHT-OF-WAY AND TRACK MAP
NASHVILLE, CHATTANOOGA AND ST. LOUIS RY.
CHATTANOOGA DIVISION
 STATION 4111+60.9 TO STATION 4217+23.9
 SCALE: 1 IN. = 200 FT. **JUNE 30, 1916**
 OFFICE OF CHIEF ENGINEER
 NASHVILLE, TENN.
 M.P. 772 to 792