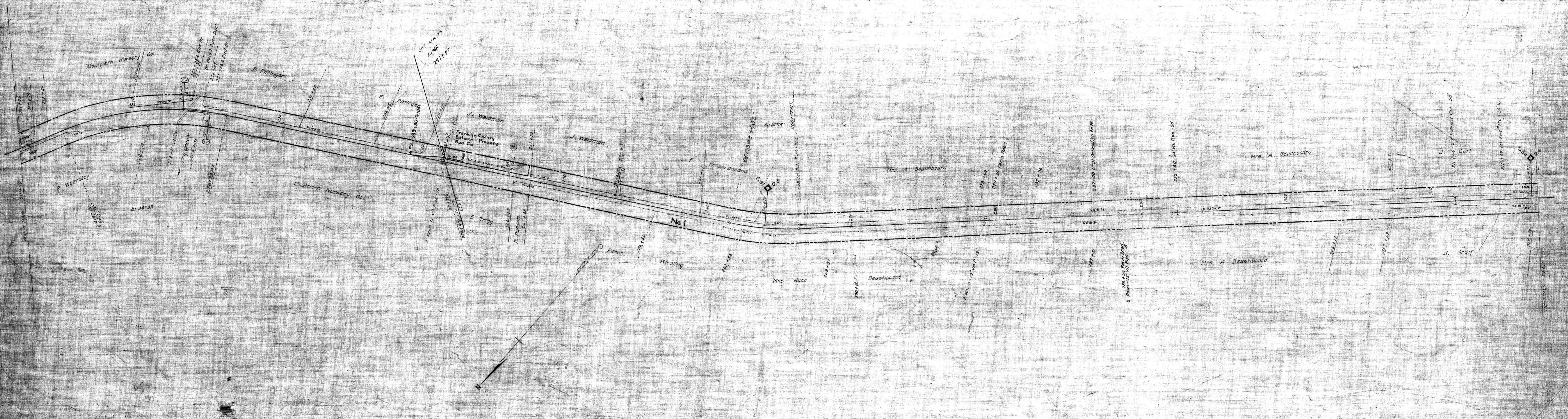


NOTE 1- Charter with claimed under decisions of Tennessee Courts.



RIGHT-OF-WAY AND TRACK MAP
 NASHVILLE, CHATTANOOGA AND ST. LOUIS RY.
 COLUMBIA BRANCH

STATION 211+70 TO STATION 317+30
 SCALE: 1 IN. = 200 FT. JUNE 30, 1916

Sheet No. 2 of 47 Sheets of
 Columbia Branch from Station
 Station 211+70 to Station 317+30
 37x59

OFFICE OF CHIEF ENGINEER
 NASHVILLE, TENN.

M.P. 40 to 60

026-22