

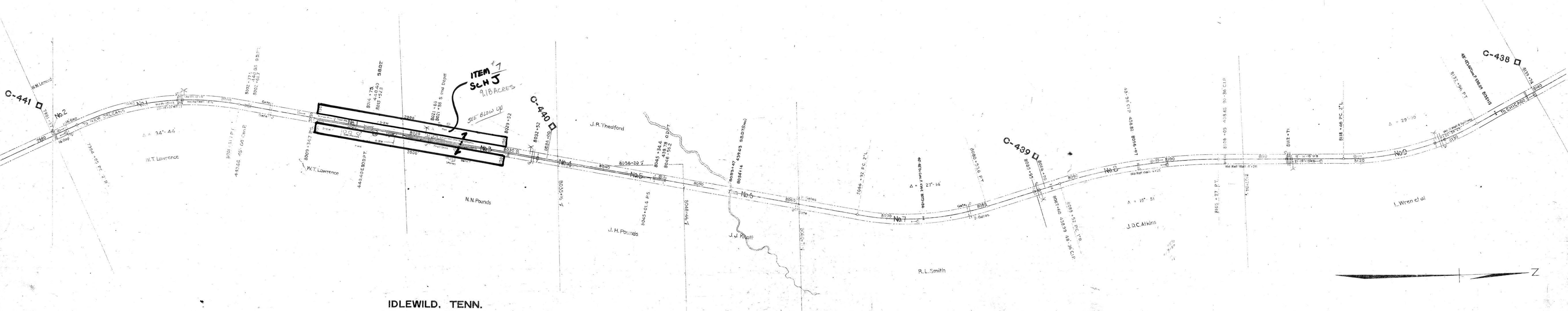
No.	Grantor	Grantee	Instr.	Date	Record	Cont. No.	Remarks
1	J. T. Lawrence	Miss. Cant. R. R. Co.	W. D.	4-6-73	5-235	8-12-74	74
2	W. M. Leonard	"	"	4-6-73	5-241	8-12-74	19
3	N. N. Pounds	"	"	4-6-73	5-242	8-12-74	75
4	J. R. Theford	"	"	4-6-73	5-244	8-12-74	18
5	J. P. Pounds	"	"	4-6-73	5-244	8-12-74	17
6	J. J. Knoff	"	"	4-6-73	5-244	8-12-74	16
7	R. L. Smith	"	"	4-6-73	5-244	8-12-74	15
8	J. D. C. Atkins	"	"	4-6-73	5-244	8-12-74	14
9	L. Wren, et al	"	"	4-6-73	5-244	8-12-74	13

Fence Notes
R. of W. on West

7981 + 27	to	7995 + 02	5 B.W.
7995 + 43	to	8009 + 52	
8033 + 12	to	8045 + 16	
8045 + 42	to	8048 + 15	
8048 + 75	to	8050 + 18	3-EW 8.20' W.W.
8060 + 50	to	8085 + 75	5 B.W.
8085 + 28	to	8112 + 50	3 B.W. 8.26' W.W.
8112 + 53	to	8128 + 07	
8129 + 16	to	8134 + 56	
8135 + 40	to	8139 + 74	

R. of W. on East

7981 + 27	to	7995 + 02	5 B.W.
7995 + 43	to	8009 + 52	
8012 + 39	to	8014 + 45	5 B.W. 8.32' W.W.
8014 + 45	to	8017 + 36	4 B.W.
8033 + 12	to	8036 + 20	8-B.W.
8036 + 20	to	8045 + 48	5 B.W. 8.32' W.W.
8046 + 42	to	8085 + 75	3 B.W.
8085 + 28	to	8112 + 50	
8112 + 53	to	8128 + 07	
8129 + 16	to	8134 + 56	
8135 + 40	to	8139 + 74	



INDEX NO.	WORK MONTH	DESCRIPTION	DATE COMPLETED
1	1922
2	1922
3	1922
4	1922
5	1922
6	1922
7	1922
8	1922
9	1922
10	1922
11	1922
12	1922
13	1922
14	1922
15	1922
16	1922
17	1922
18	1922
19	1922
20	1922

027-17

Sheet No. 022 of valuation section I-Tenn. 12 Jackson to Tenn. State line of the Illinois Central Railroad Company, from survey station 6457+84 to survey station 9613+10

W. M. Leonard
Valuation Engineer

RIGHT-OF-WAY AND TRACK MAP
CHICAGO, ST. LOUIS & NEW ORLEANS R.R.
OPERATED BY THE
ILLINOIS CENTRAL RAILROAD
JACKSON TO TENN.-KY. STATE LINE

STATION 7981+27 TO STATION 8139+74
M. P. C-441 TO M. P. C-438
SCALE: 1 IN. = 300 FT. JUNE 30, 1915
OFFICE OF CHIEF ENGINEER. Rev. Dec. 31, 1927
CHICAGO, ILL.