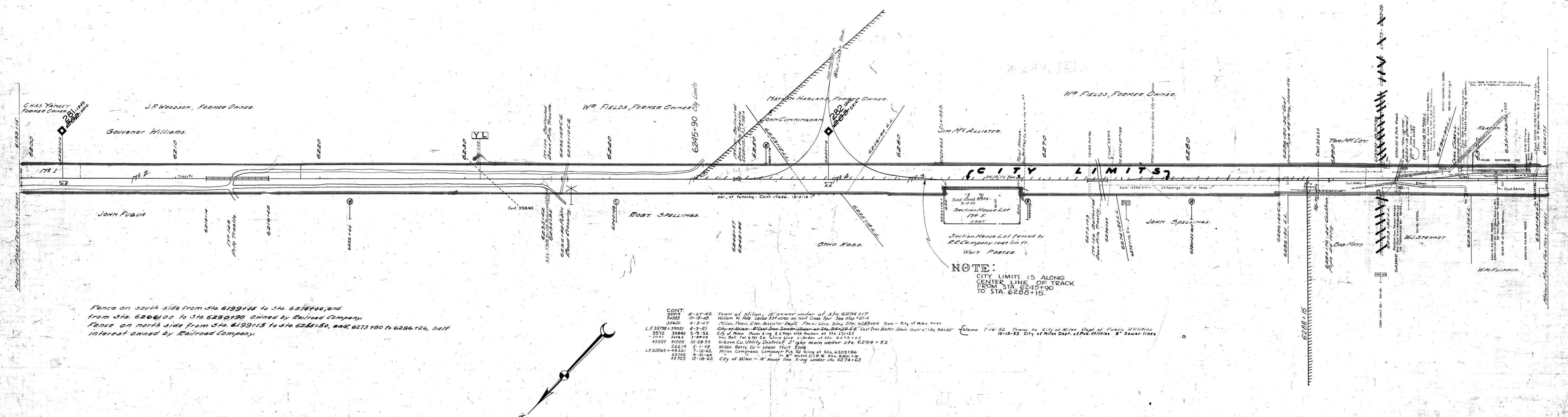


A.F.E. No.	Date Completed	Description of Change
3373	3-21-23	Removal of track #123
4371	3-27-23	Rebuilding sec. foreman's house sta. 62+00
5968	5-24-24	Brick Fill/Ret.
9068	6-6-28	Reconstruct of Br. 151
27550	4-1-41	Const. Trk. 180+00 to 180+30. See Map 60-A.
31044	7-15-42	Re of Tr. #188 Newhead to 6275+37
31470	8-19-43	Const. of water line to section house at sta. 60+70.
31523	9-15-43	"One mile to water to 100+00 near."
41952	6-26-53	Reb. bridge #119 with 6 pile post and deck ties.
43938	8-25-53	Retire Section House Sta. 6289+20
46473	9-29-55	Ret. 3 section houses and lot Sta. 6263+09.7 to 6268+32.4.



Fence on south side from Sta. 6199+15 to Sta. 6214+00, and from Sta. 6266+00 to Sta. 6290+90 Owned by Railroad Company.
 Fence on north side from Sta. 6199+15 to Sta. 6255+50, and 6273+80 to 6286+26, half interest owned by Railroad Company.

CONT.	Date	Description
39019	5-27-42	Town of Milan, 18" sewer under at Sta. 6274+17
34333	10-19-45	William W. Hale Lease 331' 00" on Wolf Creek Spur. See Map 160-A
35420	4-3-47	Milan, Tenn. Elec. & Water Dept. Power Line Xing Sta. 6289+04 Trm - City of Milan 4+47
L.F. 35798 + 39057	4-3-51	City of Milan - East Iron Sewer under at Sta. 6242+68 East Iron Water Main Under at Sta. 94+35
3972	5-3-52	City of Milan - Run King & 2 Poles With Brackets at Sta. 251+42
3717	7-24-53	Sta. Bell Tel. & Tel. Co. Wire Line X. Under at Sta. 6292+23
42037	10-28-53	Gibson Co. Utility District 2" gas main under Sta. 6294+52
26614	5-1-58	Milan Berry Co. - Lease Fruit Spans
L.F. 20065 + 48261	7-12-62	Milan Compress Company's Pat. Ed. Xing at Sta. 6303+86
23755	9-21-62	City of Milan - 8" Water C.P. @ Sta. 6301+31
48703	12-18-62	City of Milan - 18" sewer line Xing under Sta. 6274+62

NOTE:
 CITY LIMITS IS ALONG CENTER LINE OF TRACK FROM STA. 6245+90 TO STA. 6288+15.

Sheet 112.60 of 111 of Memphis line from survey station 6199+15 to survey station 6304+75
 Valuation Engineer

RIGHT OF WAY AND TRACK MAP
 LOUISVILLE AND NASHVILLE R.R. CO.
 MEMPHIS LINE
 STATION 6199+15 TO STATION 6304+75
 SCALE 1 INCH = 200 FT.

