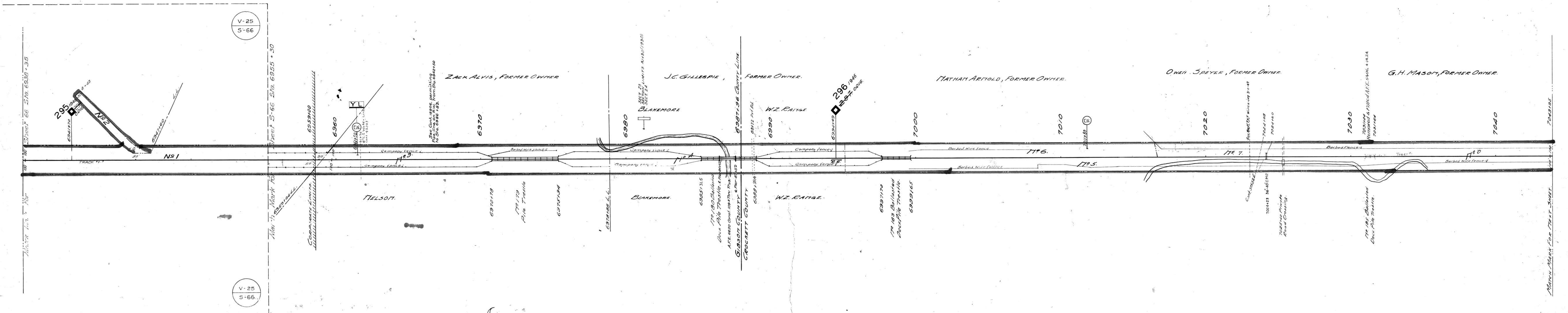


A.F.E. No.	Date Completed	Description of Change
6268	11-16-25	Ext. Track #226
6320	7-20-27	Cont. of 10th & 7th. Under #180
6406	8-27-34	Fill in bridge No. 185
31225	8-15-43	Overhaul for water to right of way
	8-22-54	Bridge #184 filled and replaced by 36-40 C.R.
44726	5-17-57	Rebuild Bridge #180



Fence Data
 R/W fenced on right
 Sta 943 +55 to 985 +23
 988 +97 to 015 +00
 019 +30 to 043 +30
 R/W fenced on left
 Sta 947 +25 to 985 +23
 988 +97 to 015 +00
 019 +30 to 043 +30

L.F. 31676 Cont. 37533 6-28-49 Gibson Co. Elec. Membership Corp. Wire x-ing at Sta. 7023+67
 43203 11-9-56 CITY OF HUMBOLDT - 24 C.I. WATER LINE 1/4 MI. AT STA. 6961+70

Sheet 1967 of 111 of Memphis Line from survey station
 6938+35 to survey station 7043+95
 Valuation Engineer

RIGHT OF WAY AND TRACK MAP
 LOUISVILLE AND NASHVILLE R. R. CO.
 MEMPHIS LINE
 STATION 6938+35 TO STATION 7043+95

SCALE 1 INCH = 200 FT.
 OFFICE OF CHIEF ENGINEER
 LOUISVILLE, KY.