

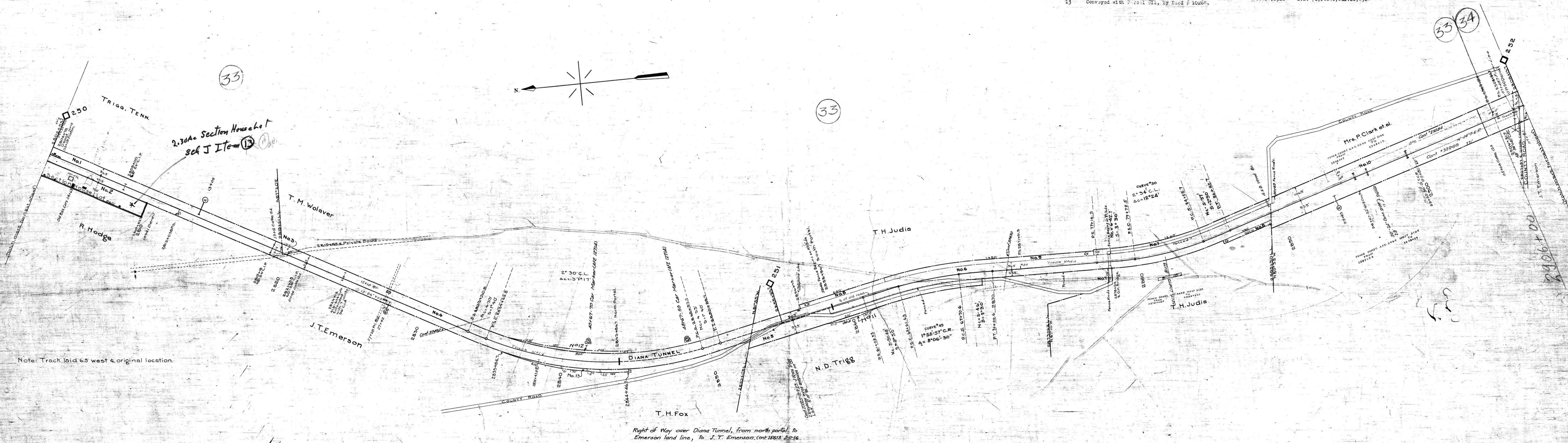
A.F.E. No.	Date Completed	Description of Change
6659	4-5-26	Converting railroad set laborers house into new one.
7814	8-24-26	Dist. for 30' wide One Acre 30x 290x 31.7
12714	12-20-29	Inst. of Train Length Markers V.S. 16.
1403	11-9-29	Construction of fence Waide Sta. 2878+00 to 2881+00
2260	11-9-29	Construction of fence Waide Sta. 2881+00 to 2884+00 Sta. E. Side 2884+00 to 2887+00
14046	8-29-30	Inst. of Sanitary Toilets
16349	8-17-33	Riprap along surface ditch see minor Job 170
17107	9-25-33	Inst. of 2 lines Cone pipe 12" 1-30 81-28 at 2896+60
17362	9-25-33	41' of Trk " 13 Ret. incl. No turn out.
19229	8-15-35	Ret. of Trk " 46, 3800' of 44, 235' of 45 and 97' of Trk " 47 and transg the rem. 96' to " 44
28047	2-11-39	Ret. 3 Rock Piers
28395	10-11-41	Ret. 814' of Trk " 43 Turnout incl.
28398		Ret. 2 Section House on No. 42

Minor Job # 171 3-9-33 At Station 289150 4' x 2 frame Br. Under pub. Road replaces 18' x 24' 8' x 20' 30' V.C.P.
170 2-17-33 Rip rap along surface ditch Station 2878102 Sec. 416949

No.	Grantor	Grantee	Instrument	Date	Record	Cust. No.	Remarks
1	H. W. Hodge	L. & N. R. Co.	Deed	Aug. 5, 1911	D.B. 69 P. 415	10266(1)	
2	"	"	"	Aug. 11, 1911	D.B. 72 P. 341	10266(2)	
3	"	"	"	Jun. 12, 1911	D.B. 69 P. 347	10267	
4	J. T. Emerson	"	"	May 18, 1911	D.B. 69 P. 303	10268(1)	One-half interest
5	J. T. Emerson	"	"	Dec. 17, 1911	D.B. 70 P. 555	10268(2)	"
6	N. D. Trigg	"	"	Oct. 11, 1911	D.B. 69 P. 556	10269	"
7	T. H. Judia	"	"	May 18, 1911	D.B. 69 P. 309	10270(1)	"
8	"	"	"	Jan. 10, 1912	D.B. 70 P. 152	10270(2)	"
9	"	"	"	Aug. 3, 1912	D.B. 72 P. 529	10270(3)	"
10	Mrs. P. Clark et al	L. & N. R. Co.	"	Feb. 25, 1913	D.B. 72 P. 422	10271	See Note No. 1
11	N. D. Trigg	"	"	Oct. 25, 1911	D.B. 70 P. 40	10271	"
12	"	"	"	Jan. 4, 1916	" " 76 " 72	Apr. 19, 1916	"

#1 - R.R. Co. contracted to construct grade crossing - Cust. No. 14669

12 J. T. Emerson L. & N. R. Co. Deed Feb. 14, 1916 D.B. 76 P. 240, Jul. 20, 1916
13 Conveyed with Parcel 112, by Deed # 10266



Cont. 28424 1-29-39 C. Vance Park Use of R/W from 58.5' left of 289416.37 to point 68.5' over at 2908113.7 all land left there of Trans. to Mrs. Dave Red 129-40
28782 5-5-39 Duck River Elec. Mem. Corp. Power Crossing Sta. 2907+00
28952 1-28-40 Mrs. Dave Red Holly lease on part of par. 10; Trans. - Dan Lewis 3-3-42; 2-10-47 Trans. to J. F. Stevens
33060 6-10-42 H.C. Sigmon Lease of pt. of par. 10-366 right of 6' 6' wide 2891+00 to 2902+51 Trans. J. D. Coffman & D. Wolaver 5-13-38 Cont. 4; Cont. 249-60
31676 37430 6-28-49 Duck River Elect. Membership Corp. Power Line x-ing at Sta. 2870+927
31676 37432 6-21-49 28324+57.7
38387 31366 2-19-60 Douglas Wolaver - LEASE of 60' x 771' STRIP of R/W FROM STA. 2899+80 to 2901+51

Right of Way over Diana Tunnel, from north portal, to Emerson land line, to J. T. Emerson, cont. 15813 241-16

Sheet No. 28 of 42 of Lewisburg Division from survey station 2802+53.7
to survey station 2908+13.7

Valuation Engineer

RIGHT OF WAY AND TRACK MAP
LOUISVILLE AND NASHVILLE R. R. CO.
LEWISBURG DIVISION
STATION 2802+53.7 TO STATION 2908+13.7
SCALE: 1 INCH = 200 FT. JUNE 30 1917.

028-02