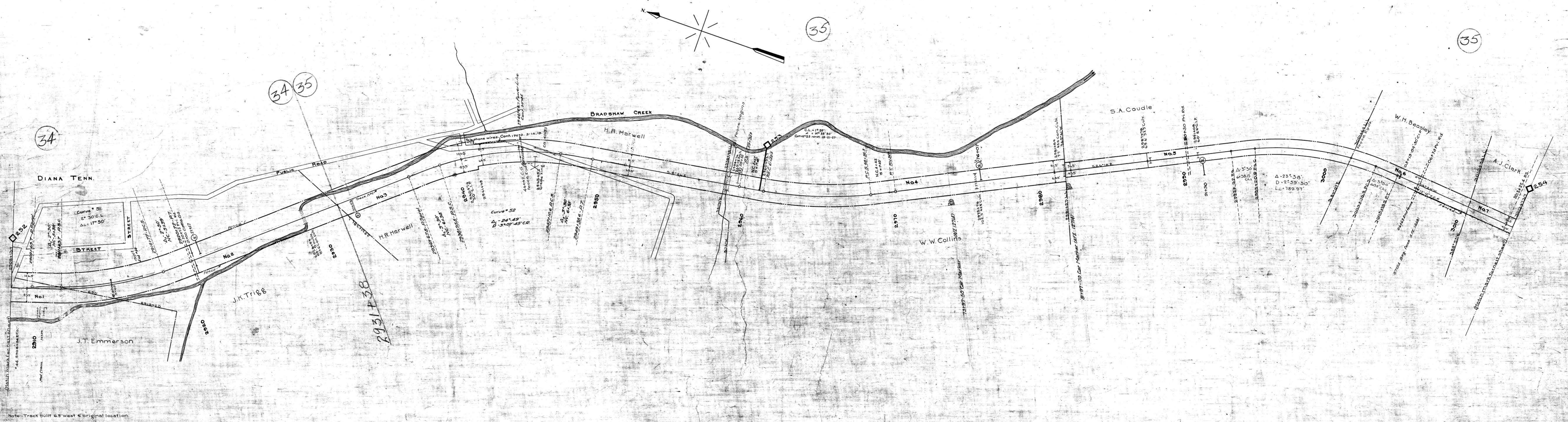


A.F.E. No.	Date Comp.	Desc. of Change
3376	11-24-22	Fence East 345+47 to G.S. 246+00 Ret. 1/2" 345+100 to 355+400
12714	12-20-29	Loc. of Train Length Markers V.G. 16.
12558	2-23-24	2 1/4" radius curve 1/2" 3007151 to 3028140
4333	2-23-24	LETTERING TRACKSIDE SIGNS
14046	6-29-30	Inst. of Lam. Towers
19280	8-12-35	Ret. of Trk. 46 and 3900' of 44, 235' of 45 and 77' of 47 und trans. the rem. 96' to 44
20523	5-17-35	Set Track Pins
29555	4-2	Ret. 108 to 46
21331	3-11-41	Ret. Depot f. Misc. Bldg.
42532	8-9-52	Ret. Trk. # 44 to 516, 2917-21.2 and all of # 45

No.	Grantor	Grantee	Instrument	Date	Record	Cont. No.	Remarks
1	J.J. Emerson	L.S. No. R.R. Co.	Deed	May 19, 1911	D.B. 69 P. 368	Jun. 14, 1911	10268(1)
2	J.J. Emerson	"	"	Dec. 13, 1911	D.B. 70 P. 56	Dec. 14, 1911	10268(2)
3	J.J. Trigg	"	"	Jul. 17, 1911	D.B. 69 P. 555	Oct. 14, 1911	10272(1)
4	H.R. Harwell	"	"	Feb. 24, 1912	D.B. 70 P. 292	Mar. 6, 1912	10273
5	S.A. Caudle	"	"	May 18, 1911	D.B. 69 P. 301	Jun. 14, 1911	10274
6	W.H. Beasley	"	"	May 17, 1911	D.B. 69 P. 301	Jun. 14, 1911	10275
7	A.J. Clark	"	"	May 20, 1911	D.B. 69 P. 306	Jun. 14, 1911	10276
				May 17, 1911	D.B. 69 P. 306	Jun. 14, 1911	10276(1)



Sheet No. 29 of 42 of Lewisburg Division from survey station 2908+13.7 to survey station 3013+73.7

Valuation Engineer

028-03

RIGHT OF WAY AND TRACK MAP
LOUISVILLE AND NASHVILLE R. R. CO.
LEWISBURG DIVISION
 STATION 2908+13.7 TO STATION 3013+73.7
 SCALE: 1 INCH = 200 FT. JUNE 30 1917.
 OFFICE OF CHIEF ENGINEER
 LOUISVILLE, KY.