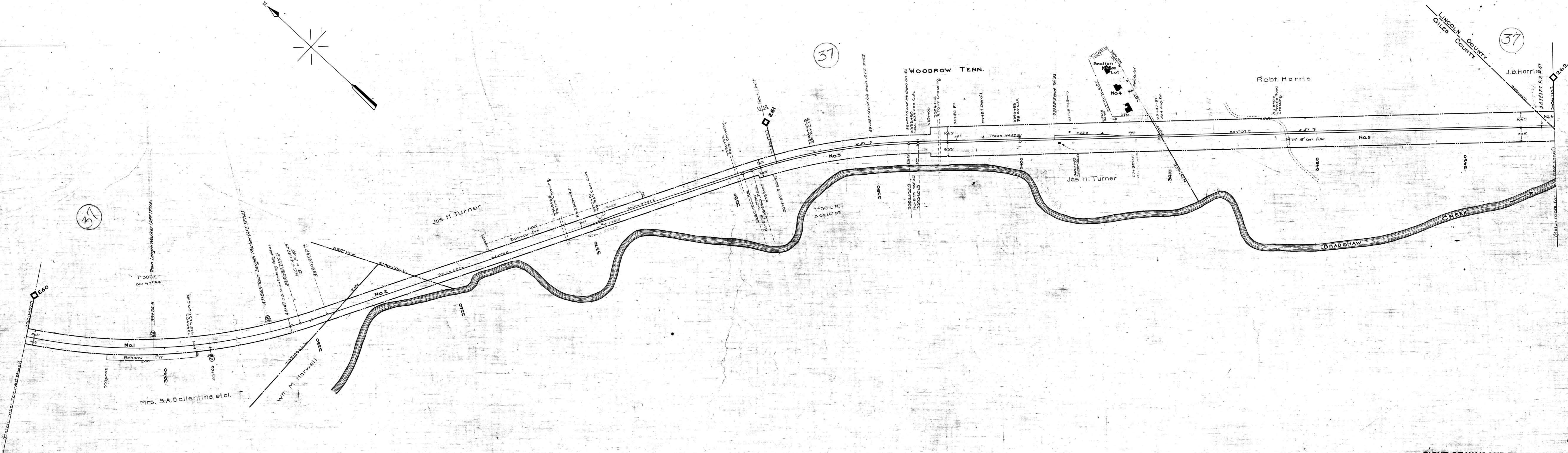
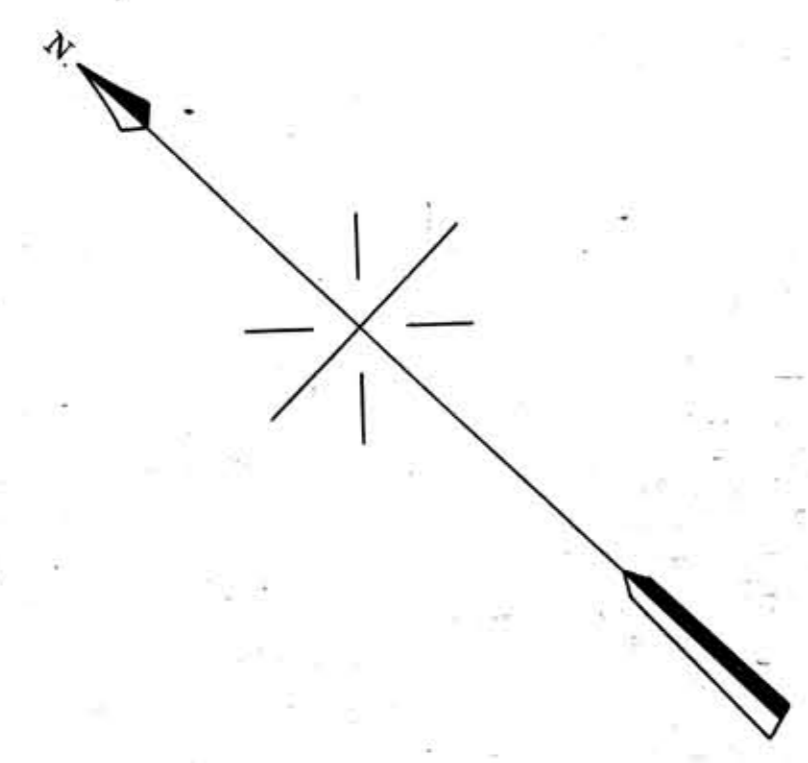


A.F.E. No.	Date Comp.	Date of Change
3967	2-23-11	Force East 100'06 to 118'21-81' High 100'06
9762	10-27-27	Inst. of the drain on Rt. 118, 3803 103'7" to divide 12' apart
12712	12-20-29	Inst. of Train Length Markers 1/8" 1/8"
14546	12-23-30	Inst. of "CROSSING" TOWER AT SECTION HOUSE
15573	9-25-32	Inst. of 61.5' of the 42' incl. to turnout
21519	11-27-36	Sold par. 4
22171	9-27-38	South P.S. # 51 moved No. from 34291667 to 3435127

No.	Grantor	Grantee	Instrument	Date	Record	Cont. No.	Remarks
1	Mrs. S.A. Ballentine et al	L.M. McRae et al	Condemnation	May 23, 1913	D.B. 71 P. 628	10295(1)	See Note No. 1
2	W.M. Harwell	"	Deed	May 18, 1911	D.B. 69 P. 215	10294	
3	J.H. Turner	"	"	May 20, 1911	D.B. 69 P. 296	10295(1)	See Note No. 2
4	J.H. Turner	"	"	Sep. 20, 1914	D.B. 73 P. 481	10295(4)	
5	Robt. Harris	"	"	Aug. 5, 1911	D.B. 62 P. 468	10296	
6	J.B. Harris	"	"	May 25, 1911	D.B.W.W. P. 538	10297	

Notes:
 #1 - See Deed No. 10295(2) from J.P. Hot, Circuit Court Clerk, conveying remaining interest
 Borrow privileges from Mrs. S.A. Ballentine, April 26, 1912 - Contract No. 14735
 #2 - J.H. Turner, June 17, 1912 - Contract No. 14736 - Release from damages caused by removal of barn Jun. 14, 1912 Deed #10295(2)
 Release from damages caused by construction of railroad - March 6, 1914 - Deed No. 10295(3)



Note: Track laid 65' west of original location.

Sheet #1033 of 42 of Lewisburg Division from survey station 3330+53.7
 to survey station 3436+13.7
 Valuation Engineer

028-07

RIGHT OF WAY AND TRACK MAP
LOUISVILLE AND NASHVILLE R. R. CO.
LEWISBURG DIVISION
 STATION 3330+53.7 TO STATION 3436+13.7
 SCALE: 1 INCH = 200 FT. JUNE 30 1917.

OFFICE OF CHIEF ENGINEER
 LOUISVILLE, KY.

V.16
 33