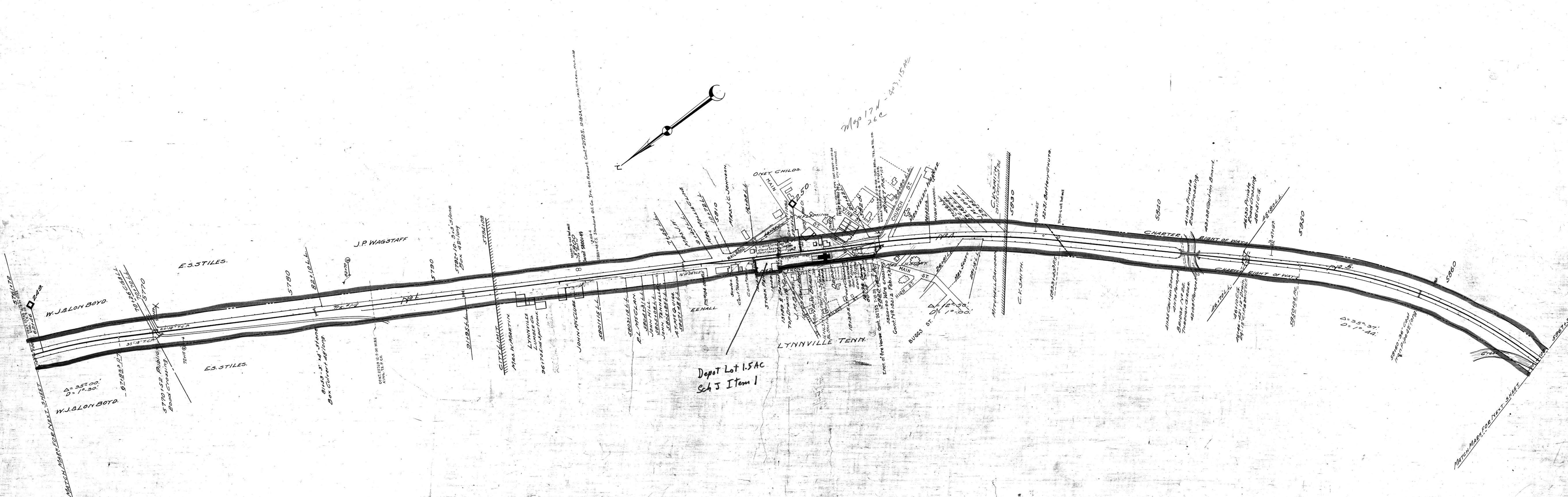


A.F.E. No Date Completed Description of Change

|       |          |   |
|-------|----------|---|
| 7700  | 6-8-24   | Extending Platform & Building Shed at Station       |
| 3246  | 6-19-23  | Inst. of Warning Sign at Station                    |
| 5213  | 8-31-24  | Inst. of Electric Lights in this Station            |
| 14045 | 8-29-30  | Inst. of Sanitary Toilets & Shower                  |
| 15877 | 2-1-29   | Timber Dock   |
| 5069  | 5-22-32  | Ret. of Coal House                                  |
| 21759 | 3-19-36  | Ret. of T.L. 104A                                   |
| 26446 | 5-3-32   | Ret. of 160' of T.L. 104, 3 Mail Crane              |
| 35240 | 7-18-46  | Ret. Stock Pens                                     |
| 38912 | 11-14-49 | Ext. Trk #104 164.5' new T.O. Trk #104 Sta. 48+49.5 |



Map 17 N - 403, 15 AC  
26C

Cont 25764 225-32 Ten Elec Power Co. Xing at Sta 5820+32 & on R.O.W. of M.R. 280, Canceled  
 81651 5-18-40 City of Pulaski Power Line Xing Jct. 5820+32 & Power Line on R.O.W. Supercedes Cont 23786  
 32813 3-9-42 Duon R. Elec Membership Corp. Power line over at sta. 84+83.  
 36994 11-24-48 Road of Rogers & Co. Inc. Asphalt Storage Tank Capacity 30,000 Gals on R.O.W. Sta. 5815+42 (Cancelled)  
 36994 11-24-48 Road of Rogers & Co. Inc. Asphalt Storage Tank Capacity 30,000 Gals on R.O.W. Sta. 5815+42 (Cancelled)  
 36994 11-24-48 Road of Rogers & Co. Inc. Asphalt Storage Tank Capacity 30,000 Gals on R.O.W. Sta. 5815+42 (Cancelled)  
 36994 11-24-48 Road of Rogers & Co. Inc. Asphalt Storage Tank Capacity 30,000 Gals on R.O.W. Sta. 5815+42 (Cancelled)

SHEET NO. 31 OF 52 OF NASHVILLE AND DECATUR DIVISION FROM SURVEY  
 STATION 5761+72 TO SURVEY STATION 5867+32

028-14

RIGHT OF WAY AND TRACK MAP  
 NASHVILLE AND DECATUR R. R. CO.  
 OPERATED BY  
 LOUISVILLE AND NASHVILLE R. R. CO.  
 STATION 5761+72 TO STATION 5867+32  
 SCALE 1 INCH = 200 FT. JUNE 30, 1917.

VALUATION ENGINEER

OFFICE OF CHIEF ENGINEER  
 LOUISVILLE, KY.

14-31