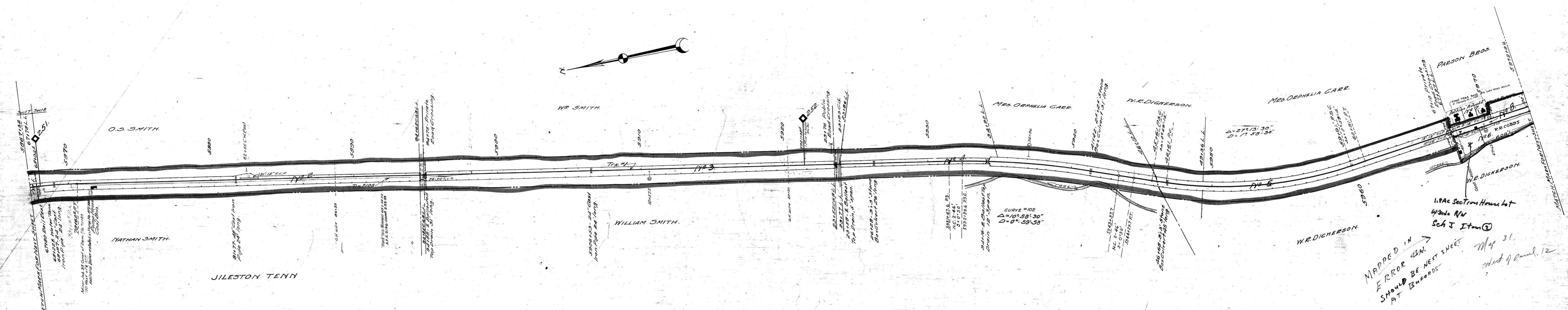


AEE No. DATE CORR. DESCRIPTION OF CHANGE
 5887 6-9-25 LIST OF ADDITIONAL BOLDS IN PLANS
 5888 8-1-25 RPT. OF SEC. 16, E. FOR 7 (PART ONLY)
 5889 8-31-25 Old Pump Sta. Not New



L.F.	Contract No.	Date	Description
27003	26942	11-12-52	Sou. Bell Tel. & Tel. Co. O.H. Wire Crossing Sta 886+53
43141	40907	10-9-53	Mrs. F.D. Polk 1/2" Water line X-ing under Sta 671+57
	34510	2-2-46	R.R. Cobbs Lease of 1.8 Acres from U.S. 671+27 to 72+95

SHEET NO. 32 OF 52 OF NASHVILLE AND DECATUR DIVISION FROM SURVEY.
 STATION 5867+32 TO SURVEY STATION 5972+92

VALUATION ENGINEER

RIGHT OF WAY AND TRACK MAP
 NASHVILLE AND DECATUR R. R. CO.
 OPERATED BY
 LOUISVILLE AND NASHVILLE R. R. CO.
 STATION 5867+32 TO STATION 5972+92
 SCALE: 1 INCH = 200 FT. JUNE 30, 1917.

028-15

