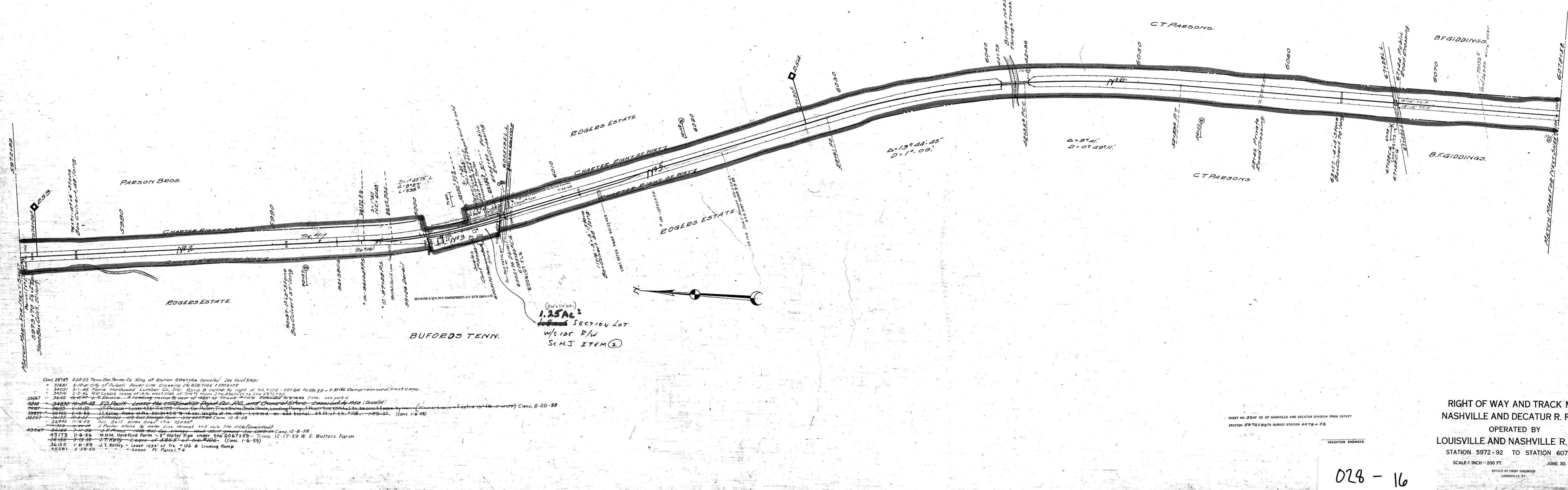


A.E.C. No. Date Comp Description of Changes
 6574 6-8-25 DETOP SCAMMONTAINS OF STOCK RAIL.
 10045 8-29-30 TRK. OF SANITARY TOILETS BUREAU.
 16837 Plan of Platform Station 60031.50
 25153 Det. Kelly, 500' Plan of Stock Park.
 35408 6-6-35 Plan of Trk. #107
 39004 9-23-42 Plan of Trk. #107
 39567 3-12-51 Ret Depot and Ph Parcel #4



Cont. 25169 4-20-32 Tenn. Elec. Power Co. Xing at Station 6067+56 Canceled. See Cont. 31651
 " 31651 5-18-34 City of Pulaski Power Line Crossing the BOC 7456 45006122
 " 34071 3-1-48 Farme Hardwood Lumber Co. Inc. Ramp B Incline to right of Trk. #106 02164 to 03139 - 1-31-46 Ramp removed, cont. cap.
 " 34716 2-5-54 R.E. Gibbs lease of Trk. #106 west side of Trk. #106 from Sta. 5972+92 to Sta. 5972+95
 39267 3-6-55 J.T. Kelley Lease of 120' of Trk. #106 from Sta. 5972+95 to Sta. 5972+100
 39267 3-6-55 J.T. Kelley Lease of 120' of Trk. #106 from Sta. 5972+100 to Sta. 5972+105
 39267 3-6-55 J.T. Kelley Lease of 120' of Trk. #106 from Sta. 5972+105 to Sta. 5972+110
 39267 3-6-55 J.T. Kelley Lease of 120' of Trk. #106 from Sta. 5972+110 to Sta. 5972+115
 39267 3-6-55 J.T. Kelley Lease of 120' of Trk. #106 from Sta. 5972+115 to Sta. 5972+120
 39267 3-6-55 J.T. Kelley Lease of 120' of Trk. #106 from Sta. 5972+120 to Sta. 5972+125
 39267 3-6-55 J.T. Kelley Lease of 120' of Trk. #106 from Sta. 5972+125 to Sta. 5972+130
 39267 3-6-55 J.T. Kelley Lease of 120' of Trk. #106 from Sta. 5972+130 to Sta. 5972+135
 39267 3-6-55 J.T. Kelley Lease of 120' of Trk. #106 from Sta. 5972+135 to Sta. 5972+140
 39267 3-6-55 J.T. Kelley Lease of 120' of Trk. #106 from Sta. 5972+140 to Sta. 5972+145
 39267 3-6-55 J.T. Kelley Lease of 120' of Trk. #106 from Sta. 5972+145 to Sta. 5972+150
 39267 3-6-55 J.T. Kelley Lease of 120' of Trk. #106 from Sta. 5972+150 to Sta. 5972+155
 39267 3-6-55 J.T. Kelley Lease of 120' of Trk. #106 from Sta. 5972+155 to Sta. 5972+160
 39267 3-6-55 J.T. Kelley Lease of 120' of Trk. #106 from Sta. 5972+160 to Sta. 5972+165
 39267 3-6-55 J.T. Kelley Lease of 120' of Trk. #106 from Sta. 5972+165 to Sta. 5972+170
 39267 3-6-55 J.T. Kelley Lease of 120' of Trk. #106 from Sta. 5972+170 to Sta. 5972+175
 39267 3-6-55 J.T. Kelley Lease of 120' of Trk. #106 from Sta. 5972+175 to Sta. 5972+180
 39267 3-6-55 J.T. Kelley Lease of 120' of Trk. #106 from Sta. 5972+180 to Sta. 5972+185
 39267 3-6-55 J.T. Kelley Lease of 120' of Trk. #106 from Sta. 5972+185 to Sta. 5972+190
 39267 3-6-55 J.T. Kelley Lease of 120' of Trk. #106 from Sta. 5972+190 to Sta. 5972+195
 39267 3-6-55 J.T. Kelley Lease of 120' of Trk. #106 from Sta. 5972+195 to Sta. 5972+200

SHEET NO. 33 OF 32 OF NASHVILLE AND DECATUR DIVISION FROM SURVEY
 STATION 5972+92 TO SURVEY STATION 6078+52

RIGHT OF WAY AND TRACK MAP
NASHVILLE AND DECATUR R. R. CO.
 OPERATED BY
LOUISVILLE AND NASHVILLE R. R. CO.
 STATION 5972+92 TO STATION 6078+52
 SCALE 1 INCH = 200 FT. JUNE 30, 1917.
 OFFICE OF CHIEF ENGINEER
 LOUISVILLE, KY.

028 - 16

33
 V.A.
 33