

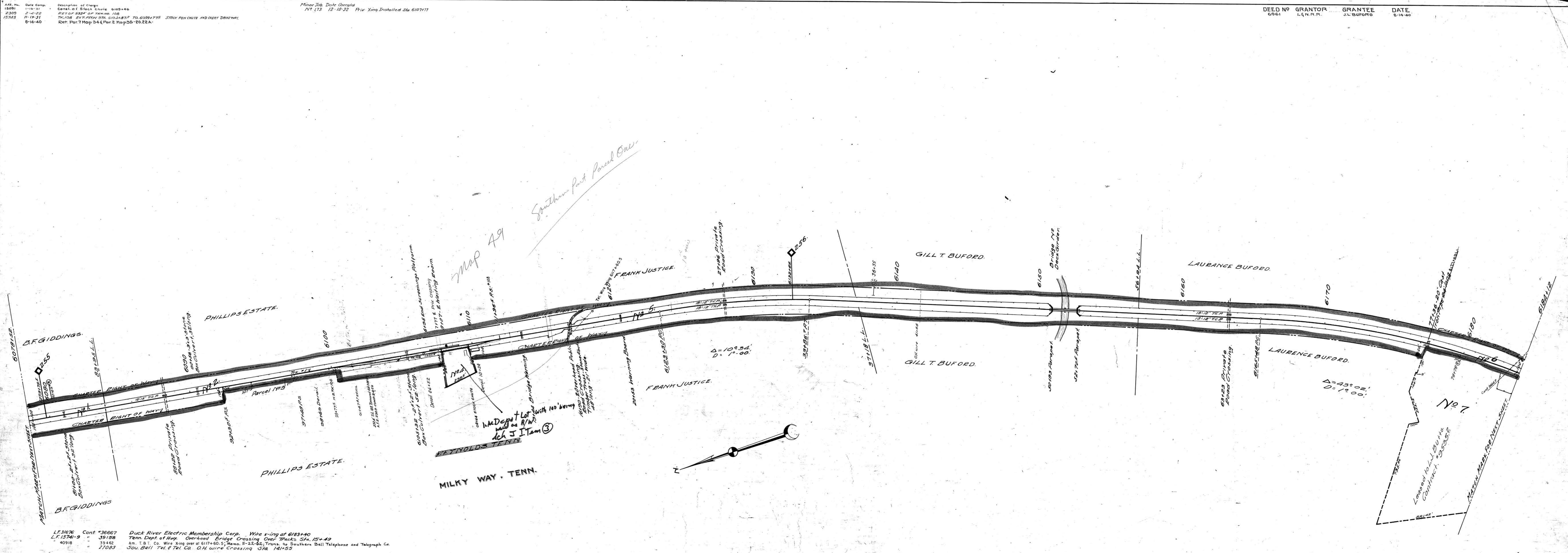
APP. No. 18091
 2309
 15743
 6-14-40

Date Comp. 1-16-31
 2-6-32
 11-19-31

Description of Charge
 Const. of Stock Chute 6109+40
 RET. OF 332' OF TRACK No. 108
 TRUCKS BY TRACKS STA. 6102+87 TO 6099+775 STOCK PEN CHUTE AND CHRT. DRIVEWAY
 Ref. Part 1 Map 54 & Part 2 Map 55-50.22A

Minor Job Dale Corry
 No. 173 12-10-32 Priv. Xing Installed Sta. 6107+17

DEED NO. 6961 GRANTOR L. N. R. R. GRANTEE J. L. BUFORD DATE 6-14-40



LF 31676 Cont. #38867 Duck River Electric Membership Corp. Wire x-ing at 6183+40
 LF 13741-9 " 35158 Tenn. Dept. of Hwy. Overhead Bridge Crossing Over Tracks Sta. 15+49
 40918 " 39462 Am. T. & T. Co. Wire Xing over at 6117+60.5; Home S-25-54; Trans. to Southern Bell Telephone and Telegraph Co.
 " 27093 Sou. Bell Tel. & Tel. Co. O.H. wire Crossing Sta. 141+35

SHEET NO. 34 OF 52 OF NASHVILLE AND DECATUR DIVISION FROM SURVEY
 STATION 6078+52 TO SURVEY STATION 6184+12

VALUATION ENGINEER

RIGHT OF WAY AND TRACK MAP
 NASHVILLE AND DECATUR R. R. CO.
 OPERATED BY
 LOUISVILLE AND NASHVILLE R. R. CO.
 STATION 6078+52 TO STATION 6184+12
 SCALE 1 INCH = 200 FT. JUNE 30, 1917.

028-17

GILES COUNTY, TENN.

34
 34