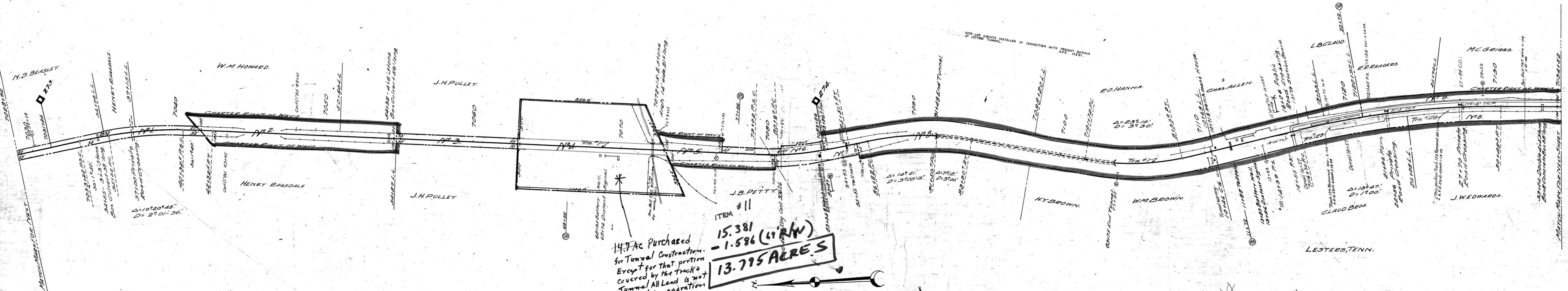


AFE No. Date Comp. Description of Change.
 12321 6-26-29 Inst. of Over Lap Circuits in connection with present signals at Letters Tunnel.
 230 1-10-33 Part of Portion of Trk. 128
 23612 33



Fence on both sides from Sta. 7028+92 to Sta. 7063+00 and from Sta. 7072+00 to Sta. 7089+50. Also 3 1/2 in. ft. fence around Parcel N#4 all owned by R.R. Co.
 Cont. 30626 1-31-39 City of Pulaski, Tenn. 4 Wires X'ing at 7080+10
 31887 2-27-41 W.M. Warren Lease Part Parcel 225 Wide on East from Sta. 7082+00 to 7091+00 Cont. 12-2-05

ITEM #11
 15.381 - 1.586 (L.R.W)
 13.795 ACRES
 14.7 Ac Purchased for Tunnel Construction. Except for that portion covered by the track & Tunnel All Land is not needed in operation
 Sch J Item

Map 149
 North of Parcel 17

RIGHT OF WAY AND TRACK MAP
 NASHVILLE AND DECATUR R. R. CO.
 OPERATED BY
 LOUISVILLE AND NASHVILLE R. R. CO.
 STATION 7028+92 TO STATION 7134+52
 SCALE: 1 INCH = 200 FT.
 JUNE 30, 1917
 OFFICE OF CHIEF ENGINEER
 LOUISVILLE, KY.

028-26

114
 43