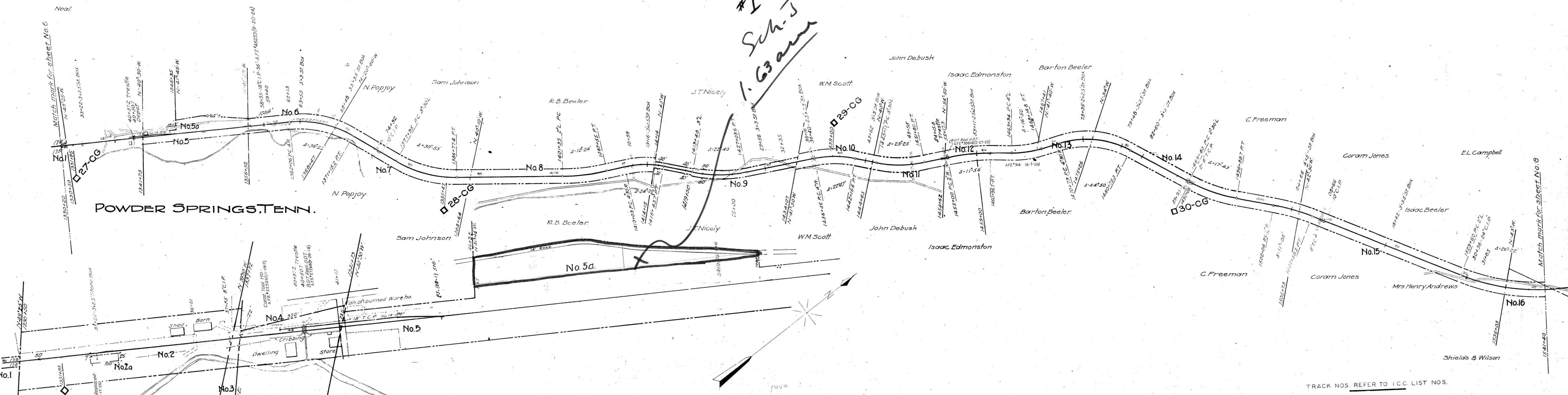


GRAINGER COUNTY, TENN.

#1
Sch. 5
1.63 am



POWDER SPRINGS, TENN.

POWDER SPRINGS, TENN.

THIS MAP WAS NOT PREPARED OR INTENDED FOR USE AS A REAL ESTATE TITLE MAP. THE RAILWAY COMPANY DOES NOT REPRESENT OR SUGGEST THAT THE PROPERTY LINES AND RIGHT-OF-WAY LINES SHOWN ON THE MAP ARE ACCURATE, OR THAT ANY OTHER INFORMATION ON THE MAP IS CORRECT. THE COMPANY DOES NOT REPRESENT THAT IT HAS CHECKED THIS MAP FOR ACCURACY.

Note: See letter dated Oct. 3, 1934, from Mr. Horne to Mr. Herman file 455-29, in Asst. Sect. office, for change of R/W to 200'

TRACK NOS. REFER TO I.C.C. LIST NOS.
RIGHT-OF-WAY AND TRACK MAP
SOUTHERN RAILWAY COMPANY
 Operated by the
SOUTHERN RAILWAY COMPANY
 COSTER DIVISION
 STATION 1330 + 20 TO STATION 1541 + 40
 SCALE 1 IN. = 400 FT. DECEMBER 31, 1927

029-02

Office of Chief Engineer
 Washington, D.C.

STATIONING REFERS TO I.C.C. INVENTORY CHAINAGE 1916.



Tracts corrected to Dec. 31, 1937.