

GREEN COUNTY, TENN.

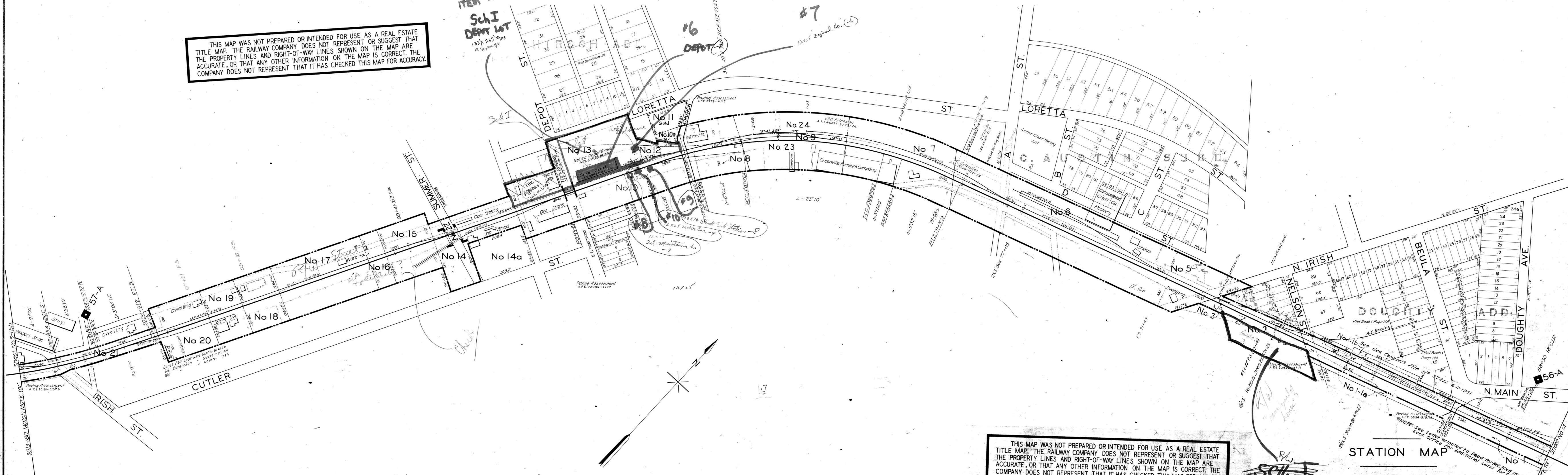
# GREENVILLE, TENN.

THIS MAP WAS NOT PREPARED OR INTENDED FOR USE AS A REAL ESTATE TITLE MAP. THE RAILWAY COMPANY DOES NOT REPRESENT OR SUGGEST THAT THE PROPERTY LINES AND RIGHT-OF-WAY LINES SHOWN ON THE MAP ARE ACCURATE, OR THAT ANY OTHER INFORMATION ON THE MAP IS CORRECT. THE COMPANY DOES NOT REPRESENT THAT IT HAS CHECKED THIS MAP FOR ACCURACY.

ITEM #5  
Sch I  
DEPT LOT  
1937 245  
A 10 200 45

#6  
DEPT

#7  
1935 Signal No. (-)



THIS MAP WAS NOT PREPARED OR INTENDED FOR USE AS A REAL ESTATE TITLE MAP. THE RAILWAY COMPANY DOES NOT REPRESENT OR SUGGEST THAT THE PROPERTY LINES AND RIGHT-OF-WAY LINES SHOWN ON THE MAP ARE ACCURATE, OR THAT ANY OTHER INFORMATION ON THE MAP IS CORRECT. THE COMPANY DOES NOT REPRESENT THAT IT HAS CHECKED THIS MAP FOR ACCURACY.

SCH. J

## STATION MAP

SOUTHERN RAILWAY COMPANY  
 Operated by  
 SOUTHERN RAILWAY COMPANY  
 KNOXVILLE DIVISION  
 STATION 2956+80 TO STATION 3013+80  
 SCALE: 1 IN. = 100 FT. DECEMBER 31, 1927

D30 - 05

Office of Chief Engineer  
Washington, D. C.

TRACK NUMBERS REFER TO I.C.C. LIST NUMBERS  
STATIONING REFERS TO I.C.C. INVENTORY CHAINAGE - 1916

V-57  
S-15a