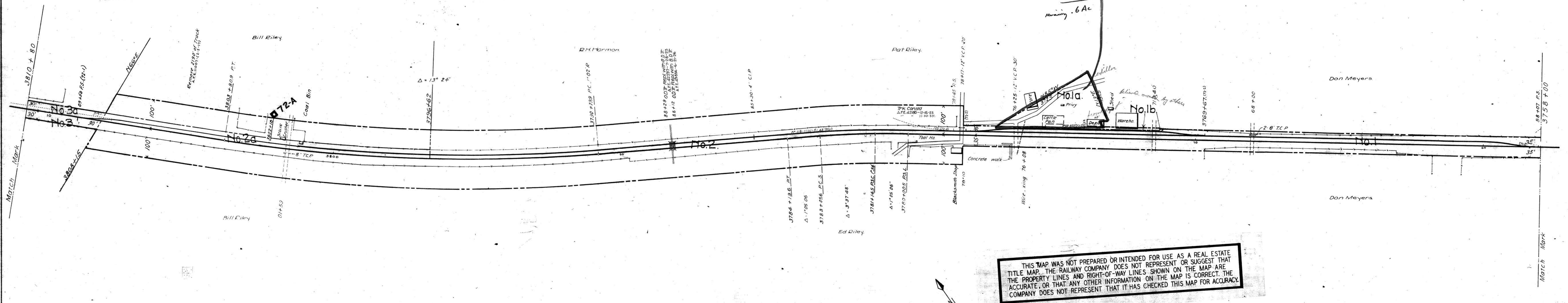


GREENE COUNTY, TENN.

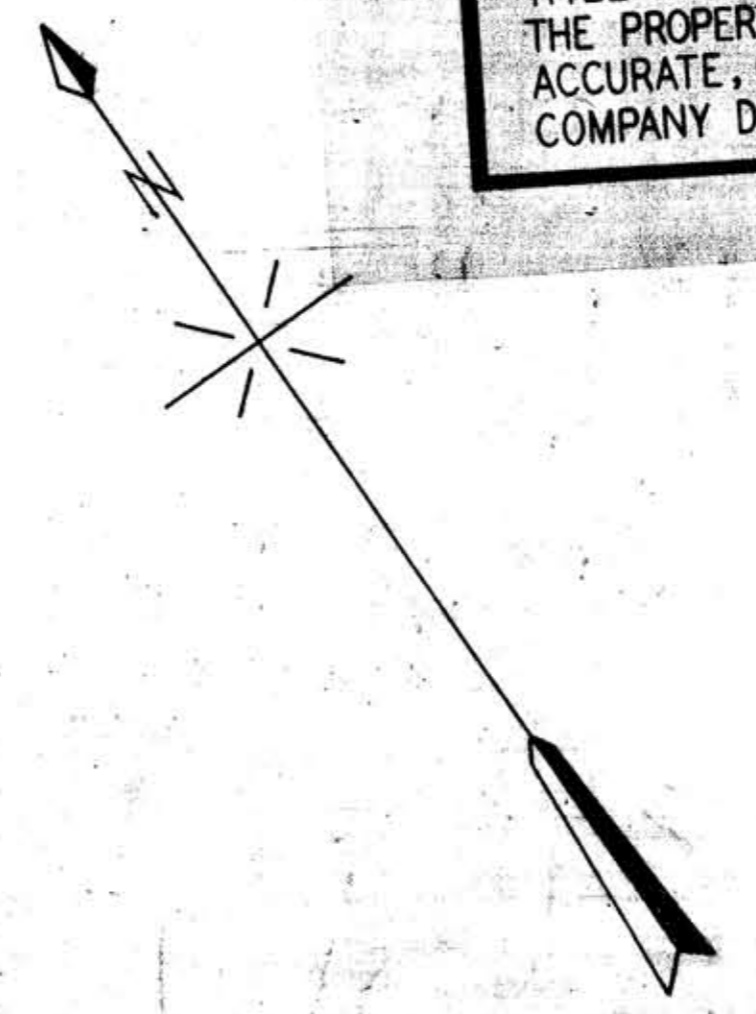
MOHAWK, TENN.

THIS MAP WAS NOT PREPARED OR INTENDED FOR USE AS A REAL ESTATE TITLE MAP. THE RAILWAY COMPANY DOES NOT REPRESENT OR SUGGEST THAT THE PROPERTY LINES AND RIGHT-OF-WAY LINES SHOWN ON THE MAP ARE ACCURATE, OR THAT ANY OTHER INFORMATION ON THE MAP IS CORRECT. THE COMPANY DOES NOT REPRESENT THAT IT HAS CHECKED THIS MAP FOR ACCURACY.

ITEM #16  
Sect J  
8 ACRE



THIS MAP WAS NOT PREPARED OR INTENDED FOR USE AS A REAL ESTATE TITLE MAP. THE RAILWAY COMPANY DOES NOT REPRESENT OR SUGGEST THAT THE PROPERTY LINES AND RIGHT-OF-WAY LINES SHOWN ON THE MAP ARE ACCURATE, OR THAT ANY OTHER INFORMATION ON THE MAP IS CORRECT. THE COMPANY DOES NOT REPRESENT THAT IT HAS CHECKED THIS MAP FOR ACCURACY.



030 - 11

TRACK NUMBERS REFER TO ICC. LIST NUMBERS

**STATION MAP**  
**SOUTHERN RAILWAY COMPANY**  
Operated by the  
**SOUTHERN RAILWAY COMPANY**  
KNOXVILLE DIVISION

STATION 3758+00 TO STATION 3810+80  
SCALE 1 IN. = 100 FT. DEC. 31, 1927

Office of Special Engineer  
Washington, D.C.

STATIONING REFERS TO ICC INVENTORY CHAINAGE-1916

