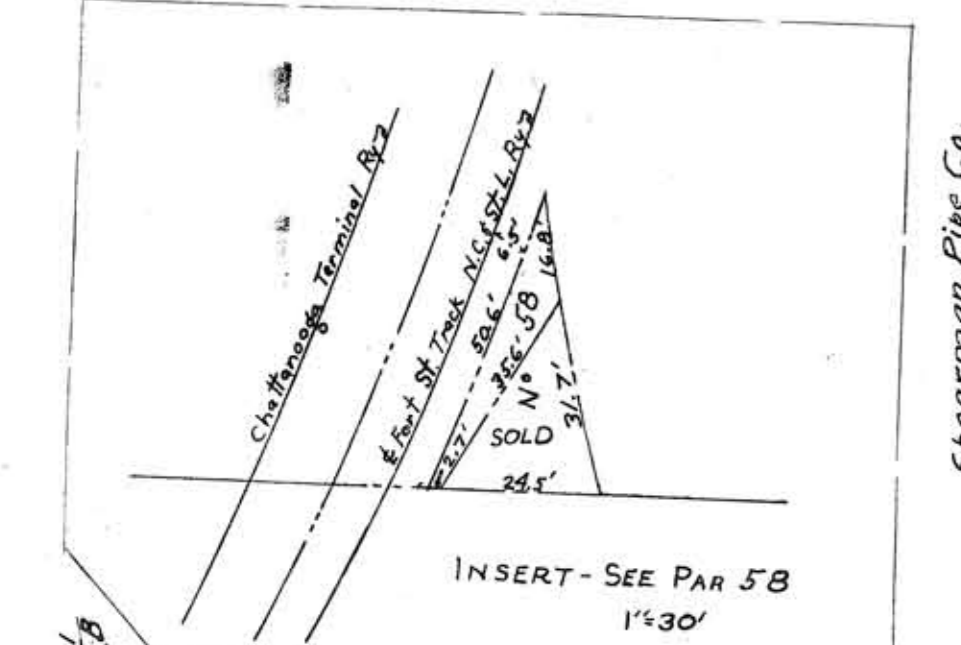


NOTES:-  
 For Land Schedule see Sheet No.  
 For location of old Drain Pipes, Water Pipes etc. in vicinity of Union Depot see old Sheets No. 708-B-3 and 708-B-3A  
 For present Water, Steam and Drain Pipes in vicinity of Union Depot see Dr. No. 541-29-K

A.F.E.	Date	Description
51761	10-20-59	Sale of Parcel 1 to Willingham & Co.
53845	10-8-61	Ret. Trk. 131 at 720+34
54847	7-30-62	Install. 27' strip of pavement, sta. 8010+70 to 8012+52
57317	11-10-64	Ret. automobile pit from
57922	1-8-65	Ret. 180' of Trk. #135
58436	11-29-67	Ret. 310' of N#1 Butterfly shed
58478	11-29-67	Ret. watchman's house Sta. 8034+42
59678	6-24-68	Ret. watchman's house Sta. 720+750
59689	6-24-68	Change at union station
58437	1-31-67	Drainage improvements in Trk. 142 Sta. 2+71 2x4' catch basin
61850	10-30-68	

# CHATTANOOGA, TENN.

Cont.	Date	Description
45713	8-18-59	Motorist Trk. - Lease land at 11th Market St.
45944	8-23-59	Hamilton Bag Co. - Lease of Warehouse at 11th & Carter St. Canc. 7-23-63
45926	7-16-58	Dept. of Hwy. & City of Chattanooga - Relocating Passenger and Freight Facilities
46022	6-16-55	R. C. Jones & Son - Lease of the North 25' of the warehouse at the northeast corner of Carter and West Eleventh St. - Trans. 9-10-58 Beth Bean Co.
44822	8-26-58	Swift & Co. - Lease of land in Par. 25
44968	11-6-58	Charles G. Satterfield - Quitting of N.A. West 11th St. Canc.
44322	1-3-59	Tenn. Valley Advertising Co. - 12' x 18' sign on roof Storefront Market St.
45160	1-23-59	Acme Fast Freight, Inc. - Lease of 20' x 120' of space in Freight House
45395	8-7-59	Brelman, Inc. - 10' driveway between Trks. #7 & #10
45826	6-11-59	Ervin, Inc. - Lease land between
46819	11-23-60	Brookfield Shoe Chemical Co. - Broad Market St. fronting on W. 11th St. - Ext. to 12-27-69
4482	9-26-61	Shaw Supply Co. - Lease land
44525	10-2-62	W. B. Williams Co. - Lease land
4482	2-2-62	W. B. Williams Co. - Lease land
45594	10-21-64	Textile Rubber & Chemical Co. - Lease 170' of Trk. #7 - Memo 5-17-66 increase lease to 80' of Trk. #7
50771	12-28-64	Stakin Steel & Supply Co. Inc.



Cont.	Date	Description
44445	7-18-58	H. D. Hervey - Space of Passenger Depot for News Stand - Trans. 10-1-58 Canc. 6-19-59
44073	1-18-58	Fred Carr - Lease of storeroom at 1111 Market St.
44183	2-7-58	Jack W. Shuman - Lease of 100 feet of Trk. #112
44184	2-7-58	" of land at 1201-1205 Broad St.
44273	4-11-58	Ramirez Storage Co. - Lease Warehouse Space 113 & Carter St. Canc. 8-12-63
44312	4-23-58	E. B. Morison - Lease of storeroom at 1023 Market St.
44313	4-29-58	J. Spurr - Lease of storeroom at W. 11th St. - Canc.
44316	4-23-58	L. D. Turner - Lease of storeroom at 1025 Market St.
44317	5-1-58	Wayne L. Bowman - Lease of storeroom at 1204 Chestnut St.
44374	8-25-58	J. H. Park - Lease of storeroom at 1027 Market St. - Canc.
44375	8-25-58	Robert Belcher - Lease of storeroom at 1027 Market St. - Canc.
52187	6-4-66	Mid-State Materials Co., Inc. - Lease 50' of track N#149, install conveyor pit at 800

STATION MAP  
 THE NASHVILLE, CHATTANOOGA AND ST. LOUIS RY.  
 AND  
 WESTERN AND ATLANTIC R. R.  
 OPERATED BY THE  
 NASHVILLE, CHATTANOOGA AND ST. LOUIS RY.  
**CHATTANOOGA TERMINALS**  
 STATION 7204160 NC&STL TO STATION 8026176 NC&STL  
 7206180 W&A TO STATION 7223105 W&A  
 SCALE - 1" = 400 FT.  
 SEPTEMBER 197 1928

033-047B