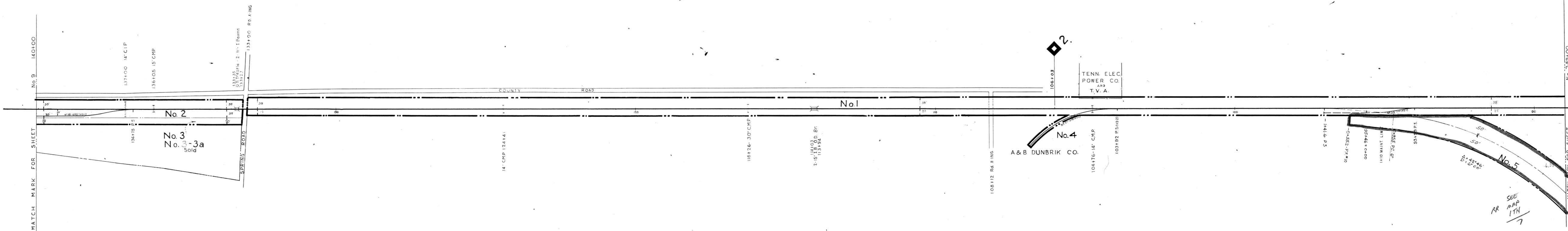
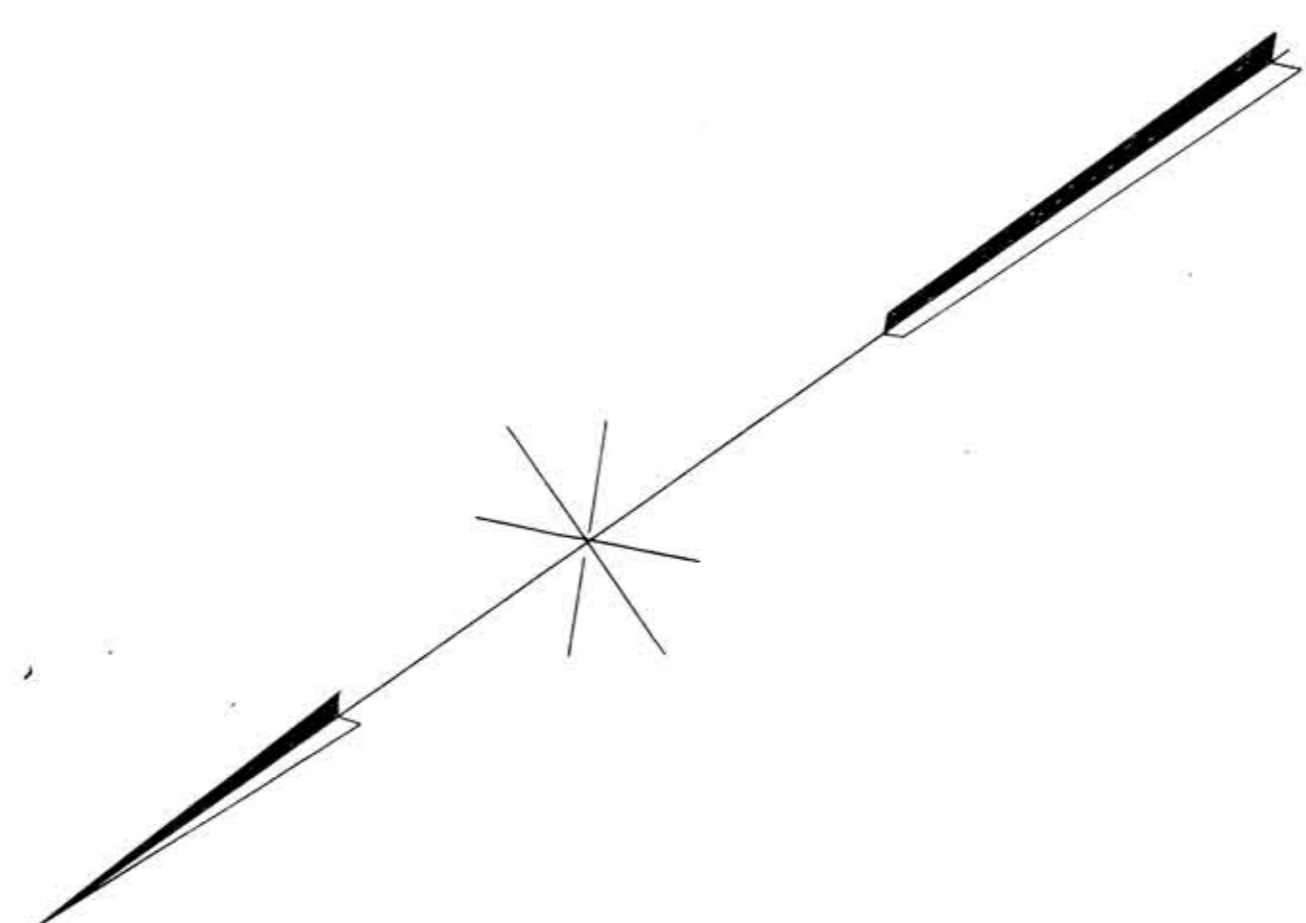


HAMILTON COUNTY TENN.



CHATTANOOGA TRACTION CO.  
Operated by the  
CHATTANOOGA TRACTION CO.

THE RAILWAY DOES NOT  
GUARANTEE THE ACCURACY  
OF THE INFORMATION  
SHOWN ON THIS MAP

STATION 89+00 TO STATION 140+00  
SCALE: 1 IN. = 100 FT. MAY 25, 1948

Office of Chief Engineer  
Washington, D. C.

033-120

3-TN  
8

1-TENN  
8

MATCH MARK FOR SHEET No. 9 140+00

MATCH MARK FOR SHEET No. 7 85+00