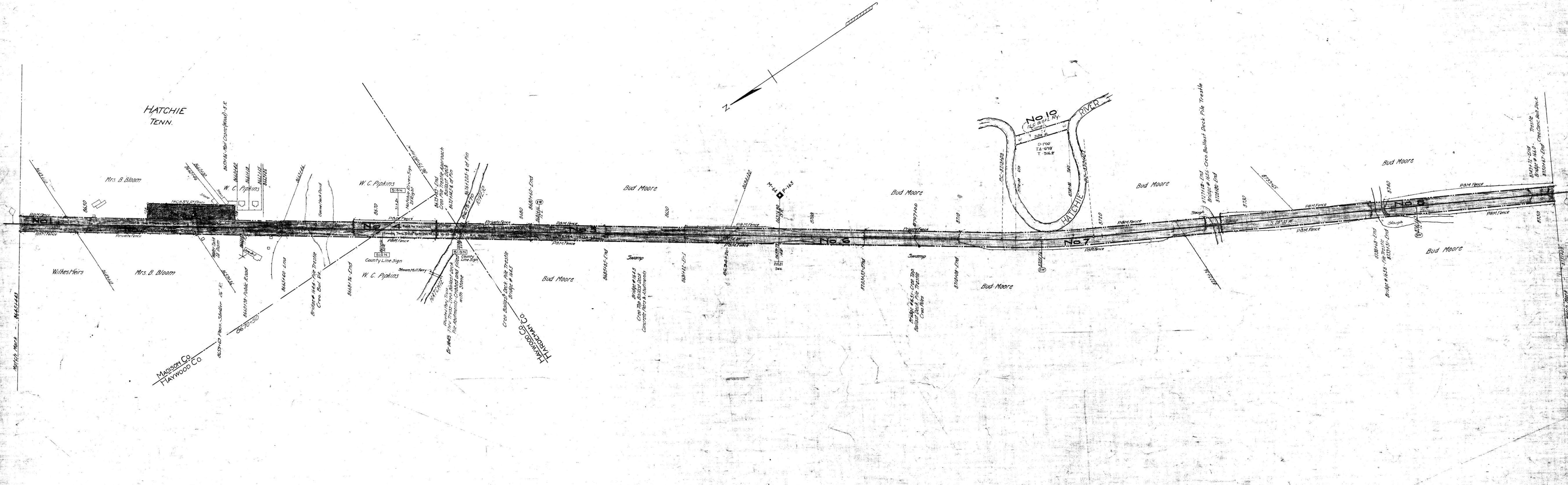


NO.	GRANTOR	GRANTEE	INSTRUMENT	DATE	RECORD	CURT. NO.	REMARKS
1	J.S. Wilkes	Tenn. Midland Ry. Co.	Deed	Feb. 11, 1887	DB 66-49-Oct. 20, 1904	2641	Note 1
2	E.A. Wilson	Tenn. Midland Ry. Co.	Deed	Feb. 8, 1887	DB 64-537-Mar. 8, 1904	2611	Note 1
3	F.A. Wilson	Tenn. Midland Ry. Co.	Deed	July 5, 1888	DB 64-536-Mar. 8, 1904	2610	Note 2
4	F.S. Wilkes	Tenn. Midland Ry. Co.	Deed	Feb. 11, 1887	DB 66-49-Oct. 20, 1904	2641	Note 1
5	R.H. Whitley	Tenn. Midland Ry. Co.	Deed	July 4, 1887	DB PP-574-Nov. 1, 1904	2755	Note 1
6	S.W. Fiedale	Tenn. Midland Ry. Co.	Deed	July 4, 1887	DB PP-576-Nov. 1, 1904	2756	Note 1
7	W.H. Fiedale	Tenn. Midland Ry. Co.	Deed	July 5, 1887	DB PP-578-Nov. 1, 1904	2757	Note 1
8	I.N. Fiedale	Tenn. Midland Ry. Co.	Deed	July 6, 1887	DB PP-580-Nov. 1, 1904	2758	Note 1

Also see deed 3384 J.W. Phillips to the Louisville & Nashville Railroad Company, dated December 14, 1895, recorded DB 54, page 479, Madison County; DB KK page 105 Hardeman County.  
 NOTE 1- Deed also grants following rights relative to adjoining lands (1) to cut timber which endangers roadway (2) to change course of streams (3) to waste and borrow.  
 NOTE 2- Deed also grants following rights relative to adjoining lands (1) to cut timber which endangers roadway (2) to change course of streams.



RIGHT-OF-WAY AND TRACK MAP  
 LOUISVILLE & NASHVILLE R.R.  
 OPERATED BY THE  
 NASHVILLE, CHATTANOOGA AND ST. LOUIS RY.  
 PADUCAH & MEMPHIS DIV.

STATION 8645+44.3 TO STATION 8701+00  
 SCALE 1 IN. = 200 FT. JUNE 30, 1916  
 OFFICE OF CHIEF ENGINEER  
 NASHVILLE, TENN.  
 Division Engineer

HARDEMAN, MADISON & HAYWOOD COS. TENN.

035-008

M.P. 1640 to 166.0