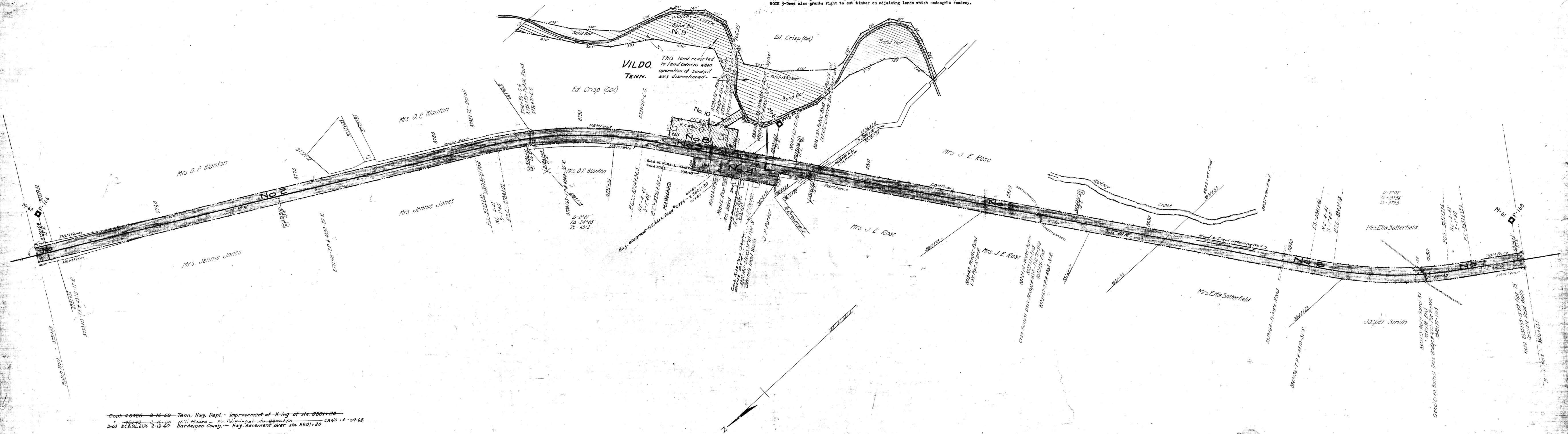


NO.	GRANTOR	GRANTEE	INSTRUMENT	DATE	RECORD	CURT. NO.	REMARKS
1	I. H. Tisdale	Tenn. Midland Ry. Co.	Deed	July 1, 1887	DB PP-106-Nov. 1, 1904	2756	Note 1
2	W. Jones et al	Tenn. Midland Ry. Co.	Deed	July 1, 1887	DB PP-606-Nov. 3, 1904	2752	Note 2
3	J. R. Moore	Tenn. Midland Ry. Co.	Deed	Feb. 5, 1887	DB PP-613-Nov. 3, 1904	2776	Note 1
4	L. C. Moore	Tenn. Midland Ry. Co.	Deed	July 9, 1888	DB PP-571-Oct. 31, 1904	2753	Note 1
5	J. T. Mitchell	Tenn. Midland Ry. Co.	Deed	July 11, 1887	DB PP-572-Oct. 31, 1904	2754	Note 1
6	W. H. Johnson	Tenn. Midland Ry. Co.	Deed	Feb. 8, 1887	DB PP-510-Nov. 3, 1904	2774	Note 1
7	J. N. Smith	Tenn. Midland Ry. Co.	Deed	July 25, 1887	DB PP-583-Nov. 2, 1904	2760	Note 3

Also see deed 3384 J. W. Phillips to the Louisville & Nashville Railroad Co. dated December 14, 1895, Recorded DB KK-page 108.
 NOTE 1-Deed also grants following rights relative to adjoining lands (1) to cut timber which endangers roadway (2) to change course of streams (3) to waste and barrow.
 NOTE 2-Deed also grants following rights relative to adjoining lands (1) to cut timber which endangers roadway (2) to change course of streams.
 NOTE 3-Deed also grants right to cut timber on adjoining lands which endangers roadway.



Cont. 46080 2-16-59 Tenn. Hwy. Dept. - Improvement of X-ing at sta. 8801+20
 DEED 2776 2-13-60 H.H. Moore - P.R. Building at sta. 8801+20 - CANC 10-24-68
 Deed N.C.R. 2776 2-13-60 Hardeman County - Hwy. easement over sta. 8801+20

RIGHT-OF-WAY AND TRACK MAP
 LOUISVILLE & NASHVILLE R.R.,
 OPERATED BY THE
 NASHVILLE, CHATTANOOGA AND ST. LOUIS RY.
 PADUCAH & MEMPHIS DIV.

STATION 8751+05 TO STATION 8856+65.1
 SCALE, 1 IN. = 200 FT. JUNE 30, 1916
 SHEET No. 60 of 93 Sheets of
 P. & M. Division from survey
 station 8751+05 to survey station
 8856+65.1
 OFFICE OF SURVEY ENGINEER
 NASHVILLE, TENN.
 Valuation Engineer

HARDEMAN CO. TENN.

035-009

M.P. 166.0 + 168.0