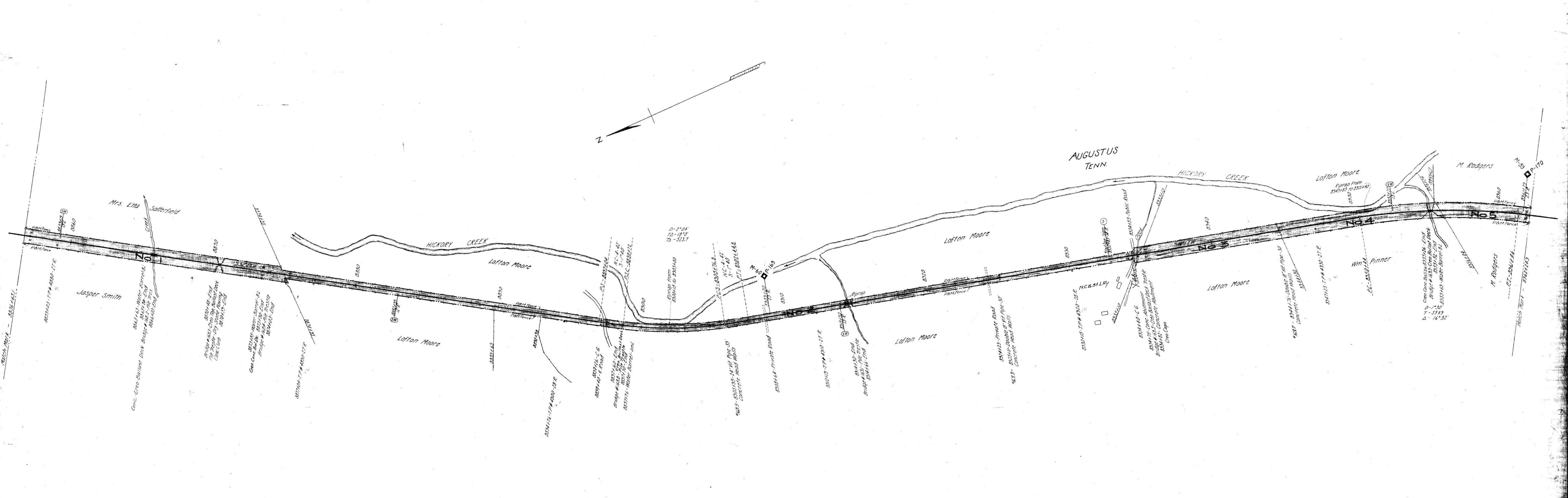


NO.	GRANTOR	GRANTEE	DATE	RECORD	CURT. NO.	REMARKS
1	J.N. Smith	Tenn. Midland Ry. Co.	July 25, 1887	DE PP-593-Nov. 2, 1904	2762	Note 3
2	J.A. Dore	Tenn. Midland Ry. Co.	July 25, 1887	DE PP-593-Nov. 2, 1904	2765	Note 2
3	Frank Trimble	Tenn. Midland Ry. Co.	Dec. 24, 1887	DE PP-593-Nov. 2, 1904	2732	Recorded in Fayette County
4	J.A. Neale	Tenn. Midland Ry. Co.	July 7, 1887	DE PP-593-Nov. 2, 1904	2764	Note 1
5	E.R. Drake	Tenn. Midland Ry. Co.	July 25, 1887	DE PP-611-Nov. 3, 1904	2767	

NO. 6
 GRANTEE: W.H. Pinner et al
 GRANTEE: N.C. & St. L. Ry.
 INSTRUMENT: Contract
 DATE: Jan. 27, 1915
 RECORD: Office of Secretary
 CURT. NO. 1505

Also see deed 3384 J.N. Phillips to the Louisville & Nashville Railroad Company dated December 14, 1885, Recorded DE PP-Page 109.
 NOTE 1- Deed also grants following rights relative to adjoining lands (1) to cut timber which endangers roadway (2) to change course of streams.
 NOTE 2- Deed also grants following rights relative to adjoining lands (1) to cut timber which endangers roadway (2) to change course of streams.
 NOTE 3- Deed also grants right to cut timber on adjoining lands which endangers roadway.



RIGHT-OF-WAY AND TRACK MAP
 LOUISVILLE & NASHVILLE R.R.
 OPERATED BY THE
 NASHVILLE, CHATTANOOGA AND ST. LOUIS RY.
 PADUCAH & MEMPHIS DIV.

STATION 8856+65.1 TO STATION 8862+24.9
 SCALE, 1 IN. = 200 FT. JUNE 30, 1916

OFFICE OF CHIEF ENGINEER
 NASHVILLE, TENN.
 Valuation Engineer

HARDEMAN CO., TENN.

AUGUSTUS

035-010

M.P. 168.0 to 170.0

61