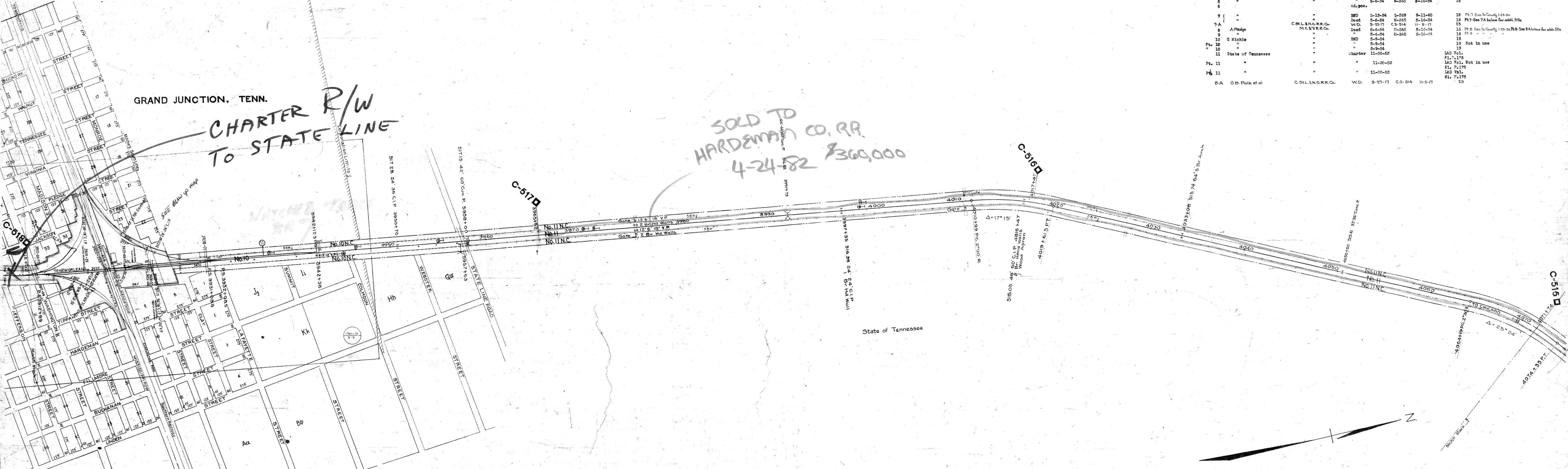


GRAND JUNCTION, TENN.

CHARTER R/W
TO STATE LINE

SOLD TO
HARDENMAN CO. RR.
4-24-82 \$300,000

No.	Grantor	Grantee	Instr. Date	Record	Dist. No.	Remarks	
1	A Pledge	M O & T R R Co.	RWD 2-13-54	Q-569	9-11-60	18	
Pt. 1	"	"	" 2-13-54	Q-569	9-11-60	18 Not in use	
Pt. 2	"	"	" 2-13-54	Q-569	9-11-60	18 " "	
Pt. 2	"	"	" 2-13-54	Q-569	9-11-60	18 Not in use	
Pt. 2	"	"	" 2-13-54	Q-569	9-11-60	18 " "	
3	"	"	" 2-13-54	Q-569	9-11-60	18	
4	"	"	Deed 5-6-54	M-245	5-16-54	16	
5	"	"	" 5-6-54	M-245	5-16-54	16	
6	"	"	Ad. pos.	" 5-6-54	M-245	5-16-54	16
7	"	"	RWD 2-13-54	Q-569	9-11-60	18 Pt. 7 Eas. to County 1-23-50	
7-A	"	"	Deed 5-6-54	M-245	5-16-54	16 Pt. 7-See 7A below for addi. title	
8	A Pledge	C. S. L. & N. O. R. R. Co.	W.D. 9-27-17	C-3-514	11-5-17	13	
9	"	M. C. & T. R. R. Co.	Deed 5-6-54	M-245	5-16-54	16 Pt. 8 Eas. to County 1-23-50 Pt. 8-See 8A below for addi. title	
10	G Michie	"	" 5-6-54	M-245	5-16-54	16 Pt. 9 " "	
Pt. 10	"	"	" 5-6-54	M-245	5-16-54	16	
Pt. 10	"	"	" 5-6-54	M-245	5-16-54	16	
11	State of Tennessee	"	Charter 11-20-53	"	"	19 L&D Vol. 21, P. 175	
Pt. 11	"	"	" 11-20-53	"	"	19 L&D Vol. 21, P. 175 Not in use	
Pt. 11	"	"	" 11-20-53	"	"	19 L&D Vol. 21, P. 175	
Pt. 11	"	"	" 11-20-53	"	"	19 L&D Vol. 21, P. 175	
Pt. 11	"	"	" 11-20-53	"	"	19 L&D Vol. 21, P. 175	
B-A	O.B. Polk et al	C. S. L. & N. O. R. R. Co.	W.D. 9-27-17	C-3-514	11-5-17	23	



INDEX	WORK	DESCRIPTION	DATE
1	1	Survey of Right of Way from Station 3678+42 to Station 4071+74	1916
2	2	Survey of Right of Way from Station 3678+42 to Station 4071+74	1916
3	3	Survey of Right of Way from Station 3678+42 to Station 4071+74	1916
4	4	Survey of Right of Way from Station 3678+42 to Station 4071+74	1916
5	5	Survey of Right of Way from Station 3678+42 to Station 4071+74	1916
6	6	Survey of Right of Way from Station 3678+42 to Station 4071+74	1916
7	7	Survey of Right of Way from Station 3678+42 to Station 4071+74	1916
8	8	Survey of Right of Way from Station 3678+42 to Station 4071+74	1916
9	9	Survey of Right of Way from Station 3678+42 to Station 4071+74	1916
10	10	Survey of Right of Way from Station 3678+42 to Station 4071+74	1916
11	11	Survey of Right of Way from Station 3678+42 to Station 4071+74	1916
12	12	Survey of Right of Way from Station 3678+42 to Station 4071+74	1916
13	13	Survey of Right of Way from Station 3678+42 to Station 4071+74	1916
14	14	Survey of Right of Way from Station 3678+42 to Station 4071+74	1916
15	15	Survey of Right of Way from Station 3678+42 to Station 4071+74	1916
16	16	Survey of Right of Way from Station 3678+42 to Station 4071+74	1916
17	17	Survey of Right of Way from Station 3678+42 to Station 4071+74	1916
18	18	Survey of Right of Way from Station 3678+42 to Station 4071+74	1916
19	19	Survey of Right of Way from Station 3678+42 to Station 4071+74	1916
20	20	Survey of Right of Way from Station 3678+42 to Station 4071+74	1916
21	21	Survey of Right of Way from Station 3678+42 to Station 4071+74	1916
22	22	Survey of Right of Way from Station 3678+42 to Station 4071+74	1916
23	23	Survey of Right of Way from Station 3678+42 to Station 4071+74	1916
24	24	Survey of Right of Way from Station 3678+42 to Station 4071+74	1916
25	25	Survey of Right of Way from Station 3678+42 to Station 4071+74	1916
26	26	Survey of Right of Way from Station 3678+42 to Station 4071+74	1916
27	27	Survey of Right of Way from Station 3678+42 to Station 4071+74	1916
28	28	Survey of Right of Way from Station 3678+42 to Station 4071+74	1916
29	29	Survey of Right of Way from Station 3678+42 to Station 4071+74	1916
30	30	Survey of Right of Way from Station 3678+42 to Station 4071+74	1916
31	31	Survey of Right of Way from Station 3678+42 to Station 4071+74	1916
32	32	Survey of Right of Way from Station 3678+42 to Station 4071+74	1916
33	33	Survey of Right of Way from Station 3678+42 to Station 4071+74	1916
34	34	Survey of Right of Way from Station 3678+42 to Station 4071+74	1916
35	35	Survey of Right of Way from Station 3678+42 to Station 4071+74	1916
36	36	Survey of Right of Way from Station 3678+42 to Station 4071+74	1916
37	37	Survey of Right of Way from Station 3678+42 to Station 4071+74	1916
38	38	Survey of Right of Way from Station 3678+42 to Station 4071+74	1916
39	39	Survey of Right of Way from Station 3678+42 to Station 4071+74	1916
40	40	Survey of Right of Way from Station 3678+42 to Station 4071+74	1916
41	41	Survey of Right of Way from Station 3678+42 to Station 4071+74	1916
42	42	Survey of Right of Way from Station 3678+42 to Station 4071+74	1916
43	43	Survey of Right of Way from Station 3678+42 to Station 4071+74	1916
44	44	Survey of Right of Way from Station 3678+42 to Station 4071+74	1916
45	45	Survey of Right of Way from Station 3678+42 to Station 4071+74	1916
46	46	Survey of Right of Way from Station 3678+42 to Station 4071+74	1916
47	47	Survey of Right of Way from Station 3678+42 to Station 4071+74	1916
48	48	Survey of Right of Way from Station 3678+42 to Station 4071+74	1916
49	49	Survey of Right of Way from Station 3678+42 to Station 4071+74	1916
50	50	Survey of Right of Way from Station 3678+42 to Station 4071+74	1916
51	51	Survey of Right of Way from Station 3678+42 to Station 4071+74	1916
52	52	Survey of Right of Way from Station 3678+42 to Station 4071+74	1916
53	53	Survey of Right of Way from Station 3678+42 to Station 4071+74	1916
54	54	Survey of Right of Way from Station 3678+42 to Station 4071+74	1916
55	55	Survey of Right of Way from Station 3678+42 to Station 4071+74	1916
56	56	Survey of Right of Way from Station 3678+42 to Station 4071+74	1916
57	57	Survey of Right of Way from Station 3678+42 to Station 4071+74	1916
58	58	Survey of Right of Way from Station 3678+42 to Station 4071+74	1916
59	59	Survey of Right of Way from Station 3678+42 to Station 4071+74	1916
60	60	Survey of Right of Way from Station 3678+42 to Station 4071+74	1916
61	61	Survey of Right of Way from Station 3678+42 to Station 4071+74	1916
62	62	Survey of Right of Way from Station 3678+42 to Station 4071+74	1916
63	63	Survey of Right of Way from Station 3678+42 to Station 4071+74	1916
64	64	Survey of Right of Way from Station 3678+42 to Station 4071+74	1916
65	65	Survey of Right of Way from Station 3678+42 to Station 4071+74	1916
66	66	Survey of Right of Way from Station 3678+42 to Station 4071+74	1916
67	67	Survey of Right of Way from Station 3678+42 to Station 4071+74	1916
68	68	Survey of Right of Way from Station 3678+42 to Station 4071+74	1916
69	69	Survey of Right of Way from Station 3678+42 to Station 4071+74	1916
70	70	Survey of Right of Way from Station 3678+42 to Station 4071+74	1916
71	71	Survey of Right of Way from Station 3678+42 to Station 4071+74	1916
72	72	Survey of Right of Way from Station 3678+42 to Station 4071+74	1916
73	73	Survey of Right of Way from Station 3678+42 to Station 4071+74	1916
74	74	Survey of Right of Way from Station 3678+42 to Station 4071+74	1916
75	75	Survey of Right of Way from Station 3678+42 to Station 4071+74	1916
76	76	Survey of Right of Way from Station 3678+42 to Station 4071+74	1916
77	77	Survey of Right of Way from Station 3678+42 to Station 4071+74	1916
78	78	Survey of Right of Way from Station 3678+42 to Station 4071+74	1916
79	79	Survey of Right of Way from Station 3678+42 to Station 4071+74	1916
80	80	Survey of Right of Way from Station 3678+42 to Station 4071+74	1916
81	81	Survey of Right of Way from Station 3678+42 to Station 4071+74	1916
82	82	Survey of Right of Way from Station 3678+42 to Station 4071+74	1916
83	83	Survey of Right of Way from Station 3678+42 to Station 4071+74	1916
84	84	Survey of Right of Way from Station 3678+42 to Station 4071+74	1916
85	85	Survey of Right of Way from Station 3678+42 to Station 4071+74	1916
86	86	Survey of Right of Way from Station 3678+42 to Station 4071+74	1916
87	87	Survey of Right of Way from Station 3678+42 to Station 4071+74	1916
88	88	Survey of Right of Way from Station 3678+42 to Station 4071+74	1916
89	89	Survey of Right of Way from Station 3678+42 to Station 4071+74	1916
90	90	Survey of Right of Way from Station 3678+42 to Station 4071+74	1916
91	91	Survey of Right of Way from Station 3678+42 to Station 4071+74	1916
92	92	Survey of Right of Way from Station 3678+42 to Station 4071+74	1916
93	93	Survey of Right of Way from Station 3678+42 to Station 4071+74	1916
94	94	Survey of Right of Way from Station 3678+42 to Station 4071+74	1916
95	95	Survey of Right of Way from Station 3678+42 to Station 4071+74	1916
96	96	Survey of Right of Way from Station 3678+42 to Station 4071+74	1916
97	97	Survey of Right of Way from Station 3678+42 to Station 4071+74	1916
98	98	Survey of Right of Way from Station 3678+42 to Station 4071+74	1916
99	99	Survey of Right of Way from Station 3678+42 to Station 4071+74	1916
100	100	Survey of Right of Way from Station 3678+42 to Station 4071+74	1916

Sheet No. 3 of 17 of valuation section I-Tenn. Miss. State line to Jackson of the Illinois Central Railroad Company from survey station 3678+42 to survey station 4071+74

035-022

RIGHT-OF-WAY AND TRACK MAP
CHICAGO, ST. LOUIS & NEW ORLEANS R.R.
OPERATED BY THE
ILLINOIS CENTRAL RAILROAD
TENN.-MISS. STATE LINE TO JACKSON
STATION 3912+02 TO STATION 4071+74
M. P. C-518 TO M. P. C-515
SCALE: 1" = 300 FT. JUNE 30, 1916.
OFFICE OF CHIEF ENGINEER.
CHICAGO, ILL.

