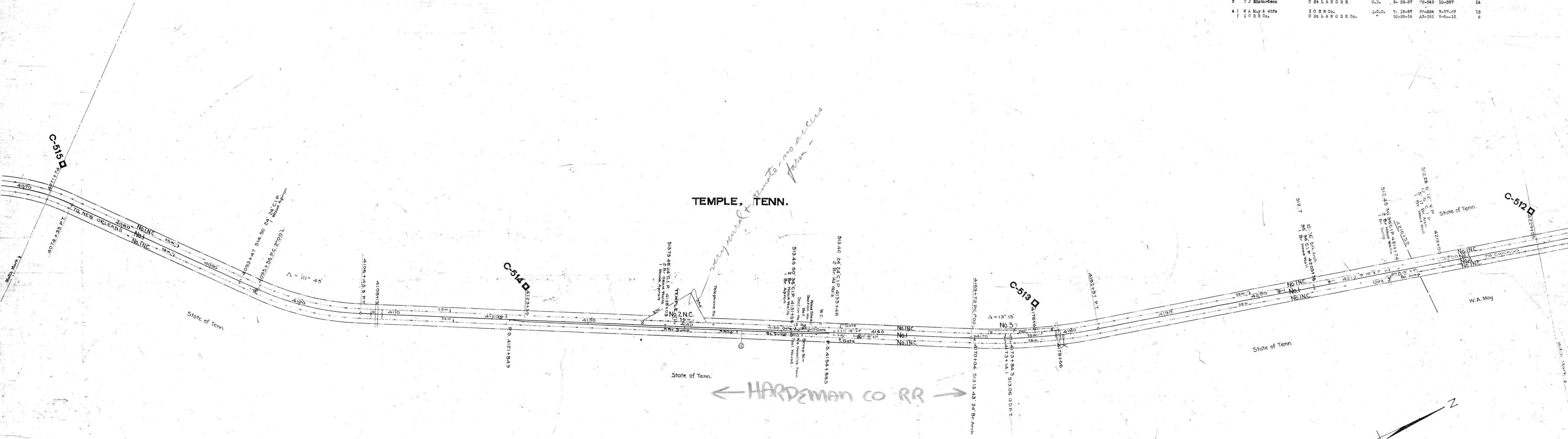


No.	Grantor	Grantee	Insty. Data	Record	Sust. No.	Remarks
1	State of Tennessee	M C & T R R Co.	Charter	11-30-53		L&D Vol. 1 P. 175
Pt. 1	"	"	"	11-30-53		L&D Vol. 1 Not in use P. 175
Pt. 1	"	"	"	11-30-53		L&D Vol. 1 Not in use P. 175
Pt. 1	"	"	"	11-30-53		L&D Vol. 1 Not in use P. 175
2	J Frowett	M C R R Co.	W.D.	4-28-62	R-391	5-30-68 Vol. 1 Not in use P. 175
3	T J Richardson	O St L & N O R R	W.D.	9-28-67	PP-549	10-28-67 P. 175
4	W A May & wife I O R R Co.	I O R R Co. O St L & N O R R Co.	J.D.D.	7-18-67 10-25-14	PP-524 AS-283	7-27-67 5-4-15 13 6



**RIGHT-OF-WAY AND TRACK MAP**  
**CHICAGO, ST. LOUIS & NEW ORLEANS R.R.**  
 OPERATED BY THE  
**ILLINOIS CENTRAL RAILROAD**  
**TENN.-MISS. STATE LINE TO JACKSON**

Sheet No. 4 of 17 of valuation section 1 Tenn-Miss State line to Jackson of the Illinois Central Railroad Company, from survey station 3678+42 to survey station 4233+52  
*S. H. Johnson*  
 Valuation Engineer

STATION 4071+74 TO STATION 4220+25  
 M. P. C-515 TO M. P. C-512  
 SCALE: 1 IN. = 300 FT.  
 JUNE 30, 1916  
 Rev. Dec. 31, 1927  
 OFFICE OF CHIEF ENGINEER.  
 CHICAGO, ILL.

035-025

