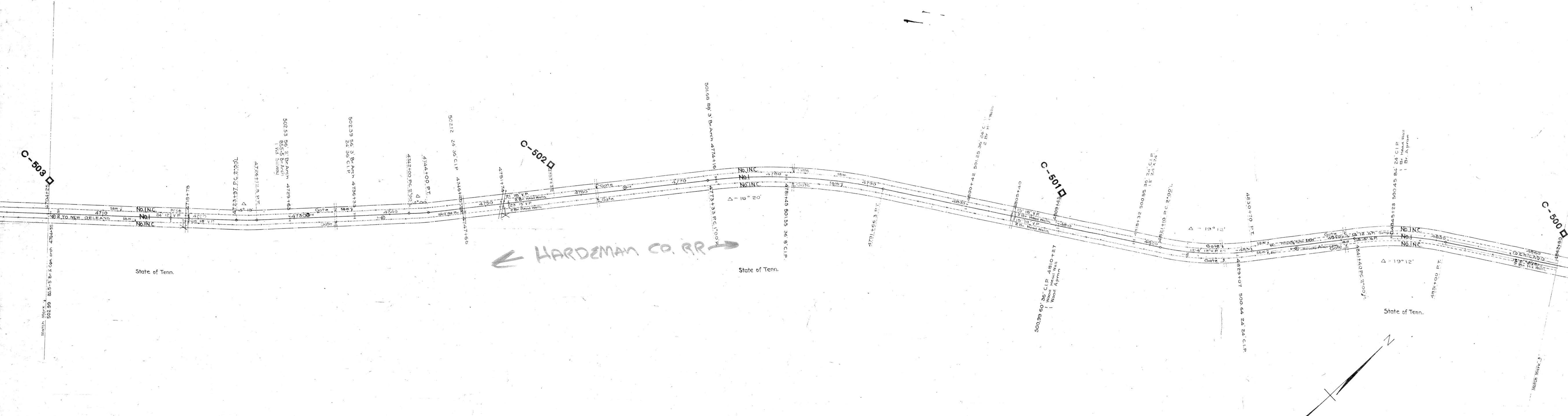


No.	Grantor	Grantee	Instr. Date	Recor.	Cont. No.	Remarks
1	State of Tennessee	M & P R R Co.	Charter 11-30-55		MS Vol. 1 P. 175.	
Pt. 1	"	"	" 11-30-55		MS Vol. 1	Not in use
Pt. 1	"	"	" 11-30-55		MS Vol. 1	Not in use



RIGHT-OF-WAY AND TRACK MAP
CHICAGO, ST. LOUIS & NEW ORLEANS R.R.
 OPERATED BY THE
ILLINOIS CENTRAL RAILROAD
TENN.-MISS. STATE LINE TO JACKSON
 STATION 4704+25 TO STATION 4862+80
 M. P. C-503 TO M. P. C-500
 SCALE 1 IN. = 300 FT.
 OFFICE OF CHIEF ENGINEER
 CHICAGO, ILL.

Sheet No. 17 of valuation section I-Tenn. 14 Tenn. Miss. State line
 to Jackson of the Illinois Central Railroad Company, from
 survey station 3678+42 to survey station 6235+32
 Valuation Engineer

035-029

