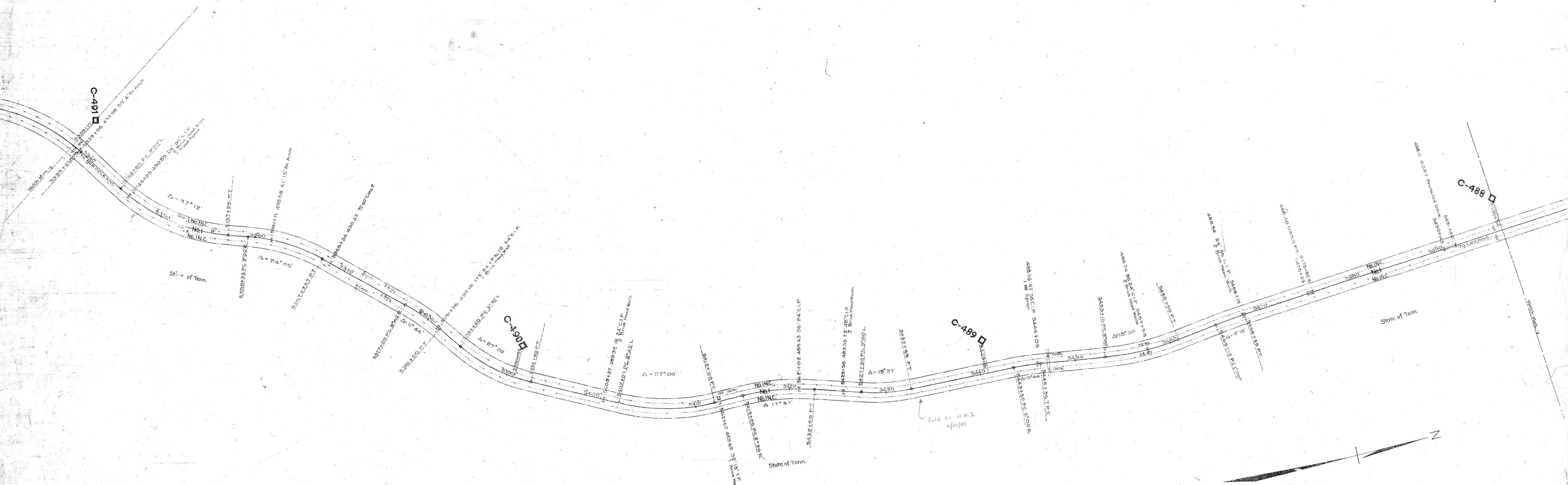


No.	Grantor	Grantee	Instr. Date	Record	Cont'd. Remarks
1	State of Tennessee	M & T R R Co.	Charter 11-30-53		L&D Vol. 1 P. 175.
Pt. 1	"	"	" 11-20-55		L&D Vol. 1 Not in use P. 175
Pt. 1	"	"	" 11-30-55		L&D Vol. 1 Not in use P. 175



INDEX NO.	WORK AUTH.	DESCRIPTION	DATE COMPLETED
1	3152-P	CHANGING TRACKS FROM 5336+10 TO 5400+54	Sept. 1916
2	3152-P	STANDARD TRACK	Sept. 1916

Sheet No. 12 of 17 of valuation section of Tenn. Miss. State line to Jackson of the Illinois Central Railroad Company, from survey station 5378+42 to survey station 6233+52
M. P. Brown
 Valuation Engineer

RIGHT-OF-WAY AND TRACK MAP
CHICAGO, ST. LOUIS & NEW ORLEANS R.R.
 OPERATED BY THE
ILLINOIS CENTRAL RAILROAD
TENN.-MISS. STATE LINE TO JACKSON
 STATION 5336+10 TO STATION 5400+54
 M. P. C-491 TO M. P. C-486
 SCALE: 1 IN. = 300 FT.
 JUNE 30, 1915
 REV. DEC. 31, 1927
 OFFICE OF CHIEF ENGINEER
 CHICAGO, ILL.

035-034

1-TENN
12