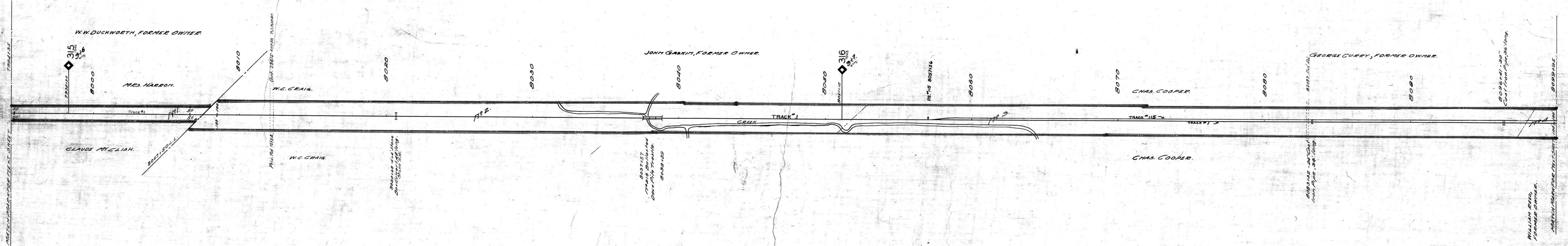
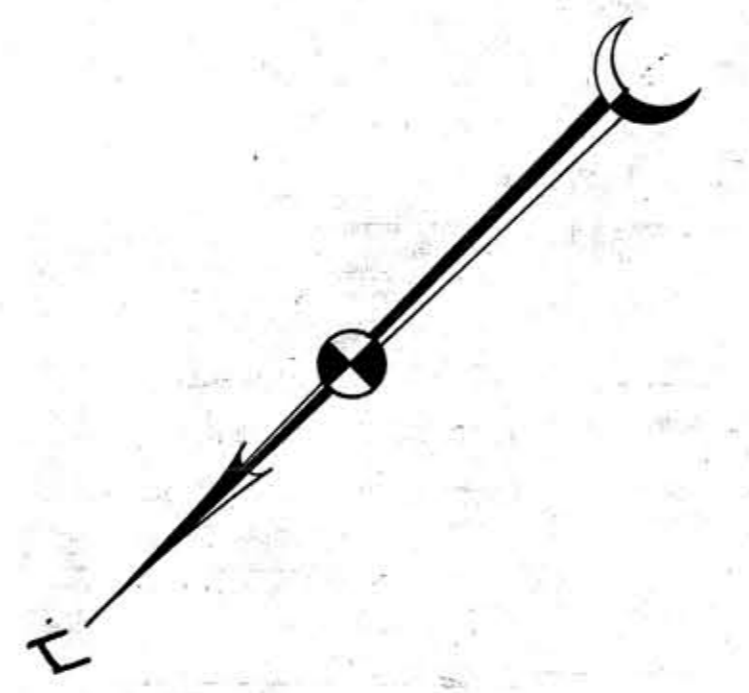


A.F.E. No. 3373, 4846, 60736
 Date Completed 1-12-23, 6-9-67
 Description of Change Renewal of track # 210, CONST. OF R/W FENCE, MILES 3/7 & 3/10, Const. Passing T.R. # 115 (2400)



Fence on north side Sta. 7994+35 to 8020+30, 8037+37 to 8039+25, and on south side 7994+35 to 8007+20, 8037+37 to 8039+35.
 CONST. SUB. JUNE 30, 1917.
 Fence on south side from Sta. 7997+87 to 8052+40, 8081+16 to 8083+05 A.F.E. 1846.
 Fence on north side from Sta. 8034+10 to 8077+70, 8080+19 to 8087+27 A.F.E. 1846.
 Fence on south side from Sta. 8080+10 to 8088+25 23' 0" of 11' Cont. 34138 Albert A. Dixon



Sheet No 77 of 111 of Memphis Line from Survey Station 7994+35 to survey station 8099+95
 Valuation Engineer

RIGHT OF WAY AND TRACK MAP
 LOUISVILLE AND NASHVILLE R. R. CO.
 MEMPHIS LINE
 STATION 7994+35 TO STATION 8099+95
 SCALE 1 INCH = 200 FT.
 OFFICE OF CHIEF ENGINEER
 LOUISVILLE, KY.