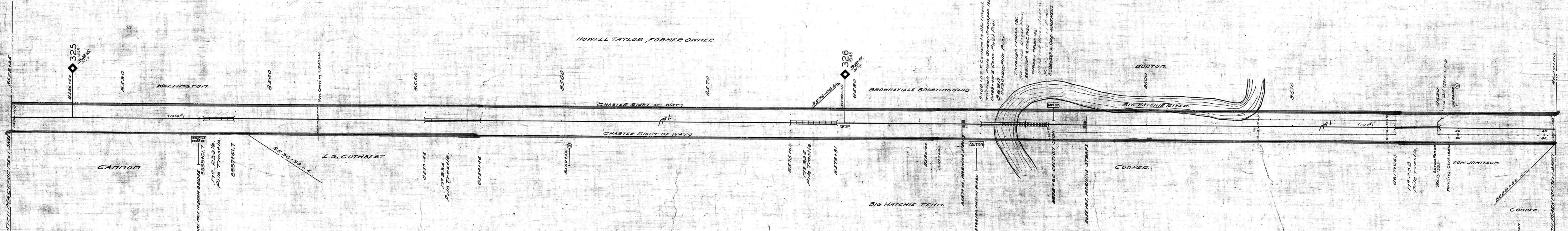


A.F.E. No.	Date Completed	Description of Change
3910	9-17-23	Rebuilding trestle # 233 1/2
3758	9-18-23	" " " " " " " "
3407	" " " "	" " " " " " " "
550A	6-30-24	CONST. OF AIR FORCE MILES 327-328
21038	5-27-40	Const. of 2nd class house 1012' 3/4" 858480
31225	3-15-43	Rel. of 10'x8' cinder Platform. Big Hatchie
33627	9-14-52	"One mile to water sta." sign rem.
41955	10-8-53	Rebuild Bridge #238
		Rebuild Bridge #233 1/2



Fence Notes.
 Fence on south side, Sta. 8522+35 to 8550+65.
 Fence 30' south of, Sta. 8607+06 to 8617+08. Cont. 20065-10-4-23 F.J. Blackwell
 Fence 30' north of, Sta. 8593+09 to 8617+06
 Fence 30' south side, Sta. 8508+14 to 8534+03 A.F.E. 5407
 Fence 30' north side, Sta. 8524+50 to 8533+53 A.F.E. 5407
 Fence 30' both sides, Sta. 8537+58 to 8550+65 A.F.E. 5407
 Fence 30' both sides, Sta. 8534+46 to 8575+65 A.F.E. 5407
 Fence 30' both sides, Sta. 8578+71 to 8588+59 A.F.E. 5407.

Cont. 51880 3-3-45 Cary Middlecoff - Private road Crossing 8542+40

Sheet No 82 of 111 of Memphis Line from survey station
 8522+35 to survey station 8627+95
 Valuation Engineer

RIGHT OF WAY AND TRACK MAP
LOUISVILLE AND NASHVILLE R. R. CO.
MEMPHIS LINE
 STATION 8522+35 TO STATION 8627+95
 SCALE 1 INCH = 200 FT.
 OFFICE OF CHIEF ENGINEER
 LOUISVILLE, KY.

038-010

