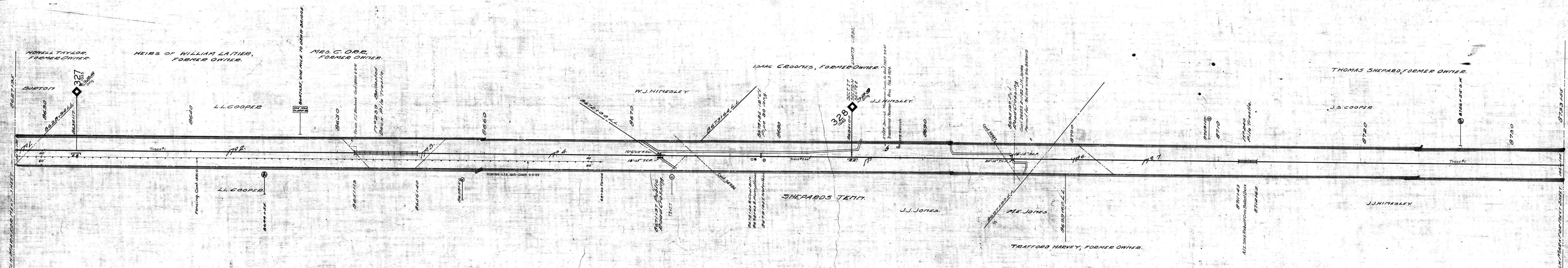


A.F.E. No.	DATE COMP.	DESCRIPTION OF CHANGE
1808	9-5-22	CONST. RAMP FENCE MILE 329
3015		RE-BUILDING OF RAMP
3725	3-15-25	CONST. RAMP FENCE MILES 329-330
4232	5-5-23	"ONE MILE TO WATER STA. SIGN REM.
43313	4-23-24	TRUCK #266 & #267 RETIRED
43415	1928	REBUILT BRIDGE #260
47461	3-23-26	WALKWAY FOR ENLARGED TR. 52000 TO 53,600 TR. S.
48818	4-15-27	EST. MAIL CRANE EST. SCREENING PLATFORM AT STA. 8666+50.



Fence on north side, sta. 8672+00 to 8695+25.
 Fence on Left Side, sta. 8674+32 to 8691+31.
 Fence on Left Side, sta. 8694+40 to 8698+00.
 Fence on Both Sides, sta. 8702+39 to 8711+43.
 Fence on Both Sides, sta. 8712+05 to 8719+12. } A.F.E. 5793

Cont. 21280 11-23-21 Gray Caldwell Log derrick on Toy Station 8628+27
 Cont. 35184 11-24-21 Memphis Veneer Co. Log loading derrick Sta. 8686+30
 L.F. 27767-36986 11-17-23 Southwest Tennessee Electric Membership Corp. Wiring at Sta. 8674+40
 " 36987 11-17-23 " " " " " " 8695+50

Sheet 1983 of 111 of Memphis Line from survey station
 8627+95 to survey station 8733+55
 Valuation Engineer

RIGHT OF WAY AND TRACK MAP
 LOUISVILLE AND NASHVILLE R. R. CO.
 MEMPHIS LINE
 STATION 8627+95 TO STATION 8733+55
 SCALE 1 INCH = 200 FT.
 OFFICE OF CHIEF ENGINEER
 LOUISVILLE, KY.

25-83

HAYWOOD COUNTY, TENN.

038-011

125
 83