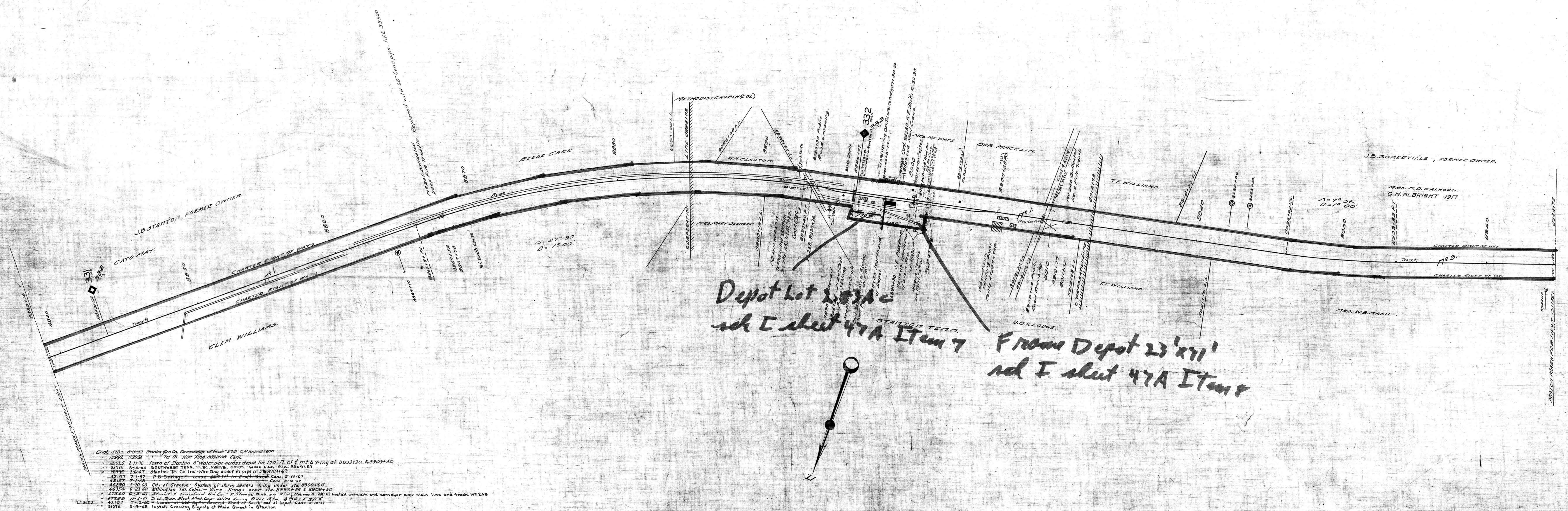


A.F.E. No.	DATE COMP.	DESCRIPTION OF CHANGE
547		CONST. OF RAIL FENCE NUES 332-333
421		" " " " 333-334
13201	9-30-29	Rel. of main order signal
33330	12-13-35	Replace Br 265 with 60" Conc. Pipe
43833	4-14-58	Rel. station house - No. 82123
44433	9-29-55	Rel. seat house and platform at Stanton, Tenn.
49007	10-23-56	Rel. seat house, Sta. 8899+80
48848	8-13-57	Rel. screening platform Sta. 8896+57.
50567	11-26-58	Rel. Trk #269 & Part of Trk #268
51286	5-17-59	Frame Tool House, Sta. 8902+95
52465	2-19-60	Rel. 30' Station Platform
52623	3-11-64	Rel. covered platform, South End Depot Between V.S. 8893+80 & V.S. 8895+80
58066	4-26-65	Install Crossing Signals at Main St. in Stanton
60563	10-31-67	Rel. Trk # 270 - 265'S including 1N870.



- Cont. #128 6-19-33 Stanton Gin Co. Ownership of track #270 C.P. from 1800
- 12992 1-30-31 Tel. Co. Wire Xing 8899+80 Curc
- 23885 2-11-36 Town of Stanton 6" Water pipe across depot lot 170' R. of E. Mt. & X-ing at 8893+30 & 8903+40
- 31112 8-16-40 SOUTHWEST TENN. ELEC. MEMPH. CORP. WIRE XING STA. 8909+57
- 40992 2-24-41 Stanton Tel. Co. Inc. Wire Xing under in pipe of 28 8901+64
- 42167 7-1-52 P.O. Springer lease 660 ft. in Fruit Shed Can. 5-10-47
- 44167 7-1-52 Can. 8-10-47
- 46490 5-20-60 City of Stanton - System of storm sewers X-ing under Sta. 8900+60
- 46358 6-23-60 Millington Tel. Co. - Wire X-ing over Sta. 8892+86 & 8909+50
- 47340 6-23-61 Stuart & Crawford Gin Co. - 2 Storage Bins on R/W; Main 4-28-67 install outside and conveyor over main line and track NS 248
- 47789 11-1-61 3' Sub. from Elmer Mae Corp. Cable X-ing Over Sta. 8901+37 & 8901+38
- 49167 7-22-62 Lease of 660 sq. ft. covered shed at South end of depot. Cont. 5-10-47
- 51076 5-4-65 Install Crossing Signals at Main Street in Stanton

RIGHT OF WAY AND TRACK MAP
LOUISVILLE AND NASHVILLE R. R. CO.
MEMPHIS LINE
STATION 8839+15 TO STATION 8944-75
SCALE 1 INCH = 200 FT.

038-013

