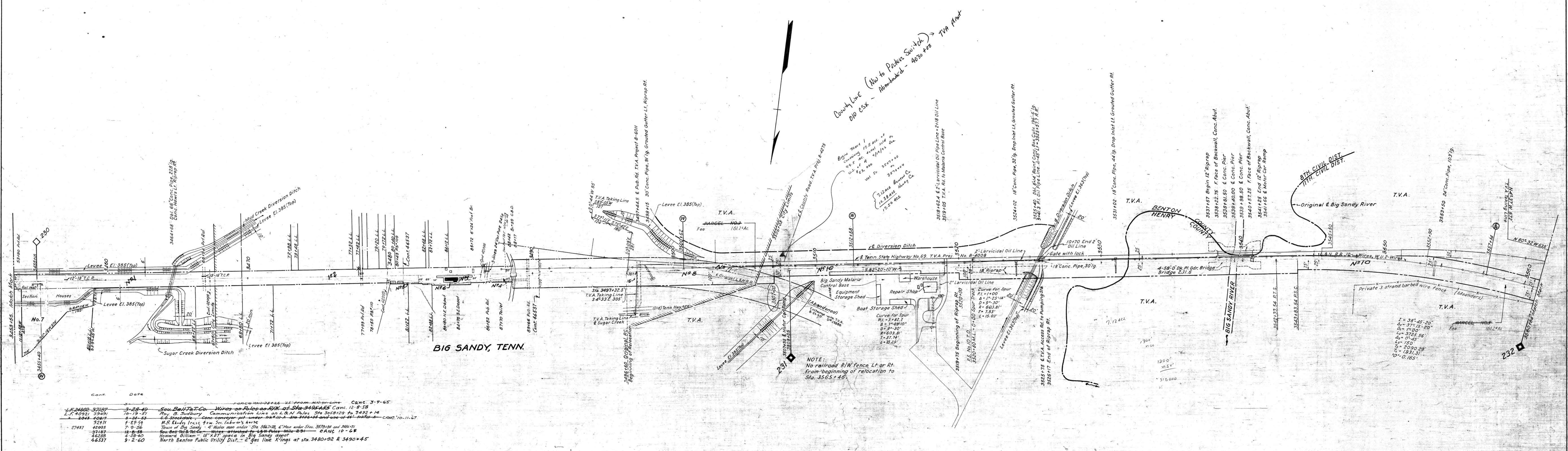


AFE	Date Comp	Description of change
34440		Line relocation due to TVA flood area
39881	11-25-51	Ret. Water Tank, Pump House, 8 405'-8" Pile
34440		Retrace sur. from 1111 and Confined from 111-A
47903	8-28-56	Ret. Foreman's house & 2 Laborer's houses
49201	10-22-57	Ret. Tool Wsh. Sta. 3451+10
60884	11-30-67	Ret. 1 40'-50" T.D. (86) & 1 40'-100" T.D. (114) and conv. 5'-46" to 111-A to 1110

PAR. No.	GRANTOR	GRANTEE	INST.	DATE	RECORD D.B.	CUST. No.	REMARKS
10	TVA	L&NRRCo.					Includes Part No. 1 V25/35; Part No. 1 V25/37; Part No. 1 V25/38; Part No. 6 V25/37
11							U.S. Charter width not allowed in inventory but now used for RR purposes



Cont.	Date	Description
L.F. 24802	3-28-49	Sou. Bell Tel. Co. Wires on Poles on R/W. of Sta. 3453+55 Canc. 3-9-65
L.F. 40921	10-19-57	Roy B. Judburn Communication Line on L&N Poles Sta. 3458+28 to 3492+14
2043	8-24-53	E. S. Stokely Conc. conveyer belt under 1111-A Sta. 3466+44 and use of 111-A
32411	1-29-54	M.R. Kelly Lease from Sou. Laborer's house
27487	4-20-56	Town of Big Sandy 4" Water main under Sta. 3467+28, 6" Main under Sta. 3479+08 and 3484+51
32182	12-8-58	Sou. Bell Tel. Co. Wires attached to 1111-A Poles - 1111-A-231 - C&M 10-6-58
46280	4-18-60	Howard Gilliam 15' x 27' space in Big Sandy depot
46537	9-2-60	North Benton Public Utility Dist. - 2" gas line Kings at sta. 3480+92 & 3490+45

**TRACK ABANDONED A.F.E. 75746
1982**

RIGHT OF WAY AND TRACK MAP
LOUISVILLE AND NASHVILLE R. R. CO.
MEMPHIS LINE
STATION 3453+55 TO STATION 3560+84
SCALE 1 INCH=200 FT
OFFICE OF CHIEF ENGINEER
LOUISVILLE, KY