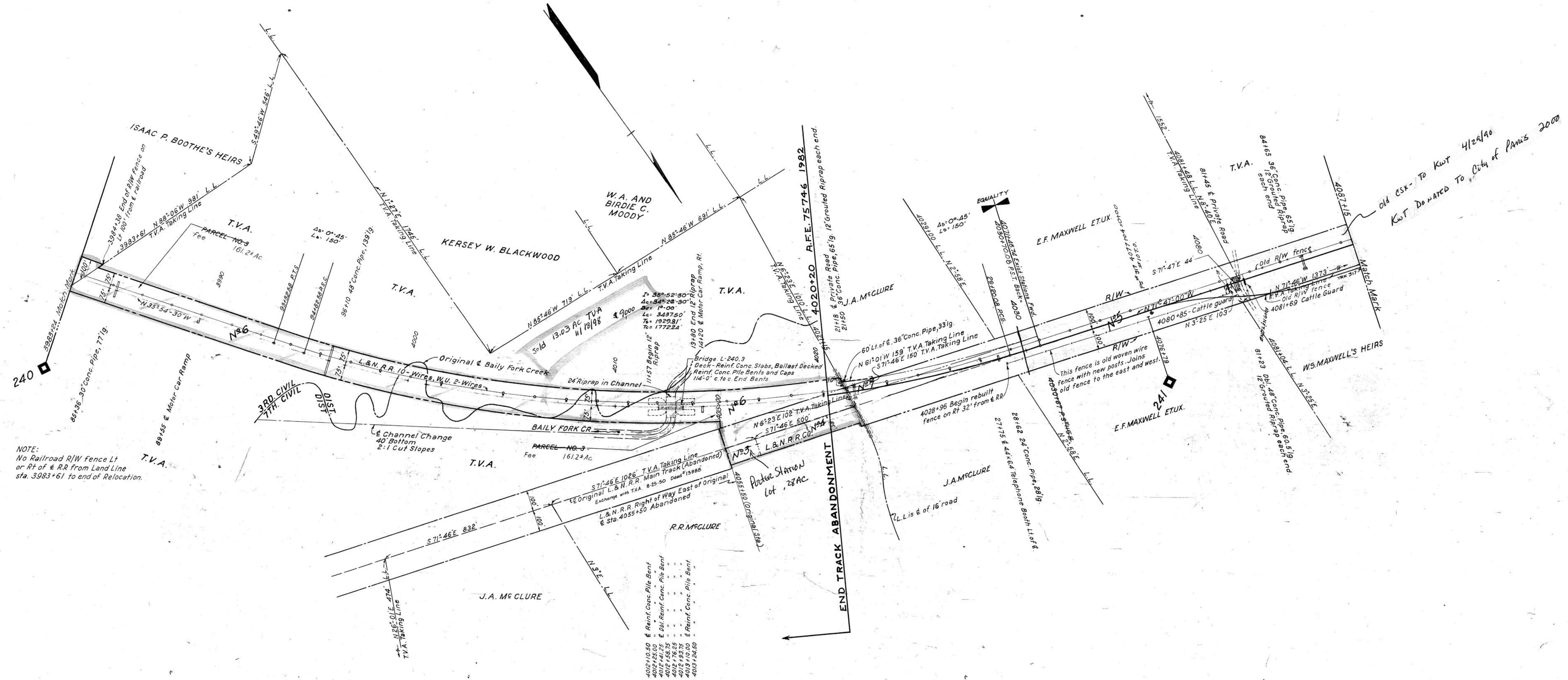


A.F.E.	Date Comp	Description of Change
31440		Relocation of Tracks due to TVA flood area
46018	6-15-57	Ret. Screening plat form sta. # 4015+70.
51175	6-30-59	" Trk. #115-B
62077	10-15-60	Const. Trk. #317 Sta. 4077+04

Par	Grantor	Grantee	Instr.	Date	Record	Custn No.	Remarks
6	TVA	LANKR Co.					Land to replace that to be flooded
7	U.S. Charter						Charter with not allowed in Inv. but now used for R.R. purposes



**TRACK ABANDONED A.F.E. 75746  
1982**

RIGHT OF WAY AND TRACK MAP  
LOUISVILLE AND NASHVILLE R. R. CO.  
MEMPHIS LINE  
STATION 3983+24 TO STATION 4087+15  
SCALE 1 INCH = 200 FT  
OFFICE OF CHIEF ENGINEER  
LOUISVILLE, KY