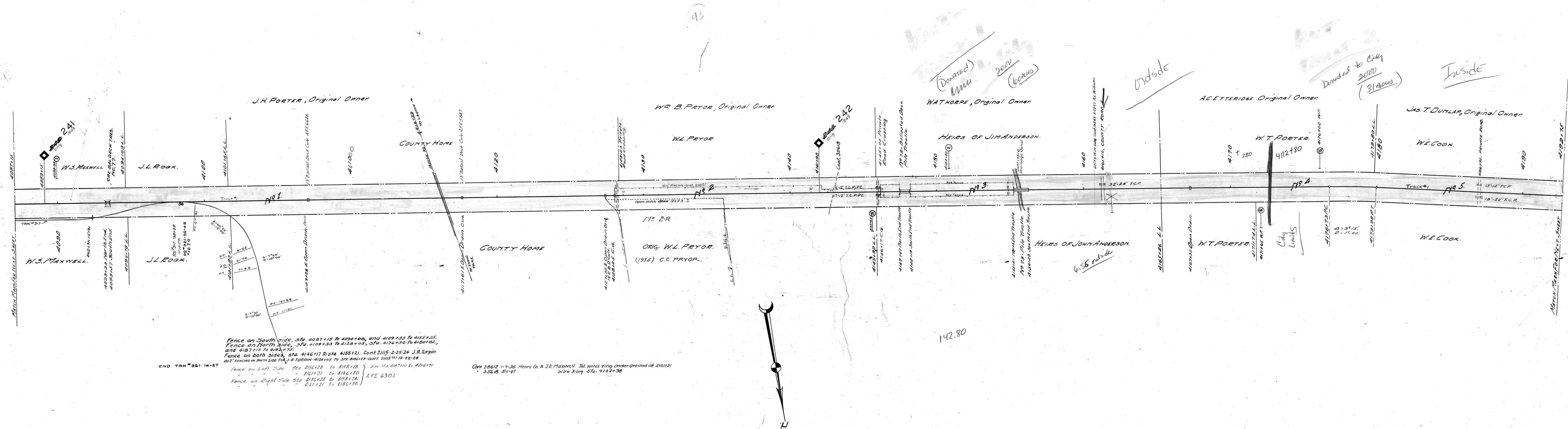


A.F.E. No	Date Completed	Description of Change
808	3-3-27	Reconstruction of bridge #78
6649	2-5-26	Rebuilding overhead Sta. 407108 with 13" B.D. 7-as 1/4
6301	1-28-26	Const of RR fence - see Fence note
5847	2-24-25	Rebuilding Open drain Sta. 411740 with 15" B.D. 7-trails
7739	1-25-27	Rebuilding Sta. 77
10525	9-29-28	" " " 77
27038	5-27-40	Rel. of Single Passenger Platform
31175	6-30-39	of TRK #115-B
42077	10-18-68	Const. TRK #37 Sta. 4098+38

No.	Grantor	Grantee	Instr.	Date	Record	Cost No.	A.F.E.	Rem.
2-R	C.C. Pryor	L.M.N.	Deed	1-21-35	B-34 P-189 1, 21-35	13253		OVERFLOW.

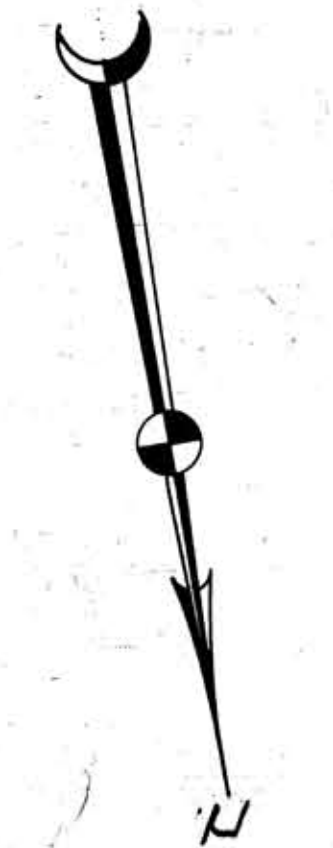


Fence on South side, Sta. 4087+15 to 4094+00, and 4109+33 to 4155+25.  
 Fence on North side, Sta. 4109+33 to 4128+00, Sta. 4176+30 to 4180+02,  
 and 4187+10 to 4192+75.  
 Fence on both sides, Sta. 4146+17 to Sta. 4155+21. Cont. 2115-225-24 J.R. Turpin  
 1812' FENCING ON SOUTH SIDE FOR J.R. TURPIN - 1128+05 TO STA. 4146+17 - CONT. 2115-110-22-24

END TRK #321 1A-2T

Fence on Left Side Sta. 4156+28 to 4158+28. use Sta. 4187+00 & 4206+71  
 = 4161+21 to 4186+00.  
 Fence on Right Side Sta. 4156+28 to 4158+28. A.F.E. 6301.  
 = 4161+21 to 4186+00.

Cont. 28612 1-7-36 Henry Co. & J.E. Maxwell Tel. wires lying underground at 4161+31  
 33618 5-1-47 Wire Xing Sta. 4142+38



HENRY COUNTY, TENN.

Sheet No. 40 of 111 of Memphis Line from survey station  
 4087+15 to survey station 4192+75  
 Valuation Engineer

RIGHT OF WAY AND TRACK MAP  
 LOUISVILLE AND NASHVILLE R. R. CO.  
 MEMPHIS LINE  
 STATION 4087+15 TO STATION 4192+75  
 SCALE 1 INCH = 200 FT.  
 OFFICE OF CHIEF ENGINEER  
 LOUISVILLE, KY.

040-007

WES  
40

43