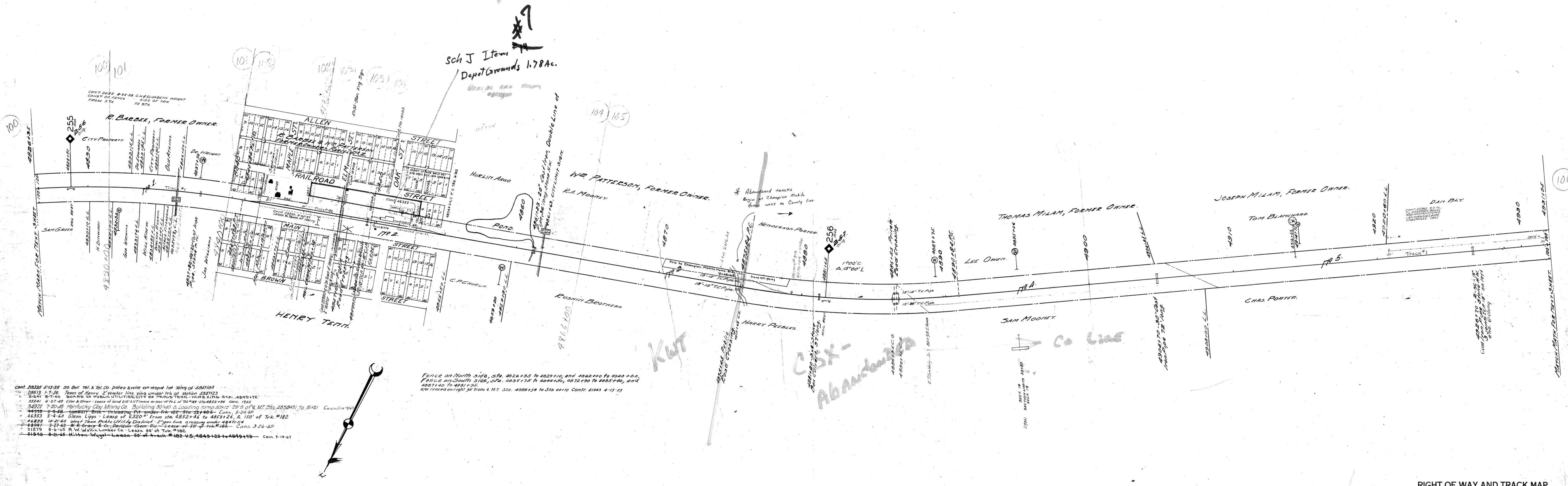


A.F.E. No.	Date Completed	Description of Change
4026	7-14-23	Cont'd of Section house Sta. 482+89
1104	7-11-21	Cont. Walk
21705	4-2-37	Sold pt. par. 2 Sec. No. Lot
23299	11-12-37	Ret. 12'x16' Foot Ho. - installed at Paris
31291	8-3-45	Ret. Sign Post
42124	3-21-52	Ret. all trk. #183 & 1352.5' trk. #182
16700	1932	Ret. 2nd 'Gate' at Paris
40818	5-15-57	Ret. Screening platform Sta. 4846+12
51878	10-21-59	Ret. Combination Passenger & Fr. Dept. Sta. 4843+22



- Cont. 29325 5-13-35 30 Bell Tel. & Tel. Co. poles & wire on a part lot 10 of 1811193
- 28613 1-7-36 Town of Henry 2' water line xing under trk of station 287123
- 31647 8-7-40 BOARD OF PUBLIC UTILITIES CITY OF PARIS TENN. - WIRE LINES STR. 4849+72
- 35241 6-27-45 Eller & Olson - Lease of land 210 x 117' more or less 10' to L of 74' 1/2' 516 4852+96 Cont. 1944
- 34972 7-20-46 Kentucky Clay Mining Co. Building 30'x40' & Loading ramp 50'x12' 29' S of 4. MT. Sta. 4850+31 to 5121 Canceled 1947
- 44990 5-3-48 Lambert Bros. - Unloading pt. under trk 182 - Sta. 4851+45 - Cont. 5-24-40
- 46383 5-4-40 Glenn Lipp - Lease of 4320' from Sta. 4852+46 to 4853+26 & 150' of Trk. #182
- 46833 12-21-60 West Tenn. Pub. Utility Dist. - Sign line crossing under 4847+54
- 48041 3-27-62 W.R. Grace & Co. Davidson Chem. Div. - Lease of 50' of Trk. #182 - Cont. 3-26-65
- 51279 8-6-55 R.W. Wain Lumber Co. - Lease of 50' of Trk. #182
- 61340 8-21-65 Wain Wagon Lease - 50' of track #182 - V.S. 4843+23 to 4849+73 - Cont. 9-10-67

Fence on North side, Sta. 4826+35 to 4829+10, and 4862+00 to 4920+00.
 Fence on South side, Sta. 4835+75 to 4844+50, 4872+90 to 4885+40, and
 4887+40 to 4931+55.
 NW fenced on right 50' from N. E. Sta. 4886+50 to Sta. 4910 Cont'd. 2193 4-15-25

RIGHT OF WAY AND TRACK MAP
 LOUISVILLE AND NASHVILLE R. R. CO.
 MEMPHIS LINE
 STATION 4826+35 TO STATION 4931+95
 SCALE 1 INCH = 200 FT.
 OFFICE OF CHIEF ENGINEER
 LOUISVILLE, KY.

Sheet 47 of 111 of Memphis Line from survey station
 4826+35 to survey station 4931+95
 Valuation Engineer

040-016
 V.25
 47