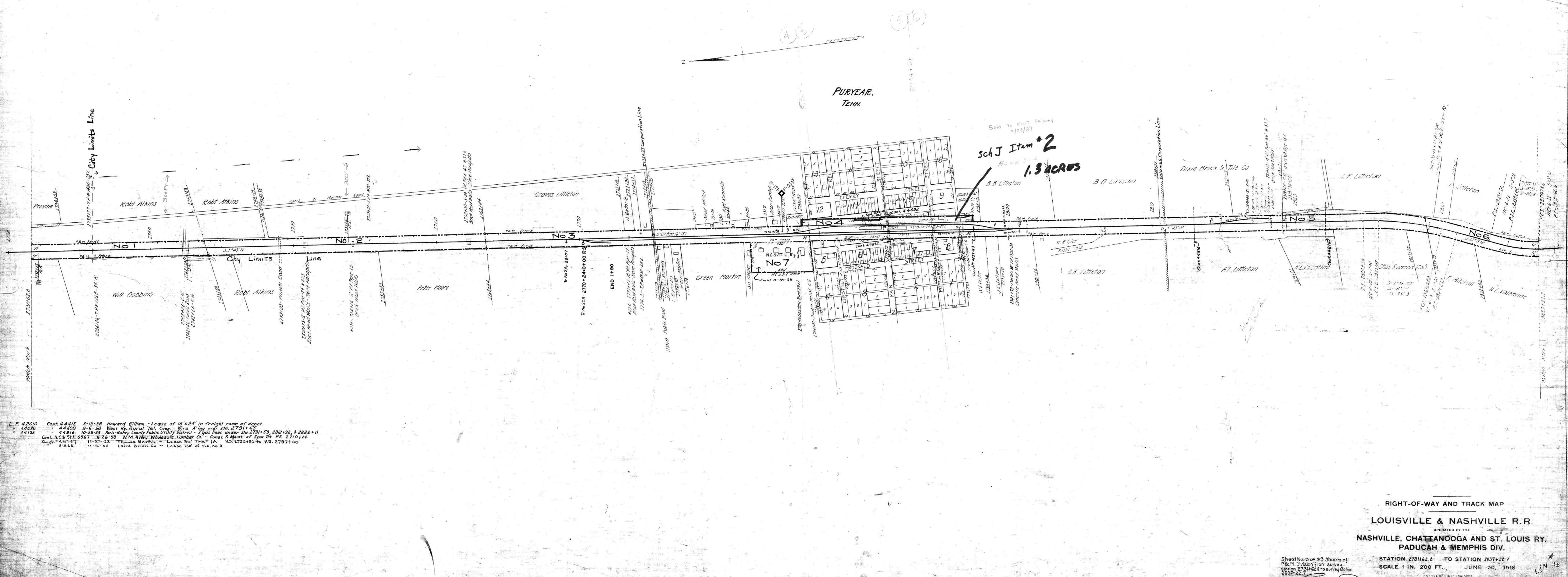


NO.	GRANTOR	GRANTEE	INSTRUMENT	DATE	RECORD	SHEET NO.	REMARKS
1	J.P. Witt	P.T. & A.R.R. Co.	Deed	Aug. 21, 1890	DB 2-784-Oct. 9, 1890	2150	
2	J.B. Atkins	P.T. & A.R.R. Co.	Deed	Sept. 20, 1890	DB 2-794-Oct. 9, 1890	2164	
3	Elizabeth Stagner et al	P.T. & A.R.R. Co.	Deed	Sept. 22, 1890	DB 2-758-Oct. 3, 1890	2130	
4	J.T. Littleton	P.T. & A.R.R. Co.	Deed	Aug. 28, 1890	DB 2-766-Oct. 8, 1890	2144	
5	J.B. Littleton	P.T. & A.R.R. Co.	Deed	Aug. 25, 1890	DB 2-751-Oct. 8, 1890	2152	
	J.B. Littleton	P.T. & A.R.R. Co.	Deed	Mar. 10, 1891	DB 1-193-Mar. 12, 1891	2152-A	
	I.F. Littleton	P.T. & A.R.R. Co.	Deed	Aug. 25, 1890	DB 2-773-Oct. 7, 1890	2143	Release from conditions deed 2152 and settlement of suit.

Also see deed 1833 J.W. Phillips to Louisville & Nashville Railroad Co. dated Dec. 14, 1895, Recorded DB 4- page 502.



L.F. 42610 Cont. 44415 5-13-58 Howard Gilliam - Lease of 15'x24' in freight room of depot.  
 44088 44699 9-6-58 West Ky. Rural Tel. Coop. - Wire X'ing over sta. 2791+65  
 44138 44816 10-28-58 Paris-Henry County Public Utility District - 3 gas lines under sta. 2791+59, 2812+92, & 2822+11  
 Cont. N.C. & S.L. 6567 11-26-58 W.M. Avery Wholesale Lumber Co. - Const. & Maint. of Spur Trk. P.S. 2710+24  
 Cont. 45747 11-27-58 Thomas Brutton - Lease 50' Trk. 1A 25' 2794+50 to V.S. 2797+00  
 51826 11-2-58 Laird Brick Co. - Lease 150' of trk. no. 3

RIGHT-OF-WAY AND TRACK MAP  
 LOUISVILLE & NASHVILLE R.R.  
 OPERATED BY THE  
 NASHVILLE, CHATTANOOGA AND ST. LOUIS RY.  
 PADUCAH & MEMPHIS DIV.

Sheet No. 3 of 93 Sheets of  
 P.B.M. Division from survey  
 Station 2731+62.2 to survey station  
 2837+22  
 STATION 2731+62.2 TO STATION 2837+22.7  
 SCALE, 1 IN. = 200 FT. JUNE 30, 1916  
 OFFICE OF CHIEF ENGINEER  
 NASHVILLE, TENN.  
 M.P. 52.0 to 54.0