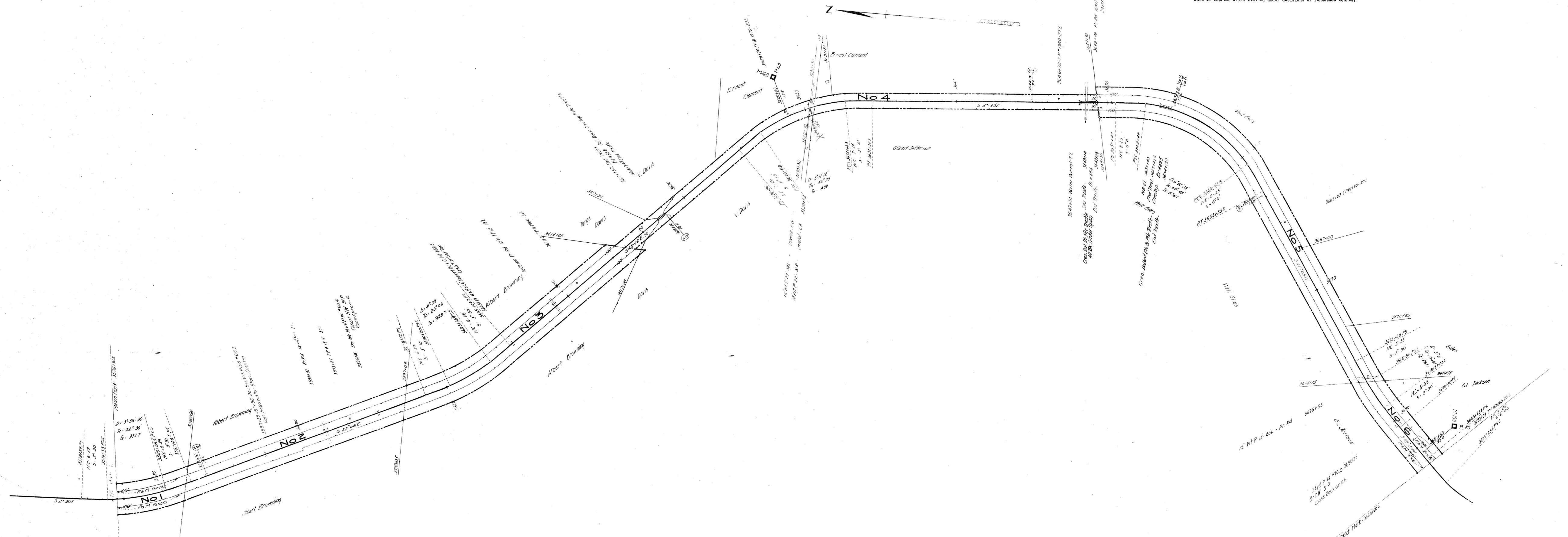


NO.	GRANTOR	GRANTEE	INSTRUMENT	DATE	RECORD	CUST. NO.	REMARKS
1	Wm. J. Wagon	P.T. & A.R.R. Co.	None	About 1891			Note 1
2	-----Lankford	P.T. & A.R.R. Co.	None	About 1891			Note 1
3	Jan. Bower	P.T. & A.R.R. Co.	None	About 1891			Note 1
4	D. L. Martin	P.T. & A.R.R. Co.	Condemnation	Oct. 26, 1892	OB R-330-Chancery Court	2221	Note 1
5	G. H. Giline	P.T. & A.R.R. Co.	None	About 1891			Note 1
6	R. J. Dunn Weira	P.T. & A.R.R. Co.	None	About 1891			Note 1

Also see deed 1893 J.W. Phillips to Louisville & Nashville Railroad Co. dated December 14, 1895, Recorded DB 4-page 502.  
NOTE 1- Charter width claimed under decisions of Tennessee Courts.



RIGHT-OF-WAY AND TRACK MAP

LOUISVILLE & NASHVILLE R.R.  
OPERATED BY THE  
NASHVILLE, CHATTANOOGA AND ST. LOUIS RY.  
PADUCAH & MEMPHIS DIV.

STATION 3576+96.8 TO STATION 3683+60.4  
SCALE, 1 IN. = 200 FT. JUNE 30, 1916

OFFICE OF CHIEF ENGINEER  
NASHVILLE, TENN.  
M.P. 68.0 to 70.0

Sheet No. 11 of 93 Sheets of  
P & M Division from survey  
station 3576+96.8 to survey  
station 3683+60.4  
E. J. [Signature]  
Division Engineer