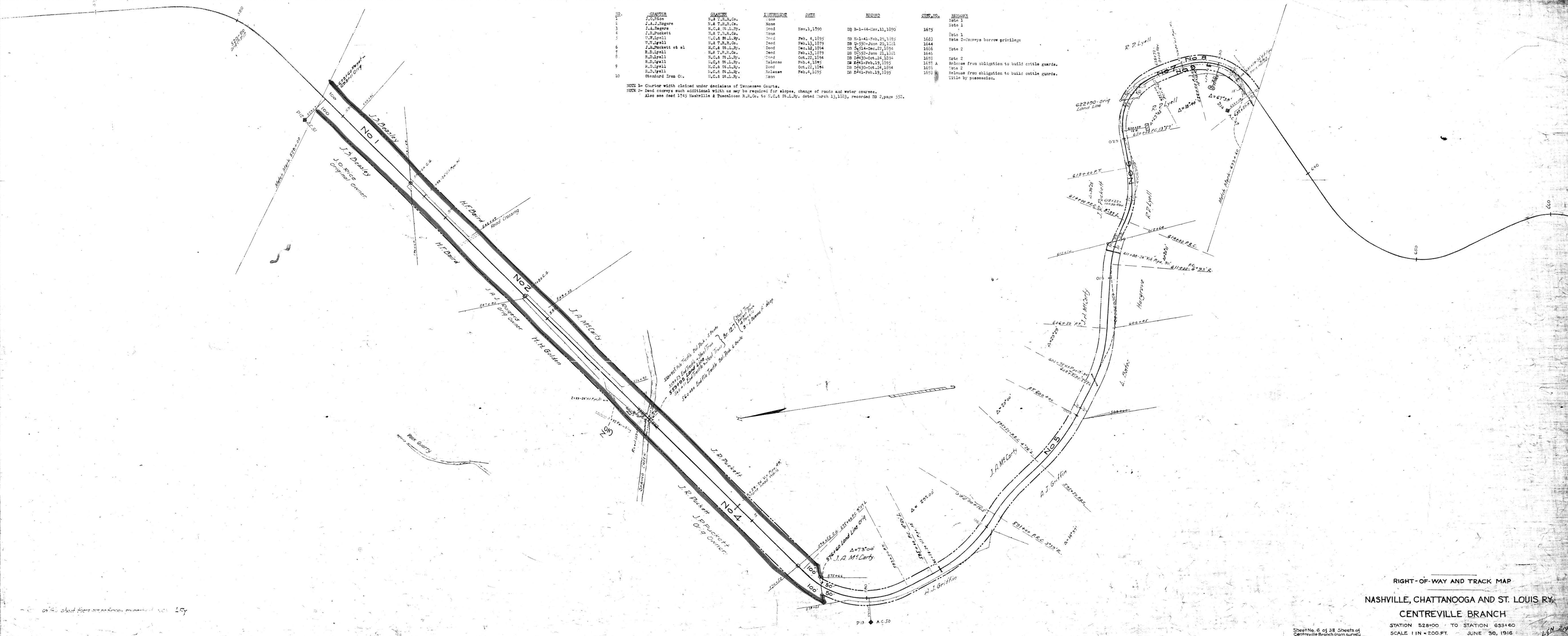


NO.	GRANTOR	GRANTEE	INSTRUMENT	DATE	RECORD	CURT. NO.	REMARKS	
1	J.O. Rice	N.C. & St. L. Ry.	None				Note 1	
2	J.A. Rogers	N.C. & St. L. Ry.	None			1675	Note 1	
3	J.A. Rogers	N.C. & St. L. Ry.	Deed	Nov. 1, 1890	DB B-1-44-Nov. 11, 1890			
4	J.R. Puckett	N.C. & St. L. Ry.	None				Note 1	
5	W.W. Lyell	N.C. & St. L. Ry.	Deed	Feb. 4, 1895	DB B-1-41-Feb. 20, 1895	1683	Note 2-Conveys borrow privilege	
6	W.W. Lyell	N.C. & St. L. Ry.	Deed	Feb. 13, 1879	DB U-55-June 29, 1891	1684		
7	J.R. Puckett et al	N.C. & St. L. Ry.	Deed	Dec. 12, 1894	DB U-34-Dec. 29, 1894	1686		
8	R.D. Lyell	N.C. & St. L. Ry.	Deed	Feb. 13, 1879	DB U-55-June 21, 1891	1686	Note 2	
9	R.D. Lyell	N.C. & St. L. Ry.	Deed	Oct. 22, 1894	DB D-430-Oct. 22, 1894	1678	Note 2	
10	R.D. Lyell	N.C. & St. L. Ry.	Deed	Feb. 4, 1895	DB D-41-Feb. 19, 1895	1675 A	Note 2	
	Standard Iron Co.	N.C. & St. L. Ry.	Release	Feb. 4, 1895	DB D-430-Oct. 24, 1894	1676	Note 2	
							1678 A	Release from obligation to build cattle guards. Title by possession.

NOTE 1- Curvature width claimed under decisions of Tennessee Courts.
 NOTE 2- Dead conveyances such additional width as may be required for slopes, change of route and water courses.
 Also see deed 1745 Nashville & Ducktown R.R. Co. to N.C. & St. L. Ry. dated March 13, 1893, recorded DB 2, page 552.



on 740 about here curve on former property of No. 1 Ry.

HICKMAN CO. TENN.

041-003

Sheet No. 6 of 38 Sheets of
 Centreville Branch from survey
 station 528+00 to station 630+00
 630+00
 Evolution Engineer

RIGHT-OF-WAY AND TRACK MAP
 NASHVILLE, CHATTANOOGA AND ST. LOUIS RY.
 CENTREVILLE BRANCH
 STATION 528+00 TO STATION 630+00
 SCALE 1 IN = 200 FT. JUNE 30, 1916
 OFFICE OF CHIEF ENGINEER
 NASHVILLE, TENN.
 M.P. 120 to 140

LEN 219
 V. 13
 6