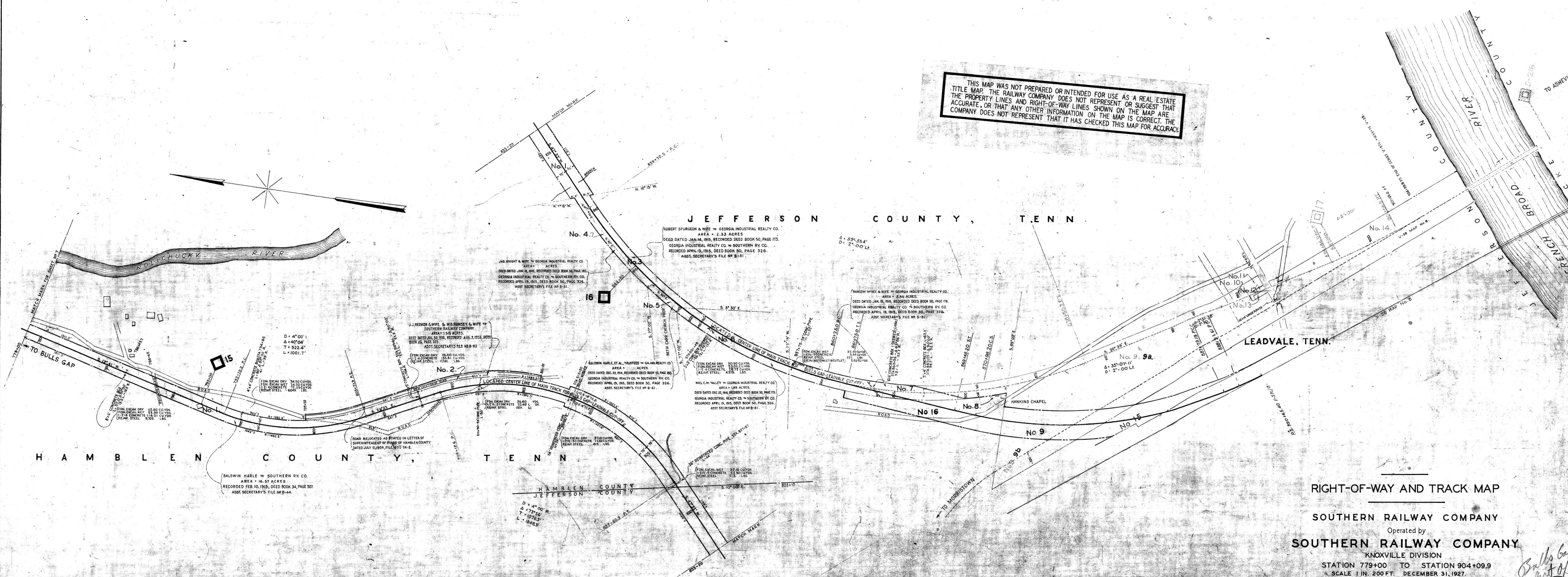


THIS MAP WAS NOT PREPARED OR INTENDED FOR USE AS A REAL ESTATE TITLE MAP. THE RAILWAY COMPANY DOES NOT REPRESENT OR SUGGEST THAT THE PROPERTY LINES AND RIGHT-OF-WAY LINES SHOWN ON THE MAP ARE ACCURATE, OR THAT ANY OTHER INFORMATION ON THE MAP IS CORRECT. THE COMPANY DOES NOT REPRESENT THAT IT HAS CHECKED THIS MAP FOR ACCURACY.



JEFFERSON COUNTY, TENN

HAMBLEN COUNTY, TENN

LEADVALE, TENN.

RIGHT-OF-WAY AND TRACK MAP

SOUTHERN RAILWAY COMPANY

Operated by

SOUTHERN RAILWAY COMPANY

KNOXVILLE DIVISION

STATION 779+00 TO STATION 904+09.9

SCALE 1 IN. = 200 FT. DECEMBER 31, 1927.

Office of Special Engineer
Washington, D. C.

NOTE: BULLS GAP - LEADVALE CUT-OFF CONSTRUCTED - AFE 19256 (3-1-26)

045-007

Bulls Gap cut off
V-57c
8

STATIONING REFERS TO CONST. DEPT. CHAINAGE - 1926