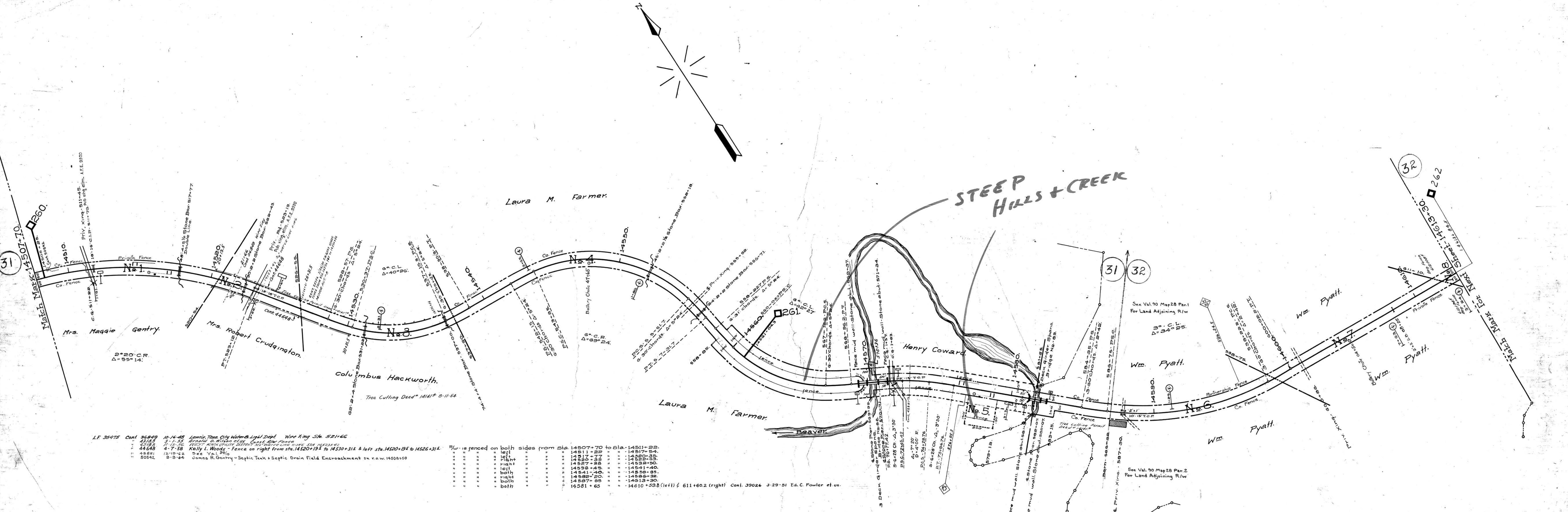


A.F.E. No.	Date	Comp.	Description of Change
9920	11-29-27		Elimination of Pub. Road Xing
17403	11-13-33		Part of 4 Corners Conceded East to Squatters 2.59A
21022	11-13-31		Part of Sold to G.H. Coward Deed N.L. 2-1-302
			Const of R/W Fence both sides Sta. 14501+65 to 14610+59.8 (left) & 14611+60.2



LF 35475 Cont	36849	10-16-48	Lenoir, Tenn. City Water & Light Dept.	Wire Xing Sta. 5211+66					
42183	7-1-53		Ronald D. Wilson et al.	East, New Fence					
44648	4-7-58		Kelly L. Woods	Fence on right from sta. 14520+19 1/2 to 14530+31 1/2 & left sta. 14520+19 1/2 to 14526+31 1/2					
44891	12-10-52		See Val. 90						
50542	8-8-64		James R. Gentry	Septic Tank & Septic Drain Field Encroachment on r.o.w. 14508+50					

Sta.	Side	From Sta.	To Sta.	Notes
14507+70	both	14507+70	14511+22	Cont. 39026 3-29-51 Ed. C. Fowler et al.
14511+22	left	14511+22	14517+54	
14517+54	right	14517+54	14520+35	
14520+35	right	14520+35	14527+28	
14527+28	left	14527+28	14541+40	
14541+40	both	14541+40	14558+95	
14558+95	right	14558+95	14586+92	
14586+92	both	14586+92	14613+30	
14581+65	both	14610+59.8 (left) & 611+60.2 (right)	Cont. 39026 3-29-51 Ed. C. Fowler et al.	

RIGHT OF WAY AND TRACK MAP
 LOUISVILLE AND NASHVILLE R. R. CO.
 KNOXVILLE DIVISION
 STATION 14507+70 TO STATION 14613+30
 SCALE: 1 INCH = 200 FT. JUNE 30 1917.

047-003

