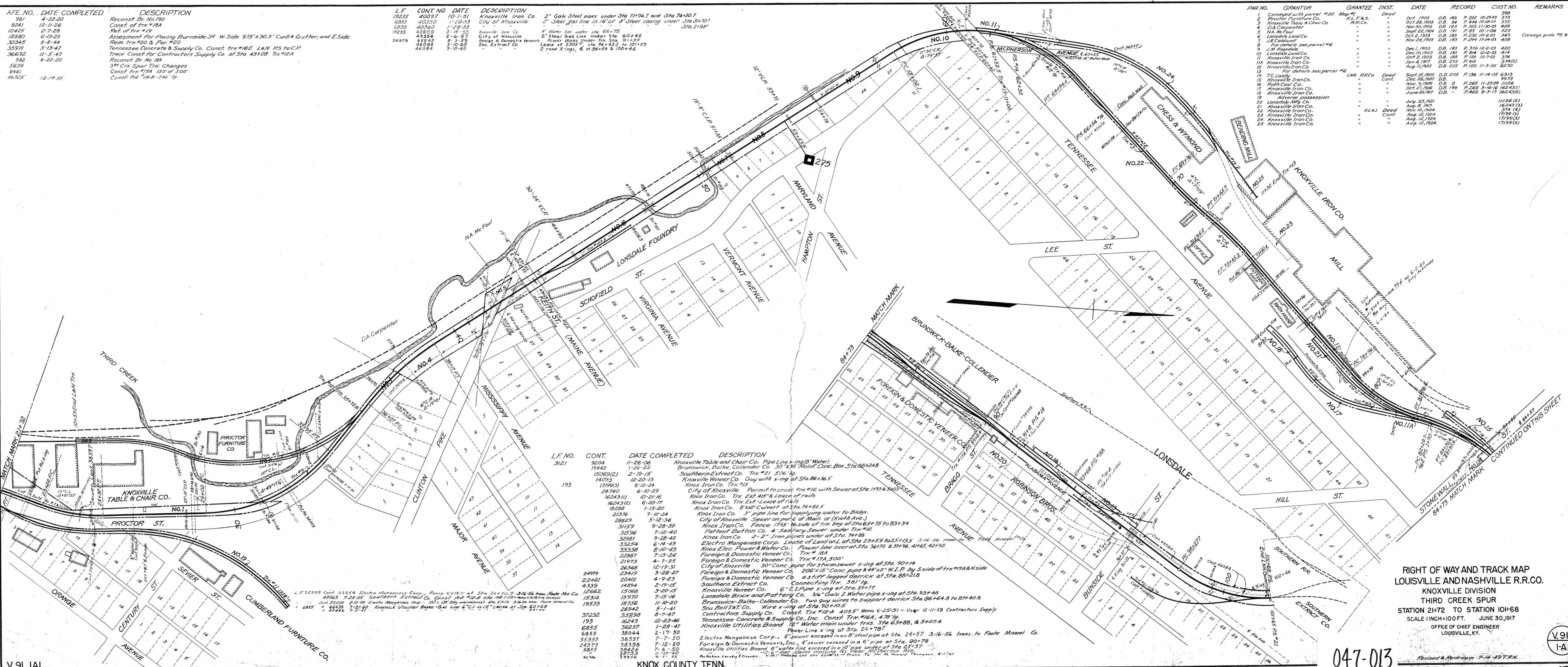


AFE. NO.	DATE COMPLETED	DESCRIPTION
981	4-22-20	Reconst. Br. No. 190
8241	12-11-26	Const. of Trk. #18A
10425	2-7-28	Ref. of Trk. #19
12880	6-19-29	Assessment for Paving Burnside St. W. Side 9.75' x 30.5' Curb & Gutter, and E. Side
32345	8-8-44	Reconst. Trk. #20 & Par. #20
35971	5-13-47	Tennessee Concrete & Supply Co. Const. Trk. #16E L.N. P.S. to C.P.
36692	11-5-47	Track Const. for Contractors Supply Co. at Sta. 43+08 Trk. #12A
982	4-22-20	Reconst. Br. No. 189
5639		3rd Crk Spur Trk. Changes
6461		Const. Trk. #17A 150' of 500'
46325	12-19-55	Const. Trk. #18A-246' 1/2'

L.F.	CONT. NO.	DATE	DESCRIPTION
19233	40097	10-1-51	Knoxville Iron Co. 2" Galv. Steel pipes under Sta 71+96.7 and Sta 76+30.7
6855	40359	1-29-53	City of Knoxville 2" Steel gas line in 16" of 8" steel casing under Sta. 34+70.7
19233	40360	1-29-53	City of Knoxville 2" Steel gas line in 16" of 8" steel casing under Sta. 2+98.1
24979	42609	2-16-55	Knoxville Iron Co. 4" Water line under Sta. 66+75
43354	2-6-57	City of Knoxville 2" Steel Gas Line Under Sta. 60+42	
45545	8-3-59	Foreign & Domestic Veneer Co. Power Lines Under Trk. Sta. 91+33	
46084	3-10-60	Sou. Extract Co. Lease of 3303' Sta. 36+43.2 to 101+59	
46084	3-10-60	Sou. Extract Co. 2" road Kings, & at 96+59 & 100+46	

PAR. NO.	GRANTOR	GRANTEE	INST.	DATE	RECORD	CUST. NO.	REMARKS
1	Conveyed with parcel #22 Map #1		Deed	Oct. 1903	D.B. 183	P. 252 10-29-03	398
2	Proctor Furniture Co.	K.L.F. & S.	"	Oct. 28, 1903	D.B. 94	P. 444 10-28-03	375
3	Knoxville Table & Chair Co.	R.R.Co.	"	Nov. 30, 1903	D.B. 183	P. 303 11-30-03	409
4	D.A. Carpenter	"	"	Sept. 22, 1904	D.B. 191	P. 83 10-1-04	525
5	N.A. McPaul	"	"	Oct. 2, 1903	D.B. 183	P. 232 10-6-03	369
6	Lonsdale Land Co.	"	"	Nov. 24, 1903	D.B. 183	P. 294 11-24-03	408
7	J.E. Caldwell	"	"	"	"	"	"
8	For details see parcel #6	"	"	Dec. 1, 1903	D.B. 183	P. 306 12-2-03	420
9	Lonsdale Land Co.	"	"	Dec. 10, 1903	D.B. 183	P. 314 12-10-03	414
10	Knoxville Iron Co.	"	"	Oct. 2, 1905	D.B. 185	P. 128 10-7-05	394
11	Knoxville Iron Co.	"	"	Jan. 4, 1917	D.B. 295	P. 401	374(2)
12	Knoxville Iron Co.	"	"	Aug. 11, 1905	D.B. 205	P. 100 11-3-05	6270
13	For details see parcel #6	"	"	"	"	"	"
14	T.C. Lundy	L.N. R.R.Co.	Deed	Sept. 15, 1905	D.B. 205	P. 136 11-14-05	6313
15	Knoxville Iron Co.	"	Cont.	Dec. 26, 1907	D.B.	P. 265 11-27-09	9973
16	Roth Coal Co.	"	"	Nov. 9, 1909	D.B. 2	P. 268 3-16-10	16243(1)
17	Knoxville Iron Co.	"	"	Oct. 21, 1916	D.B. 199	P. 268 3-16-16	16243(1)
18	Knoxville Iron Co.	"	"	June 20, 1917	D.B.	P. 462 8-3-17	16243(2)
19	Advance possession	"	"	"	"	"	"
20	Lonsdale Mfg. Co.	"	"	July 23, 1921	"	"	1126(2)
21	Knoxville Iron Co.	"	"	Aug. 8, 1917	"	"	16243(3)
22	Knoxville Iron Co.	"	"	Nov. 20, 1904	"	"	374(4)
23	Knoxville Iron Co.	"	"	Aug. 12, 1924	"	"	17199(3)
24	Knoxville Iron Co.	"	"	Aug. 12, 1924	"	"	17199(3)
25	Knoxville Iron Co.	"	"	Aug. 12, 1924	"	"	17199(3)



L.F. NO.	CONT.	DATE COMPLETED	DESCRIPTION
3121	9204	11-26-06	Knoxville Table and Chair Co. Pipe Line x-ing (8" Water)
	19442	1-26-22	Brunswick, Balke, Collender Co. 30" x 16" Reinf. Conc. Box Sta. 88+24.8
	15069(2)	2-19-15	Southern Extract Co. Trk. #21 506' 1/2'
	14093	12-20-13	Knoxville Veneer Co. Guy with x-ing at Sta. 86+36.5
	17199(3)	8-12-24	Knox Iron Co. Trk. #12
	24740	6-10-29	City of Knoxville Permit to cross Trk. #12 with Sewer at Sta. 1193 & 540
	16243(1)	10-21-16	Knox Iron Co. Trk. Ext. 415' & Lease of rails
	16243(2)	6-20-17	Knox Iron Co. Trk. Ext. - Lease of rails
	18288	1-13-20	Knox Iron Co. 8" x 12" Culvert at Sta. 74+82.5
	21376	7-10-24	Knox Iron Co. 3" pipe line for supplying water to Bldgs.
	28829	5-12-36	City of Knoxville Sewer on part of Main St. (North Ave.)
	31159	9-28-39	Knox Iron Co. Fence 1925' wide of Trk. beg. at Sta. 63+75 to 83+34
	31596	7-12-40	Knox Iron Co. 4" Sanitary Sewer under Trk. #12
	32981	9-28-42	Knox Iron Co. 2" - 2" Iron pipes under Sta. 74+88
	33254	6-14-43	Electro Manganese Corp. Lease of Land on L. at Sta. 23+59 to 25+13.5 3-16-56 trans.
	33338	8-10-43	Knox Elec. Power & Water Co. Power line over at Sta. 36+70 & 37+98, 41+65, 42+92
	22887	7-13-26	Foreign & Domestic Veneer Co. Trk. #18A
	21973	4-7-25	Foreign & Domestic Veneer Co. Trk. #17A, 500'
	26368	12-19-31	City of Knoxville 30" Conc. pipe for storm sewer x-ing at Sta. 90+14
	22419	3-28-27	Foreign & Domestic Veneer Co. 208' x 15" Conc. pipe & 44' x 2" W.I.P. by S. Side of Trk. #17A & S. Side
	20401	4-9-23	Foreign & Domestic Veneer Co. a stiff legged derrick at Sta. 88+21.8
	14894	2-19-15	Southern Extract Co. Connecting Trk. 381' 1/2'
	12662	3-20-15	Knoxville Veneer Co. 6" C.I. Pipe x-ing at Sta. 85+77
	15970	7-15-16	Lonsdale Brick and Pottery Co. 3/4" Galv. I. Water pipe x-ing at Sta. 93+48
	18756	11-10-20	Brunswick-Balke-Collender Co. Two guy wires to support derrick Sta. 86+64.8 to 87+40.8
	26942	5-1-41	Sou. Bell Trk. Co. Wire x-ing at Sta. 90+10.5
	37232	8-7-47	Contractors Supply Co. Const. Trk. #12A 408.5' Memo. 6-25-51 - Usqr. 12-11-58 Contractors Supply
	193	12-23-46	Tennessee Concrete & Supply Co., Inc. Const. Trk. #16A, 478' 1/2'
	6855	1-28-47	Knoxville Utilities Board 12" Water main under Trks. Sta. 63+88, & 5+07.4
	38044	2-17-50	Power Line x-ing at Sta. 24+78.7
	35939	7-7-50	Electro Manganese Corp., 4" sewer encased in an 8" steel pipe at Sta. 24+57 3-16-56 trans. to Foote Mineral Co.
	24979	7-12-50	Foreign & Domestic Veneers, Inc., 4" sewer encased in a 6" pipe at Sta. 90+78
	6855	7-6-50	Knoxville Utilities Board 6" water line encased in a 10" pipe under at Sta. 25+37
	35939	6-5-52	Knoxville Utilities Board 6" water line encased in a 10" pipe under at Sta. 25+37
	40746	6-5-52	Proctor Furniture Co. 4" sewer encased in an 8" steel pipe at Sta. 24+57 3-16-56 trans. to Foote Mineral Co.

RIGHT OF WAY AND TRACK MAP
LOUISVILLE AND NASHVILLE R.R.CO.
KNOXVILLE DIVISION
THIRD CREEK SPUR
STATION 2172 TO STATION 10168
SCALE 1 INCH = 100 FT. JUNE 30, 1917
OFFICE OF CHIEF ENGINEER
LOUISVILLE, KY.

047-013

V.91
I-A1

V.91 IAI

KNOX COUNTY, TENN.

Revised & Redrawn 7-14-59 T.R.N.