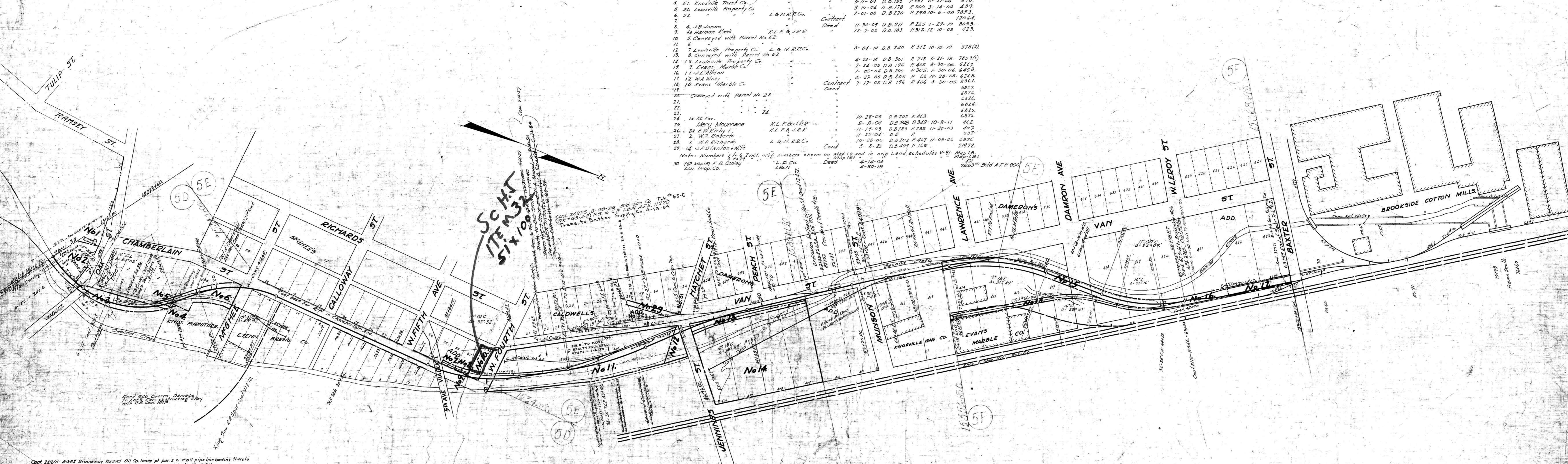


A.P.E. No.	Date Comp.	Description of Change
500	4-30-20	Sale of par. 30 as part of No. 6
11220	10-6-20	Corner of Oak St. & Chamberlain St.
30028	4-6-21	Corner of Oak St. & Chamberlain St.
48563	3-28-22	Const. of track 165-0 for Knoxville Elec. Power & Light Board.
15336	2-17-22	Ret. 16.7 x 66 and 183 B. 1152
55933	6-7-25	Ret. 16.7 x 66 and 183 B. 1152

No. Orig. No.	Grantor	Grantee	Instrument Date	Record	Cust. No.	Remarks
1	38. Louisville Prop. Co.	K.L.F. & J.R.R.	Deed	5-1-04 D.B. 178 P. 377	5-11-04 481	
2	39. Southern Ry. Co.	"	"	11-25-04 D.B. 195 P. 118	11-25-04 527	Conveys No. 3
3	49. Conveyed with Parcel No. 2.	"	"	5-11-04 D.B. 183 P. 352	6-21-04 478	
4	51. Knoxville Trust Co.	"	"	3-10-04 D.B. 178 P. 300	3-18-04 459	
5	50. Louisville Property Co.	"	"	2-01-06 D.B. 220 P. 298	10-6-08 7183	
6	52. " " " "	L. & N. R. Co.	Contract			12064
7	" " " "	"	"			423
8	4. J.B. Jones	"	Deed	11-30-09 D.B. 211 P. 265	1-29-10 8053	
9	14. Harman Kreis	K.L.F. & J.R.R.	"	12-7-03 D.B. 183 P. 312	12-10-03 423	
10	5. Conveyed with Parcel No. 52.	"	"			
11	6. " " " "	"	"			
12	7. Louisville Property Co.	L. & N. R. Co.	"	8-04-10 D.B. 240 P. 312	10-10-10 378(2)	
13	8. Conveyed with Parcel No. 52.	"	"			
14	13. Louisville Property Co.	"	"	4-20-18 D.B. 301 P. 218	5-21-18 7853(1)	
15	9. Evans Marble Co.	"	"	7-24-08 D.B. 196 P. 405	8-30-08 6247	
16	11. W.L. Wilson	"	"	1-05-06 D.B. 205 P. 305	1-30-06 6453	
17	12. W.A. Wray	"	"	6-27-05 D.B. 205 P. 66	10-28-05 6248	
18	10. Evans Marble Co.	"	Contract	7-17-05 D.B. 196 P. 406	8-30-05 8561	
19	" " " "	"	Deed			4827
20	Conveyed with Parcel No. 28.	"	"			4826
21	" " " "	"	"			4824
22	" " " "	"	"			6826
23	" " " "	"	"			6825
24	18. R.C. Fox	"	"	10-28-05 D.B. 202 P. 463		6825
25	Mary Mourne	K.L.F. & J.R.R.	"	2-8-04 D.B. 248 P. 342	10-3-11 422	
26	2a. E.W. Kirby I	K.L.F. & J.R.R.	"	11-17-03 D.B. 183 P. 285	11-20-03 427	
27	2. W.S. Eoberts	"	"	11-27-04 D.B. 208		557
28	1. W.R. Richards	L. & N. R. Co.	"	10-28-06 D.B. 202 P. 447	11-08-06 6826	
29	14. J.D. Stanton wife	"	Cont.	5-8-25 D.B. 409 P. 165		21972

No.	Grantor	Grantee	Inst. Date	Record	Cust. No.	Remarks
31	L.G. Wickham's wife	L. & N. R. Co.	Centr.	9-30-37 D.B. 571 P. 207	21972	
32	" " " "	"	"	9-30-37 D.B. 571 P. 207	21972	



- Cont. 29201 4-3-31 Broadway Wadell Oil Co. lease pt. par. 2 & 2" oil pipe line leading there to
- 29203 10-13-31 City of Knoxville sewer on N.W. S. of Oak St. 6"-12.5' long.
- 29277 10-13-31 Ten. Pub. Serv. Co. power line across ReW and trk. Just So. of Oak St. Bridge 7x10 to City of Knoxville 10-2-31
- 29202 12-28-36 Abe Zwick, sign erect. N.W. corner of par. 6
- 27972 9-30-37 L. & Wickham's wife lease of rails & appurtenances for 14.65B, acquire Par. 2918, 32
- 24792 8-14-27 L. & Wickham's Trk. 65B shifted 6' E. of 50' 3'-3-99 Trans. to Knoxville J. & Co. (Users Agr. Mrs. J. C. Folger 3-14-49) (Users Agr. Sunshine Biscuit Co. 3-14-49)
- 30223 5-20-34 Southern Dairies, erect on west line of par. 3 beyond trk. 314
- 3194 4-3-40 Southern Dairies, 12' roadway & private ways of 229, 216
- 32404 4-3-40 Southern Dairies, 12' roadway & private ways of 229, 216
- 34778 4-29-25 Knoxville Elec. Power & Light Board, Const. of Trk. 65-D, 65-E, 65-F, 65-G, 65-H, 65-I, 65-J, 65-K, 65-L, 65-M, 65-N, 65-O, 65-P, 65-Q, 65-R, 65-S, 65-T, 65-U, 65-V, 65-W, 65-X, 65-Y, 65-Z, 65-AA, 65-AB, 65-AC, 65-AD, 65-AE, 65-AF, 65-AG, 65-AH, 65-AI, 65-AJ, 65-AL, 65-AM, 65-AN, 65-AO, 65-AP, 65-AQ, 65-AR, 65-AS, 65-AT, 65-AU, 65-AV, 65-AW, 65-AX, 65-AY, 65-AZ, 65-BA, 65-BB, 65-BC, 65-BD, 65-BE, 65-BF, 65-BG, 65-BH, 65-BI, 65-BJ, 65-BL, 65-BM, 65-BN, 65-BO, 65-BP, 65-BQ, 65-BR, 65-BS, 65-BT, 65-BU, 65-BV, 65-BW, 65-BX, 65-BY, 65-BZ, 65-CA, 65-CB, 65-CC, 65-CD, 65-CE, 65-CF, 65-CG, 65-CH, 65-CI, 65-CJ, 65-CL, 65-CM, 65-CN, 65-CO, 65-CP, 65-CQ, 65-CR, 65-CS, 65-CT, 65-CU, 65-CV, 65-CW, 65-CX, 65-CY, 65-CZ, 65-DA, 65-DB, 65-DC, 65-DD, 65-DE, 65-DF, 65-DG, 65-DH, 65-DI, 65-DJ, 65-DM, 65-DN, 65-DO, 65-DP, 65-DQ, 65-DR, 65-DS, 65-DT, 65-DU, 65-DV, 65-DW, 65-DX, 65-DY, 65-DZ, 65-EA, 65-EB, 65-EC, 65-ED, 65-EE, 65-EF, 65-EG, 65-EH, 65-EI, 65-EJ, 65-EL, 65-EM, 65-EN, 65-EO, 65-EP, 65-EQ, 65-ER, 65-ES, 65-ET, 65-EU, 65-EV, 65-EW, 65-EX, 65-EY, 65-EZ, 65-FA, 65-FB, 65-FC, 65-FD, 65-FE, 65-FG, 65-FH, 65-FI, 65-FJ, 65-FL, 65-FM, 65-FN, 65-FO, 65-FP, 65-FQ, 65-FR, 65-FS, 65-FT, 65-FU, 65-FV, 65-FW, 65-FX, 65-FY, 65-FZ, 65-GA, 65-GB, 65-GC, 65-GD, 65-GE, 65-GF, 65-GG, 65-GH, 65-GI, 65-GJ, 65-GL, 65-GM, 65-GN, 65-GO, 65-GP, 65-GQ, 65-GR, 65-GS, 65-GT, 65-GU, 65-GV, 65-GW, 65-GX, 65-GY, 65-GZ, 65-HA, 65-HB, 65-HC, 65-HD, 65-HE, 65-HF, 65-HG, 65-HH, 65-HI, 65-HJ, 65-HL, 65-HM, 65-HN, 65-HO, 65-HP, 65-HQ, 65-HR, 65-HS, 65-HT, 65-HU, 65-HV, 65-HW, 65-HX, 65-HY, 65-HZ, 65-IA, 65-IB, 65-IC, 65-ID, 65-IE, 65-IF, 65-IG, 65-IH, 65-II, 65-IL, 65-IM, 65-IN, 65-IO, 65-IP, 65-IQ, 65-IR, 65-IS, 65-IT, 65-IU, 65-IV, 65-IW, 65-IX, 65-IY, 65-IZ, 65-JA, 65-JB, 65-JC, 65-JD, 65-JE, 65-JF, 65-JG, 65-JH, 65-JI, 65-JL, 65-JM, 65-JN, 65-JO, 65-JP, 65-JQ, 65-JR, 65-JS, 65-JT, 65-JU, 65-JV, 65-JW, 65-JX, 65-JY, 65-JZ, 65-KA, 65-KB, 65-KC, 65-KD, 65-KE, 65-KF, 65-KG, 65-KH, 65-KI, 65-KL, 65-KM, 65-KN, 65-KO, 65-KP, 65-KQ, 65-KR, 65-KS, 65-KT, 65-KU, 65-KV, 65-KW, 65-KX, 65-KY, 65-KZ, 65-LA, 65-LB, 65-LC, 65-LD, 65-LE, 65-LF, 65-LG, 65-LH, 65-LI, 65-LJ, 65-LK, 65-LM, 65-LN, 65-LO, 65-LP, 65-LQ, 65-LR, 65-LS, 65-LT, 65-LU, 65-LV, 65-LW, 65-LX, 65-LY, 65-LZ, 65-MA, 65-MB, 65-MC, 65-MD, 65-ME, 65-MF, 65-MG, 65-MH, 65-MI, 65-MJ, 65-ML, 65-MN, 65-MO, 65-MP, 65-MQ, 65-MR, 65-MS, 65-MT, 65-MU, 65-MV, 65-MW, 65-MX, 65-MY, 65-MZ, 65-NA, 65-NB, 65-NC, 65-ND, 65-NE, 65-NF, 65-NG, 65-NH, 65-NI, 65-NJ, 65-NK, 65-NL, 65-NO, 65-NP, 65-NQ, 65-NR, 65-NS, 65-NT, 65-NU, 65-NV, 65-NW, 65-NX, 65-NY, 65-NZ, 65-OA, 65-OB, 65-OC, 65-OD, 65-OE, 65-OF, 65-OG, 65-OH, 65-OI, 65-OJ, 65-OK, 65-OL, 65-OM, 65-ON, 65-OO, 65-OP, 65-OQ, 65-OR, 65-OS, 65-OT, 65-OU, 65-OV, 65-OW, 65-OX, 65-OY, 65-OZ, 65-PA, 65-PB, 65-PC, 65-PD, 65-PE, 65-PF, 65-PG, 65-PH, 65-PI, 65-PJ, 65-PL, 65-PM, 65-PN, 65-PO, 65-PP, 65-PQ, 65-PR, 65-PS, 65-PT, 65-PU, 65-PV, 65-PW, 65-PX, 65-PY, 65-PZ, 65-QA, 65-QB, 65-QC, 65-QD, 65-QE, 65-QF, 65-QG, 65-QH, 65-QI, 65-QJ, 65-QL, 65-QM, 65-QN, 65-QO, 65-QP, 65-QQ, 65-QR, 65-QS, 65-QT, 65-QU, 65-QV, 65-QW, 65-QX, 65-QY, 65-QZ, 65-RA, 65-RB, 65-RC, 65-RD, 65-RE, 65-RF, 65-RG, 65-RH, 65-RI, 65-RJ, 65-RL, 65-RM, 65-RN, 65-RO, 65-RP, 65-RQ, 65-RR, 65-RS, 65-RT, 65-RU, 65-RV, 65-RW, 65-RX, 65-RY, 65-RZ, 65-SA, 65-SB, 65-SC, 65-SD, 65-SE, 65-SF, 65-SG, 65-SH, 65-SI, 65-SJ, 65-SL, 65-SM, 65-SN, 65-SO, 65-SP, 65-SQ, 65-SR, 65-SS, 65-ST, 65-SU, 65-SV, 65-SW, 65-SX, 65-SY, 65-SZ, 65-TA, 65-TB, 65-TC, 65-TD, 65-TE, 65-TF, 65-TG, 65-TH, 65-TI, 65-TJ, 65-TL, 65-TM, 65-TN, 65-TO, 65-TP, 65-TQ, 65-TR, 65-TS, 65-TT, 65-TU, 65-TV, 65-TW, 65-TX, 65-TY, 65-TZ, 65-UA, 65-UB, 65-UC, 65-UD, 65-UE, 65-UF, 65-UG, 65-UH, 65-UI, 65-UJ, 65-UL, 65-UM, 65-UN, 65-UO, 65-UP, 65-UQ, 65-UR, 65-US, 65-UT, 65-UY, 65-UZ, 65-VA, 65-VB, 65-VC, 65-VD, 65-VE, 65-VF, 65-VG, 65-VH, 65-VI, 65-VJ, 65-VL, 65-VM, 65-VN, 65-VO, 65-VP, 65-VQ, 65-VR, 65-VS, 65-VT, 65-VU, 65-VV, 65-VW, 65-VX, 65-VY, 65-VZ, 65-WA, 65-WB, 65-WC, 65-WD, 65-WE, 65-WF, 65-WG, 65-WH, 65-WI, 65-WJ, 65-WL, 65-WM, 65-WN, 65-WO, 65-WP, 65-WQ, 65-WR, 65-WS, 65-WT, 65-WU, 65-WV, 65-WX, 65-WY, 65-WZ, 65-XA, 65-XB, 65-XC, 65-XD, 65-XE, 65-XF, 65-XG, 65-XH, 65-XI, 65-XJ, 65-XL, 65-XM, 65-XN, 65-XO, 65-XP, 65-XQ, 65-XR, 65-XS, 65-XT, 65-XU, 65-XV, 65-XW, 65-XX, 65-XY, 65-XZ, 65-YA, 65-YB, 65-YC, 65-YD, 65-YE, 65-YF, 65-YG, 65-YH, 65-YI, 65-YJ, 65-YL, 65-YM, 65-YN, 65-YO, 65-YP, 65-YQ, 65-YR, 65-YS, 65-YT, 65-YU, 65-YV, 65-YW, 65-YX, 65-YZ, 65-ZA, 65-ZB, 65-ZC, 65-ZD, 65-ZE, 65-ZF, 65-ZG, 65-ZH, 65-ZI, 65-ZJ, 65-ZL, 65-ZM, 65-ZN, 65-ZO, 65-ZP, 65-ZQ, 65-ZR, 65-ZS, 65-ZT, 65-ZU, 65-ZV, 65-ZW, 65-ZX, 65-ZY, 65-ZZ

Note: The owners of the lots of which the following parcels are a part, (No. 20, 21, 22, 23, 24, 25, 26, 27, 28) give up their right & title in & to the fee in Chamberlain Ave.

RIGHT OF WAY AND TRACK MAP
LOUISVILLE AND NASHVILLE R.R. CO.
KNOXVILLE DIVISION.
SECOND CREEK SPUR.

STATION 15323+60 TO STATION 15368+89
SCALE 1" = 100 FT. JUNE 12, 1926

047.018

V91
3.6