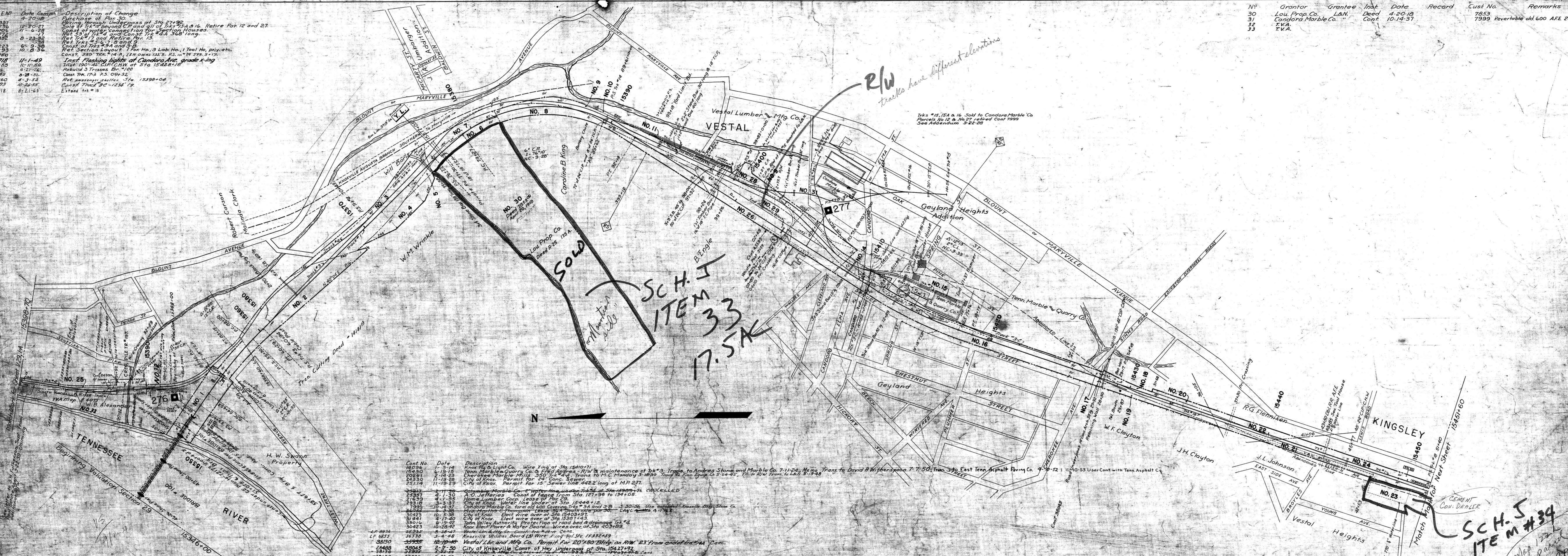


A.F.E. No.	Date	Description of Change
8337	4-20-18	Purchase of For 30
10736	12-20-27	Change through Underpass at Sta. 274+92
14416	11-6-28	Sale of Trks 7, 8 and 9 of Trks 7, 8, 9, 10, 11, 12, 13, 14, 15, 16, 17, 18, 19, 20, 21, 22, 23, 24, 25, 26, 27, 28, 29, 30, 31, 32, 33, 34, 35, 36, 37, 38, 39, 40, 41, 42, 43, 44, 45, 46, 47, 48, 49, 50, 51, 52, 53, 54, 55, 56, 57, 58, 59, 60, 61, 62, 63, 64, 65, 66, 67, 68, 69, 70, 71, 72, 73, 74, 75, 76, 77, 78, 79, 80, 81, 82, 83, 84, 85, 86, 87, 88, 89, 90, 91, 92, 93, 94, 95, 96, 97, 98, 99, 100
16362	8-23-28	Const. of Trks 7, 8 and 9
23223	6-9-30	Const. of Trks 7, 8 and 9
27153	10-2-30	Const. of Trks 7, 8 and 9
36750	11-1-49	Inst. Flashing lights at Candora Ave. grade x-ing
38718	11-1-50	Inst. 180' x 24' CURB at Sta. 15448+10
39325	4-21-24	Rebuild 3 Trusses Br. 100
6306	8-28-51	Const. 7th, 17th P.S. 05+32
39449	4-3-52	Ret. passenger shelter, Sta. 15398+04
42260	8-24-52	Const. Track 9 - 1234' 19"
44123	8-21-63	Extend trk #18

No.	Grantor	Grantee	Last Deed Cont.	Date	Record	Cust. No.	Remarks
30	Lou. Prop. Co.	L.N.		4-20-18		7853	
31	Candora Marble Co.	"		10-14-37		7999	Revertable old 600 AFE 23223.
32	T.V.A.						
33	T.V.A.						



Cont. No.	Date	Description
10236	4-1-14	Knox Tel. & Light Co. Wire xing at Sta. 15410+71
15430	6-13-15	Tenn. Marble Quarry Co. & Fred Adges - R/W & maintenance of Trk #3, Traps to Adges Stone and Marble Co. 7-11-24; Memo. Trans. to David A Witherspoon 7-7-50; Trans. to East Tenn. Asphalt Paving Co. 9-28-52; 11-10-53 User Cont. with Tenn. Asphalt Co.
20361	2-18-23	Shelby Marble Quarry Co. 320' Trk. Trans. to M.C. Manday 3-10-30; Trans. to One Group Co. 5-24-32; R/W from L.L. 3-2-28
24330	11-19-28	City of Knoxville. Permit for 24' Conc. Sewer
25174	11-19-29	City of Knoxville. Permit for 15' Sewer line 422' long of M.P. 277
30423	10-3-38	City of Knoxville. Const. of 18' sewer line from Sta. 121+95 to 134+05
29327	9-11-30	Home Lumber Co. Lease of For 29
21639	4-1-35	City of Knoxville. Const. of 18' sewer line from Sta. 15444+12
24316	3-3-37	Candora Marble Co. form old 600 covering Trks # 3A and 3B 3-30-36. Use extended Knoxville City Streets Co.
7999	10-14-37	City of Knoxville. Const. of 18' sewer line from Sta. 15444+12
30423	10-3-38	City of Knoxville. Const. of 18' sewer line from Sta. 15444+12
31441	2-17-40	City of Knoxville. Const. of 18' sewer line from Sta. 1539+37
31016	6-13-42	Tenn. Valley Authority. Protection of road bed & drainage Trk #4
30423	10-28-42	Knox Elect. Power & Water Board. Wires over at Sta. 403+89
26386	2-28-47	Knoxville Utilities Board (3) Wire xing Vol. Sta. 15392+59
36338	3-4-48	Knoxville Utilities Board (3) Wire xing Vol. Sta. 15392+59
38130	3-22-48	Vestal Lbr. & Mfg. Co. Permit for 20' x 180' Blot on R/W #23 from end of Trk #44 Cont.
25488	2-17-50	City of Knoxville. Const. of Hwy underpass at Sta. 15427+92
38136	2-28-50	Vestal Lbr. & Mfg. Co. Const. of 24' x 36' Sta. 10153. User Deas & Co., Inc. 12-31-66
30130	3-22-50	Vestal Lbr. & Mfg. Co. Const. of 24' x 36' Sta. 10153. User Deas & Co., Inc. 12-31-66
12805	7-7-50	Candora Marble Co. & Vestal Lbr. & Mfg. Co. Users Agreement
33421	9-24-50	Home Lumber Co. Const. of 12' x 12' Land - R/W 5-15-67
8074	2-24-50	Vestal Lbr. & Mfg. Co. 200' x 120' Trk #11 - 11-1-51
27951	1-11-51	Finn Equipment Co. 3/4 copper water pipe under at Sta. 15389+07
33158	5-7-52	Home Lumber Co. Const. of 12' x 12' Land - R/W 5-15-67
21126	11-28-54	Part of Underpass - Const. of 24' x 36' Sta. 10153. User Deas & Co., Inc. 12-31-66
42516	11-14-55	City of Knoxville. Const. of 18' sewer line from Sta. 15410+71
48137	11-14-55	City of Knoxville. Const. of 18' sewer line from Sta. 15410+71
35489	8-10-49	Home Lumber Co. Const. of 12' x 12' Land - R/W 5-15-67
22191	12-4-59	David Witherspoon, Inc. Lease of 2.54 acre land between Sta. 15410+71 and 15412+29
41323	7-14-63	Perm. to Use Cement - 18' x 500' Trk #18

RIGHT OF WAY AND TRACK MAP
LOUISVILLE AND NASHVILLE R.R. CO.
KNOXVILLE DIVISION
STATION 15346+00 TO STATION 15451+60
SCALE 1 INCH = 200 FT. JUNE 30, 1917
OFFICE OF CHIEF ENGINEER
KNOXVILLE, TENN.