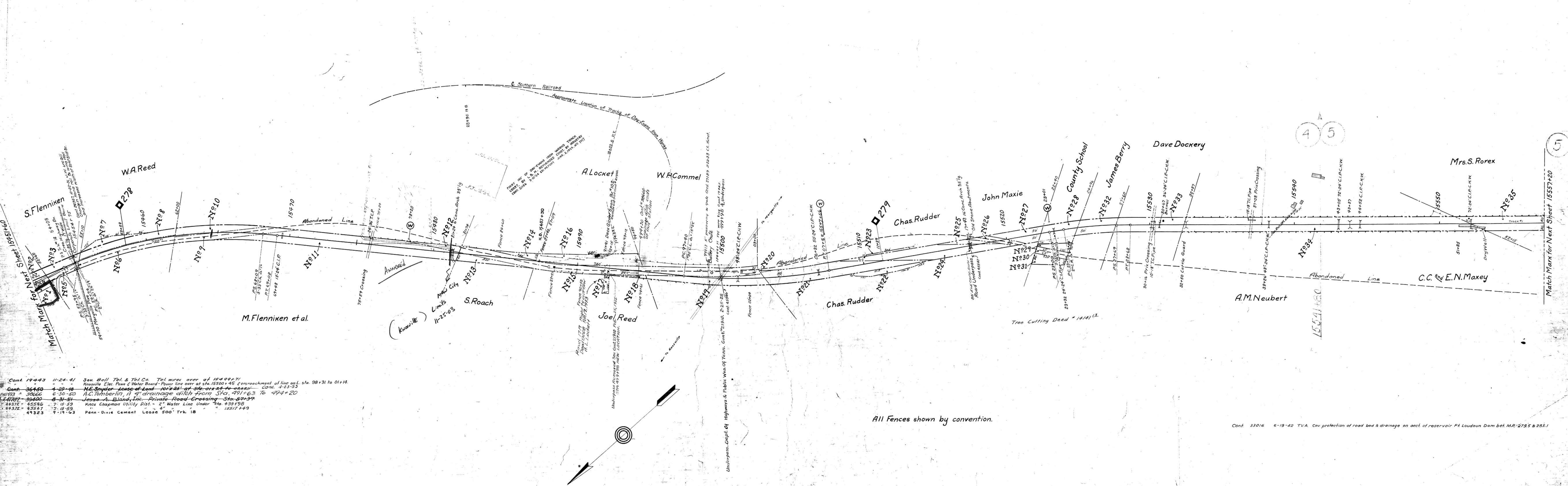


ARE No.	Date	Comp.	Description of Change
5425	14-17-24	Turnout	(100') of Trk. 33a, 15487+00 Const. by L&N
6340	9-10-25	Const. of road	Const. of road under pass Sta. 15499+43
12921	3-2-24	Const. of 4' x 4' conc. culv.	85' long thru under pass Sta. 15517+43
12910	3-12-26	Rel. of hk. 12A	
33445	10-3-45	Spring switch	inst. PS Trk. 19 at Sta. 15552+33
42157	6-2-52	Reline Trk. 19	3000' long
55418	8-21-63	Extend Trk. 18	



Cont. 19443	11-24-41	San. Bell Tel. & Tel. Co.	Tel. wires over at 15499+71
Cont. 36450	4-20-48	Knoxville Elec. Power & Water Board	Power line over at Sta. 15500+45, encroachment of line on L. Sta. 98+31 to 01+14
Cont. 38666	6-30-50	H.E. Snyder	Lease of Land 101x25' at Sta. 15517+43
Cont. 39460	8-31-51	A.C. Tomberlin	1/4 drainage ditch from Sta. 491+63 to 494+20
Cont. 41372	4-25-56	Jesse A. Bland, Inc.	Private Road Crossing Sta. 51+37
Cont. 41372	4-25-56	Knox Chapman Utility Dist.	2" Water Line Under Sta. 439+93
Cont. 41372	4-25-56		
Cont. 41323	7-14-63	Penn. Div. Cement	Load 500' Trk. 18

All Fences shown by convention.

Cont. 33016 6-19-42 T.V.A. Cov. protection of road bed & drainage on acct. of reservoir Ft. Loudoun Dam bet. M.R. 2795 & 283.1

RIGHT OF WAY AND TRACK MAP
 LOUISVILLE AND NASHVILLE R. R. CO.
 KNOXVILLE DIVISION
 STATION 15451+60 TO STATION 15557+20
 SCALE: 1 INCH = 200 FT. JUNE 30 1917.

SHEET NO. 2 OF 71 OF KNOXVILLE DIVISION FROM SURVEY STATION 15451+60 TO SURVEY STATION 15557+20

OFFICE OF CHIEF ENGINEER, KNOXVILLE, TENN.

H. C. Williams
 VALUATION ENGINEER

KNOX CO. TENN.

047-021

V-29
 2
 5-2