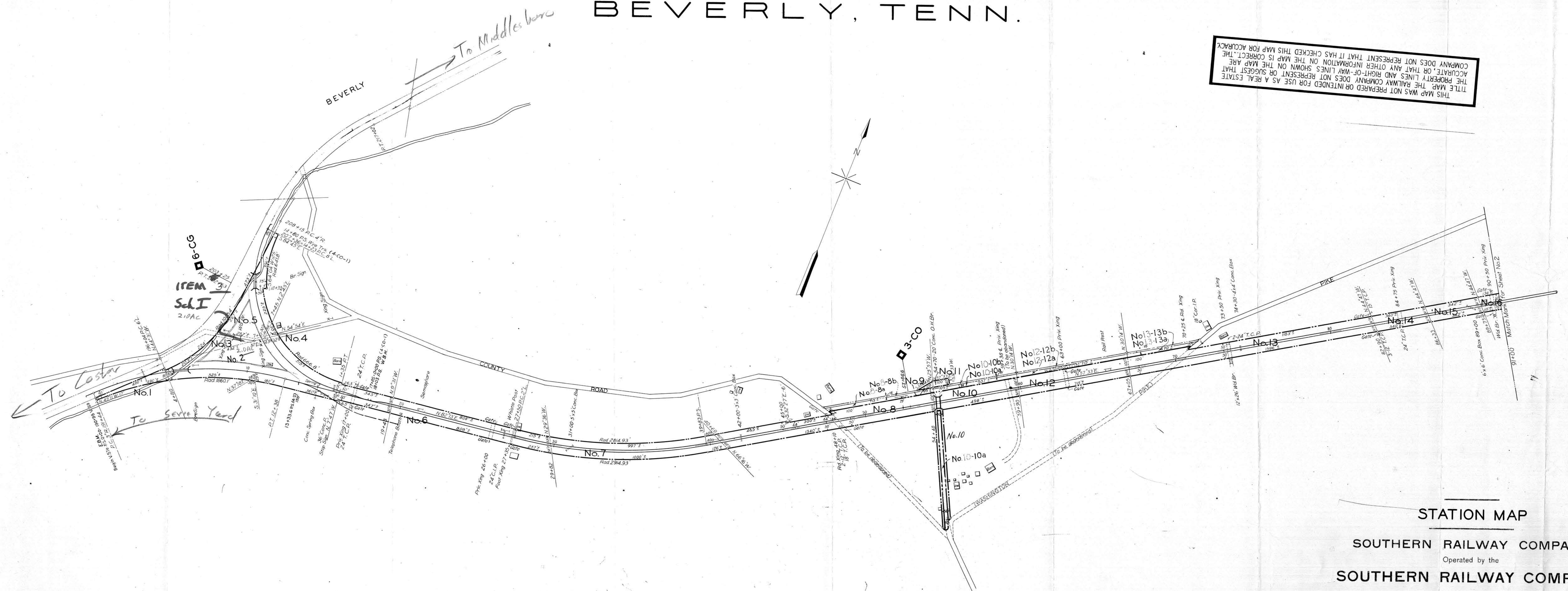
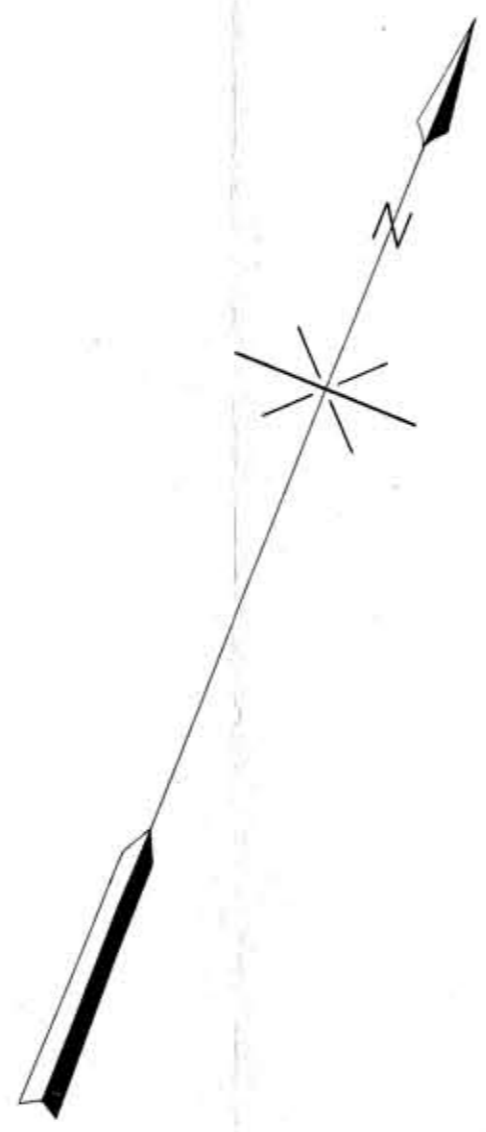


KNOX COUNTY, TENN.,

BEVERLY, TENN.

THIS MAP WAS NOT PREPARED OR INTENDED FOR USE AS A REAL ESTATE TITLE MAP. THE RAILWAY COMPANY DOES NOT REPRESENT OR SUGGEST THAT THE PROPERTY LINES AND RIGHT-OF-WAY LINES SHOWN ON THE MAP ARE ACCURATE, OR THAT ANY OTHER INFORMATION ON THE MAP IS CORRECT. THE COMPANY DOES NOT REPRESENT THAT IT HAS CHECKED THIS MAP FOR ACCURACY.



STATION MAP

SOUTHERN RAILWAY COMPANY

Operated by the

SOUTHERN RAILWAY COMPANY

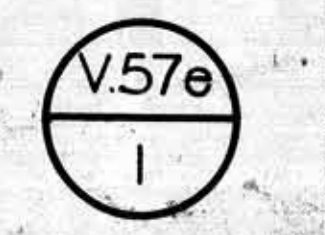
COSTER DIVISION

STATION 0+00 TO STATION 91+00
SCALE: 1 IN. = 200 FT. DECEMBER 31, 1927

Office of Special Engineer
Washington, D. C.

STATIONING REFERS TO SOUTHERN RY CHAINING

047-080



Tracks corrected to Dec 31, 1927