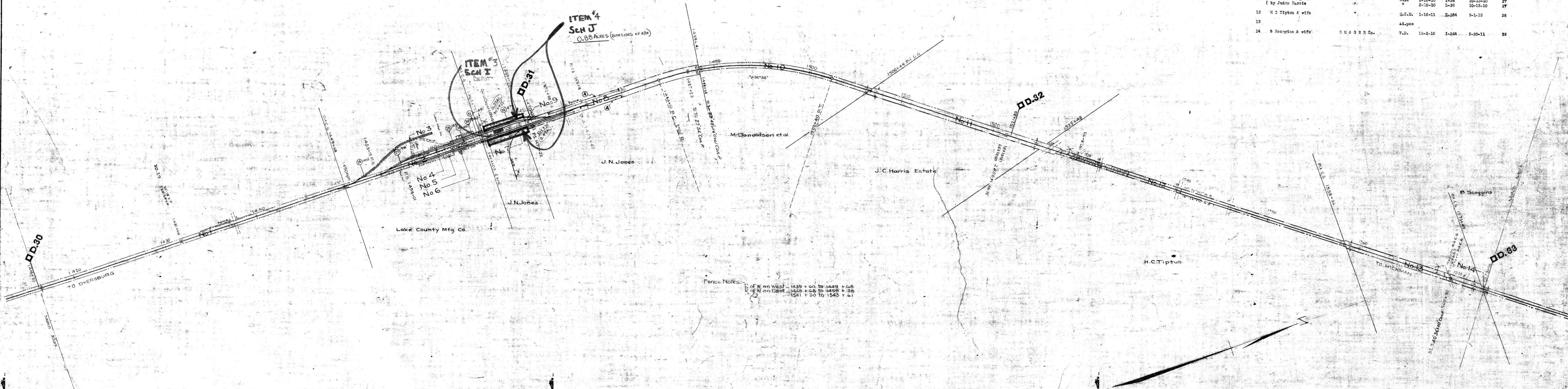


TIPTONVILLE, TENN.



Perce Notes:
 1 of W on West - 1439 + 60 to 1449 + 68
 2 of W on East - 1449 + 68 to 1459 + 38
 1541 + 30 to 1545 + 61

No.	Grantor	Grantee	Instr. Date	Record	Cont. No.	Remarks
1						
2	Lake County Mfg. Co.	D. N. R. Co.	W.D. 1-1-08	K-286	9-1-18	24
3			Ad. pos.			
4			"			
5			"			
6			"			
7	(J.N. Jones)	D. N. R. Co.	WD(SAS) 7-25-07	H-64	8-8-07	25
8	"	C. M. & G. R. R. Co.	Agmt. 3-1-10			39
9			Ad. pos.			
10	M. Donaldson, et al	C. M. & G. R. R. Co.	W.D. 2-4-11	K-286	9-1-15	26
11	(Estate J.C. Harris by Judge Harris)	"	W.D. 2-10-10	L-36	10-12-10	27
		"	2-10-10	L-36	10-12-10	27
12	H.C. Tipton & wife	"	Q.C.D. 1-18-11	K-284	9-1-15	28
13			Ad. pos.			
14	B. Scoggins & wife	C. M. & G. R. R. Co.	W.D. 12-2-10	I-264	5-20-11	29

INDEX	WORK	DESCRIPTION	DATE COMPLETED
1	20	CONSTR. SUPERVISOR REPORTS	DEC. 1914
2	20	CONSTR. SUPERVISOR REPORTS	DEC. 1914
3	20	CONSTR. SUPERVISOR REPORTS	DEC. 1914
4	20	CONSTR. SUPERVISOR REPORTS	DEC. 1914
5	20	CONSTR. SUPERVISOR REPORTS	DEC. 1914
6	20	CONSTR. SUPERVISOR REPORTS	DEC. 1914
7	20	CONSTR. SUPERVISOR REPORTS	DEC. 1914
8	20	CONSTR. SUPERVISOR REPORTS	DEC. 1914
9	20	CONSTR. SUPERVISOR REPORTS	DEC. 1914
10	20	CONSTR. SUPERVISOR REPORTS	DEC. 1914
11	20	CONSTR. SUPERVISOR REPORTS	DEC. 1914
12	20	CONSTR. SUPERVISOR REPORTS	DEC. 1914
13	20	CONSTR. SUPERVISOR REPORTS	DEC. 1914
14	20	CONSTR. SUPERVISOR REPORTS	DEC. 1914
15	20	CONSTR. SUPERVISOR REPORTS	DEC. 1914
16	20	CONSTR. SUPERVISOR REPORTS	DEC. 1914
17	20	CONSTR. SUPERVISOR REPORTS	DEC. 1914
18	20	CONSTR. SUPERVISOR REPORTS	DEC. 1914
19	20	CONSTR. SUPERVISOR REPORTS	DEC. 1914
20	20	CONSTR. SUPERVISOR REPORTS	DEC. 1914

ILLINOIS CENTRAL RAILROAD COMPANY'S PROPERTY ON THIS SHEET IS OWNED BY C.M. & G. R.R. CO. (6-23-05)

Sheet No. 10 of 13 of valuation section E-Tenn. C.M. & G. Jct. to Ky-Tenn. State line of the Illinois Central Railroad Company, from survey station 1416+30 to survey station 1572+68.

J.M. Jones
 Valuation Engineer

RIGHT-OF-WAY AND TRACK MAP
 CHICAGO, MEMPHIS, & GULF R.R.
 OPERATED BY THE
 ILLINOIS CENTRAL RAILROAD
 C.M. & G. JCT. TO KY-TENN. STATE LINE
 STATION 1416+30 TO STATION 1572+68
 M. P. D-30 TO M. P. D-33
 SCALE: 1 IN. = 500 FT.
 JUNE 30 1915
 REV. DEC. 31 1927
 OFFICE OF CHIEF ENGINEER
 CHICAGO, ILL.

048-005